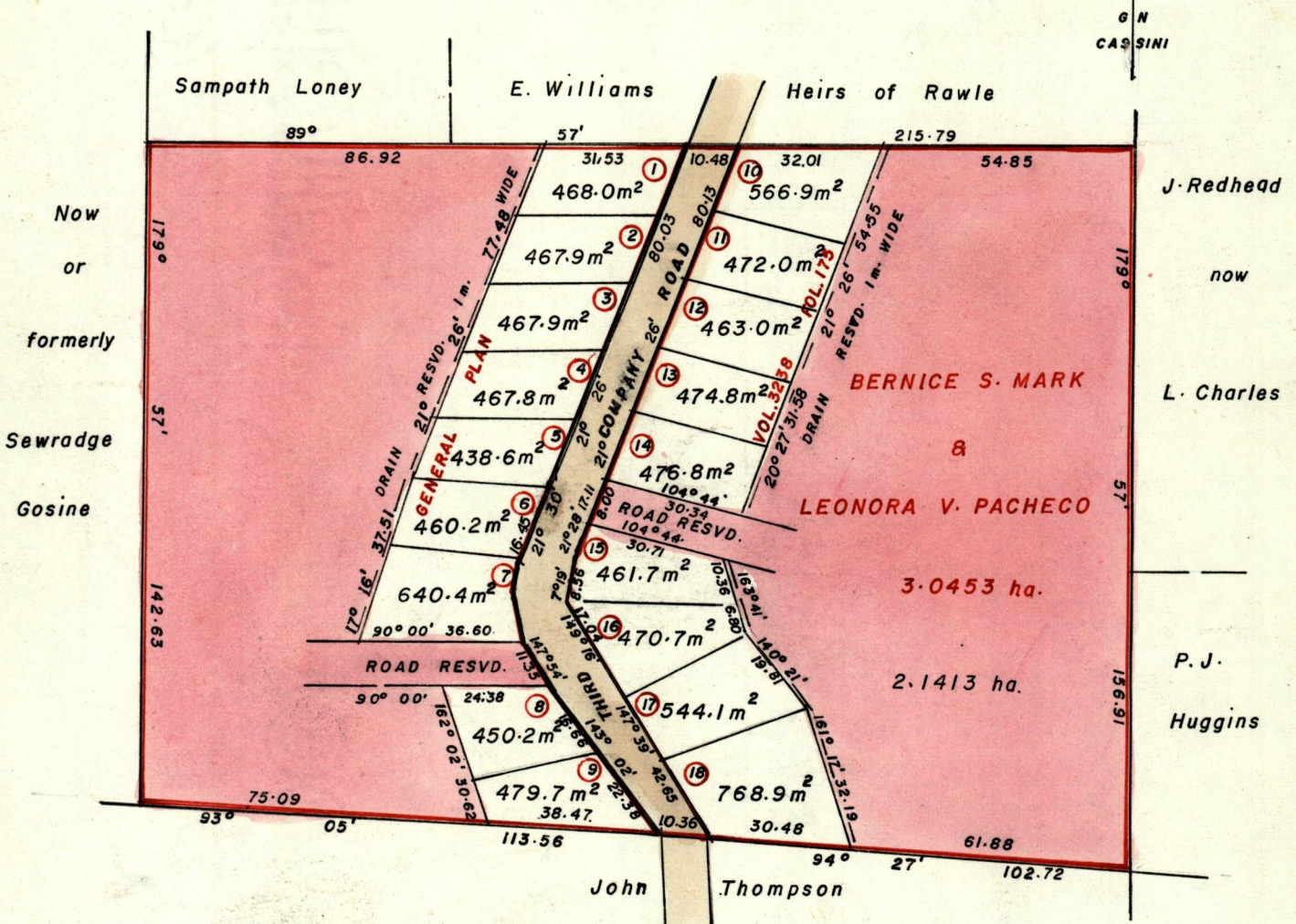


REMAINING PORTION

R.P.O. Vol. Fol. 1145
C. of T. Vol. 2761 Vol. 17

Cadastral Sheet G10A 54A 3/d
Ward of Savana Grande
County of Victoria

474



See back for information.

Approved

Francis Charles
Director of Surveys
95.03.27

SCALE 1/1500

Note: To obtain compass bearings ~~subtract~~ add 3 minutes.

Distances are in metres

This is a true copy of a diagram of three point zero four five three hectares originally granted to **BERNICE SUSANNA MARK & LEONORA VALESKA PACHECO**, shewing a portion coloured pink and containing two point one four one three hectares being the remainder after **EIGHTEEN** previous transfers of another portions of the land. the dividing lines having been run in conformity with Rule 76 under Sec. 14(2)(d) of the Land Surveyors Ordinance 1952 and duly certified by the Director of Surveys.

Checked by *Abel M. Marks*

Entered on

Andrew Bond
Land Surveyor, Trinidad, 6th February 1925.

LANDS AND SURVEYS VAULT RECORDS

| LOT | VOLUME | FOLIO |
|-----|--------|-------|
| 1 | 3238 | 223 |
| 2 | " | 225 |
| 3 | " | 227 |
| 4 | " | 229 |
| 5 | " | 231 |
| 6 | " | 233 |
| 7 | " | 235 |
| 8 | " | 237 |
| 9 | " | 239 |
| 10 | " | 241 |
| 11 | " | 243 |
| 12 | " | 245 |
| 13 | " | 247 |
| 14 | " | 249 |
| 15 | " | 251 |
| 16 | " | 253 |
| 17 | " | 255 |
| 18 | " | 257 |
| | | |