

No 9619

1145

398

R.P.O. Vol. 122
C.T. Vol.

Fol. 415.
Fol.

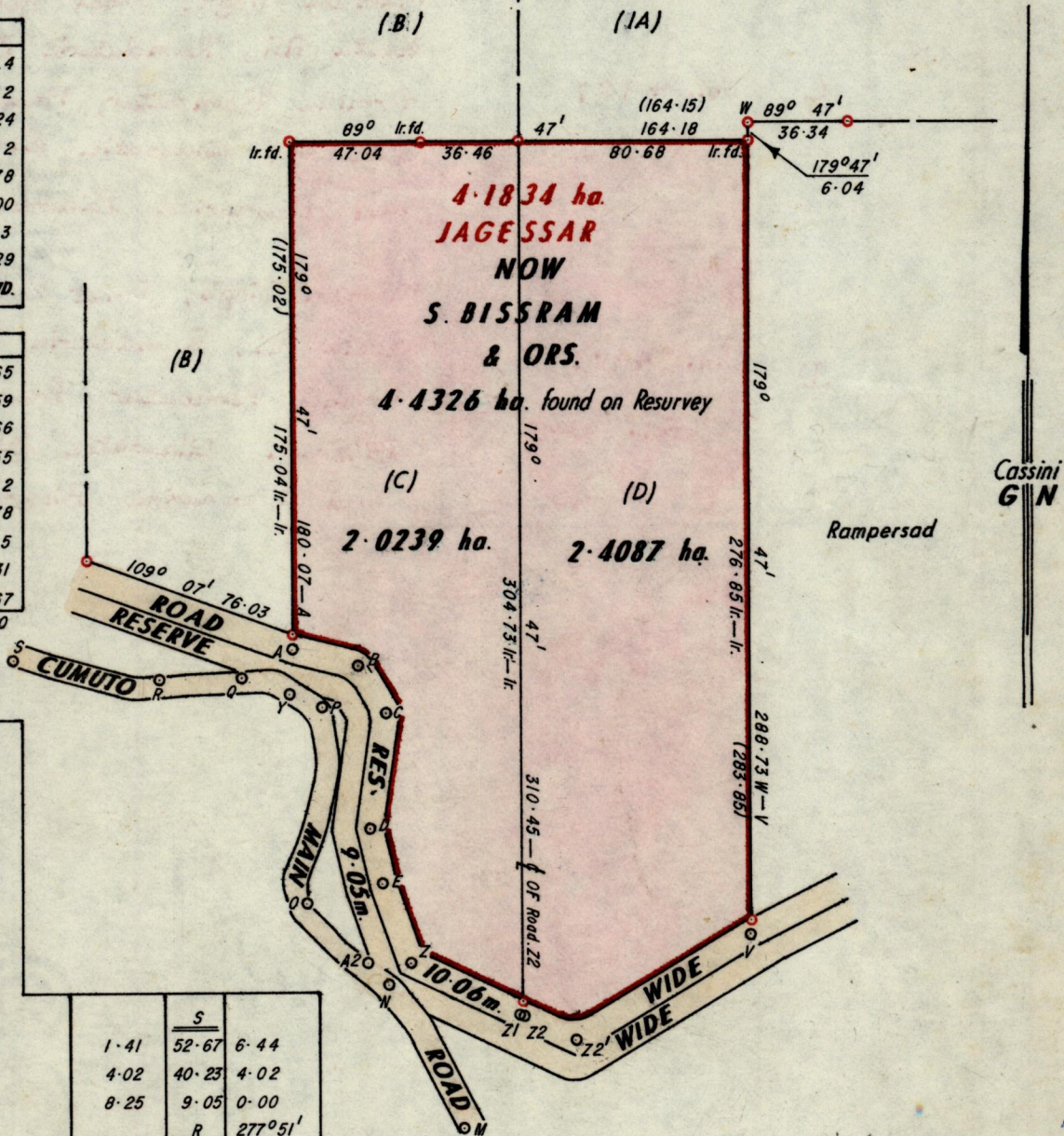
Ward of Tamana.
County of St. Andrew.
Cadastral Sheet E. I. N. $\frac{35B}{1/d}$

LEGEND			
A. — B.	1.04° 45'	24.14	
B — C	144° 35'	20.12	
C — D	188° 45'	40.24	
D — E	167° 20'	20.12	
E — Z	159° 41'	29.78	
Z — Z1	116° 30'	43.00	
Z1 — Z2	118° 15'	22.13	
Z2 — V	59° 11'	73.29	
OF ROAD RES. 10.06m. WD.			

LEGEND			
A2 — Z	90° 47'	14.65	
M — N	332° 14'	58.59	
N — A2	315° 14'	10.66	
A2 — O	315° 14'	31.55	
O — P	04° 47'	70.12	
P — Y	289° 53'	13.78	
Y — Q	289° 53'	18.15	
Q — R	248° 21'	29.31	
R — S	277° 51'	52.67	
Z1 — Z2	118° 15'	2.10	

CUMUTO MAIN ROAD	Q	
	4.83	31.93
4.22	28.16	4.22
1.21	20.12	7.85
	13.78	= Y
4.02	7.04	4.43
	P	289° 53'
6.04	70.11	2.62
4.22	65.98	4.22
0.00	50.29	8.25
1.61	40.23	6.64
4.22	25.35	4.22
10.26	8.05	0.00
	O	04° 47'
7.24	42.21	1.81
7.24	20.12	
	10.66	= A2
5.43	N	315° 14' (4.43)

S		
1.41	52.67	6.44
4.02	40.23	4.02
8.25	9.05	0.00
R		
6.64	29.31	1.81
6.24	20.12	1.81
Q		
		248° 21'



Approved

James Charles

Director of Surveys
9.01.14

○ Denotes Iron put except otherwise stated.
Note: To obtain compass bearings add/ 13 minutes

SCALE 1:2500.

Distances are in metres.

PLAN of 2 Parcels of land coloured pink in the Ward of Tamana.
Containing together four point four three. two six hectares.
Surveyed by me, with due authority, in September 1989.

I certify that I have complied with rule 76 under section 14(2)(d) of the Land Surveyors' Ordinance 1952, and that this plan is correct.

Checked by *GRanchab* 11/1/91

Winkan Ramaran

Entered

Land Surveyor, Trinidad 10th October 1989.

Original Survey BK 16 Fol. 52

Lot No.	C.T. & Vol.	NAME
C	Vol. 4987 Fol. 255	Mathura Singh, Janet Sookdeo, Geeta Ali, Ramdularie Bissram, Armillia Ramoutar, Preamanand Bissram, Lilawatie Sinanan and Deonarine Bissram
D	Vol. 4987 Fol. 245	Mathura Singh, Janet Sookdeo, Geeta Ali, Ramdularie Bissram, Armillia Ramoutar, Preamanand Bissram, Lilawatie Sinanan and Deonarine Bissram.