

No 9878

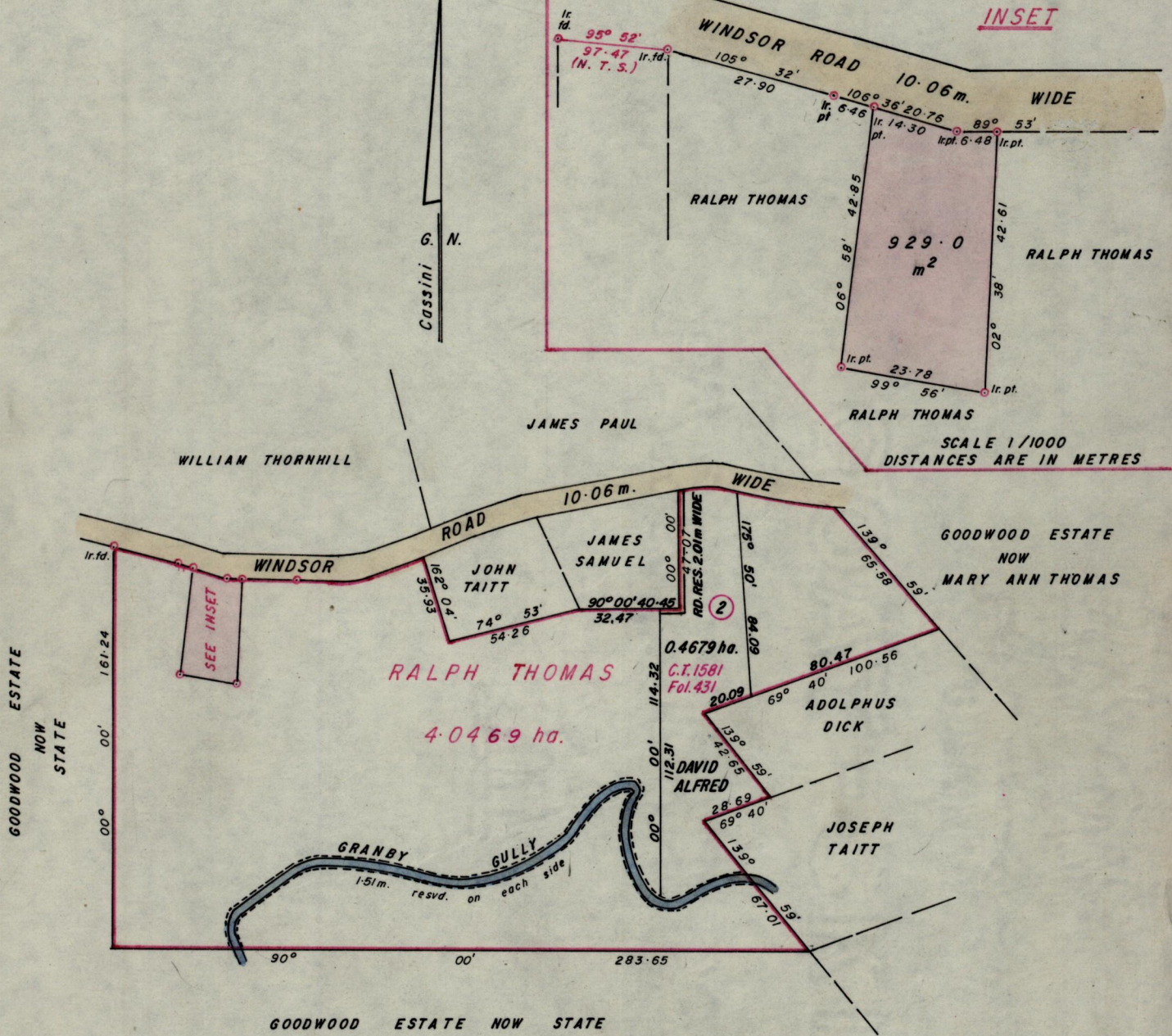
1145

383

R.P.O. Vol. 654
C.T. Vol.

Fol. 627
Fol.

Ward of Tobago
Parish of St. Mary
Cadastral Sheet 1.19.E



Approved

Jan Charles

Director of Surveys
90-07-12

Bearings are Cassini Grid, based on Solar Obs.
Note: To obtain compass bearings add/subtract

SCALE 1/2500

minutes

Distances are in Metres

PLAN of a Parcel of land coloured pink in the Ward of Tobago
Containing nine hundred and twenty nine point zero square metres
Surveyed by me, with due authority, in April 1986

I certify that I have complied with rule 76 under section 14(2)(d) of the
Land Surveyors' Ordinance 1952, and that this plan is correct.

Checked by *G. Rachev*
11/7/90

Land Surveyor, Trinidad

A. Deenan
27th June 1986

TS
24/5/90