

No

22611

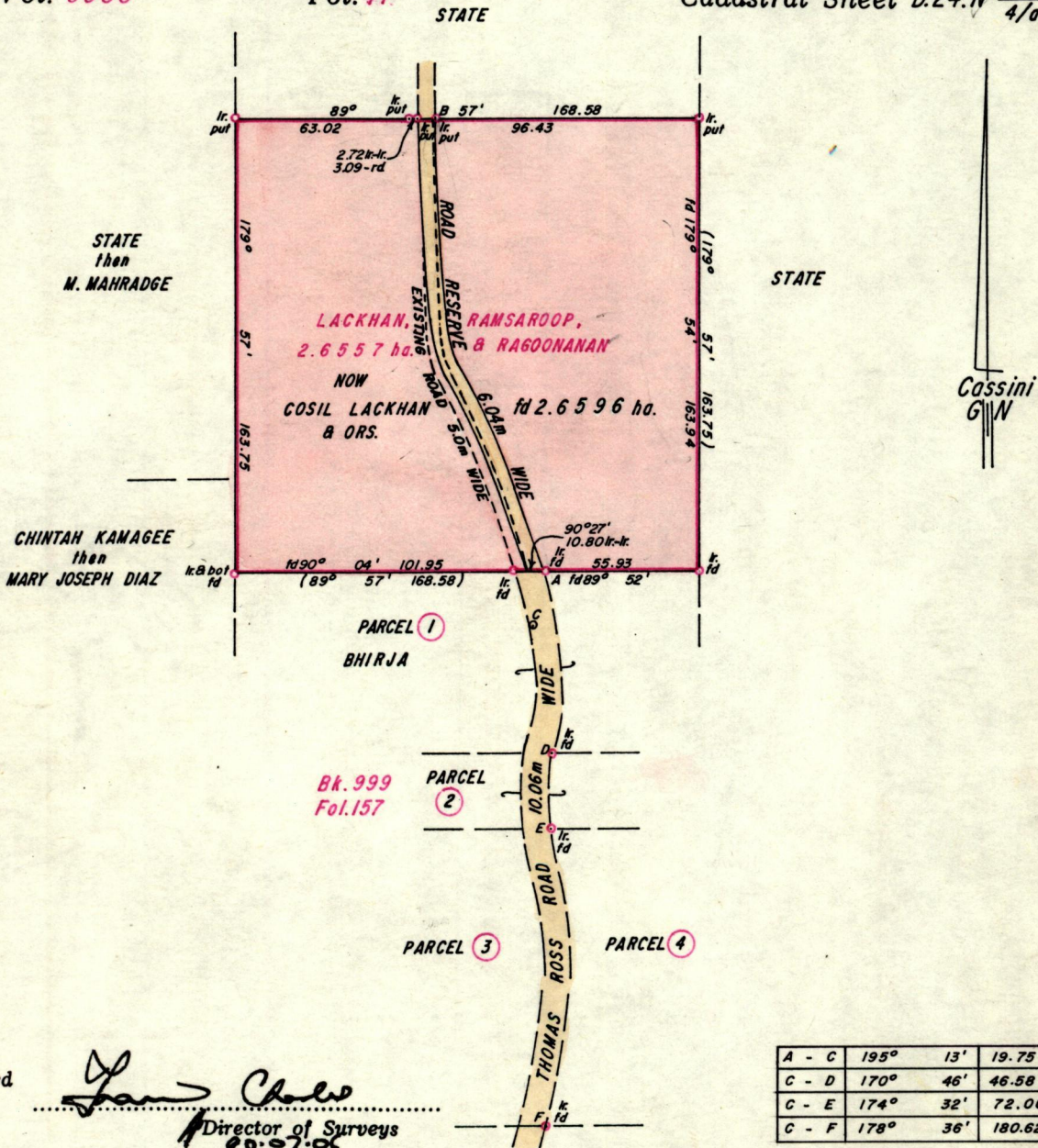
1145

381  
381

R.P.O. Vol. 21  
C.T. Vol. 3088

Fol. 607  
Fol. 47

Ward of Savana Grande  
County of Victoria  
Cadastral Sheet D.24.N  $\frac{548}{4/a}$



Approved

*[Signature]*

Director of Surveys  
90.07.89

Bearings are based on solar observations

Note: To obtain compass bearings add/subtract

SCALE 1:2500  
minutes

Distances are in Metres

PLAN of a Parcel of land coloured pink in the Ward of Savana Grande  
Containing two point six five nine six hectares

Surveyed by me, with due authority, in January 1989

I certify that I have complied with rule 76 under section 14(2)(d) of the  
Land Surveyors' Ordinance 1952, and that this plan is correct.

Checked by *G. Ramcharan*  
6/7/90

*[Signature]*  
Land Surveyor, Trinidad 22<sup>nd</sup> January 1990

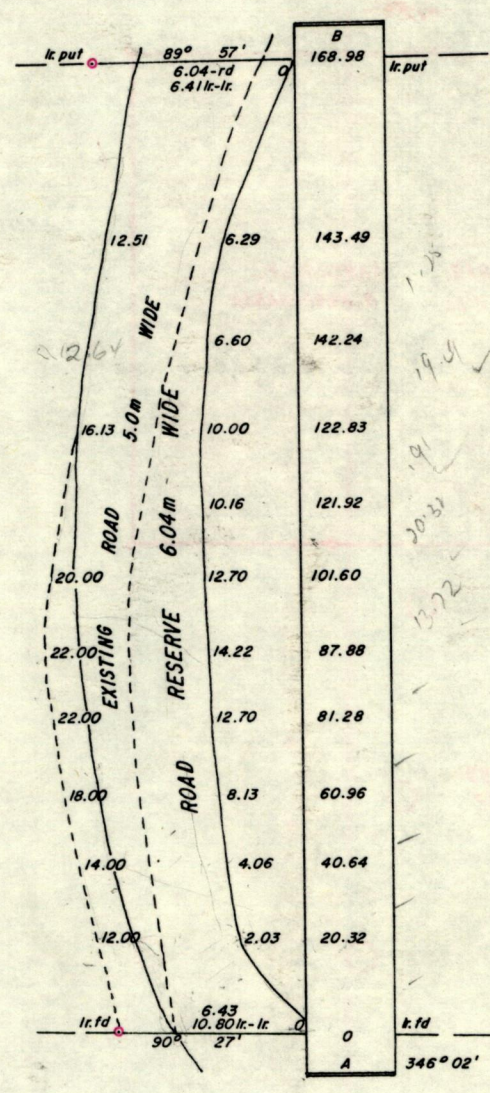
Entered

*[Handwritten]*  
21/6/1990

P.T.O.



Orig Survegi: Blc 712 fsl 88



$\frac{168}{5.6} = 30$