

1145

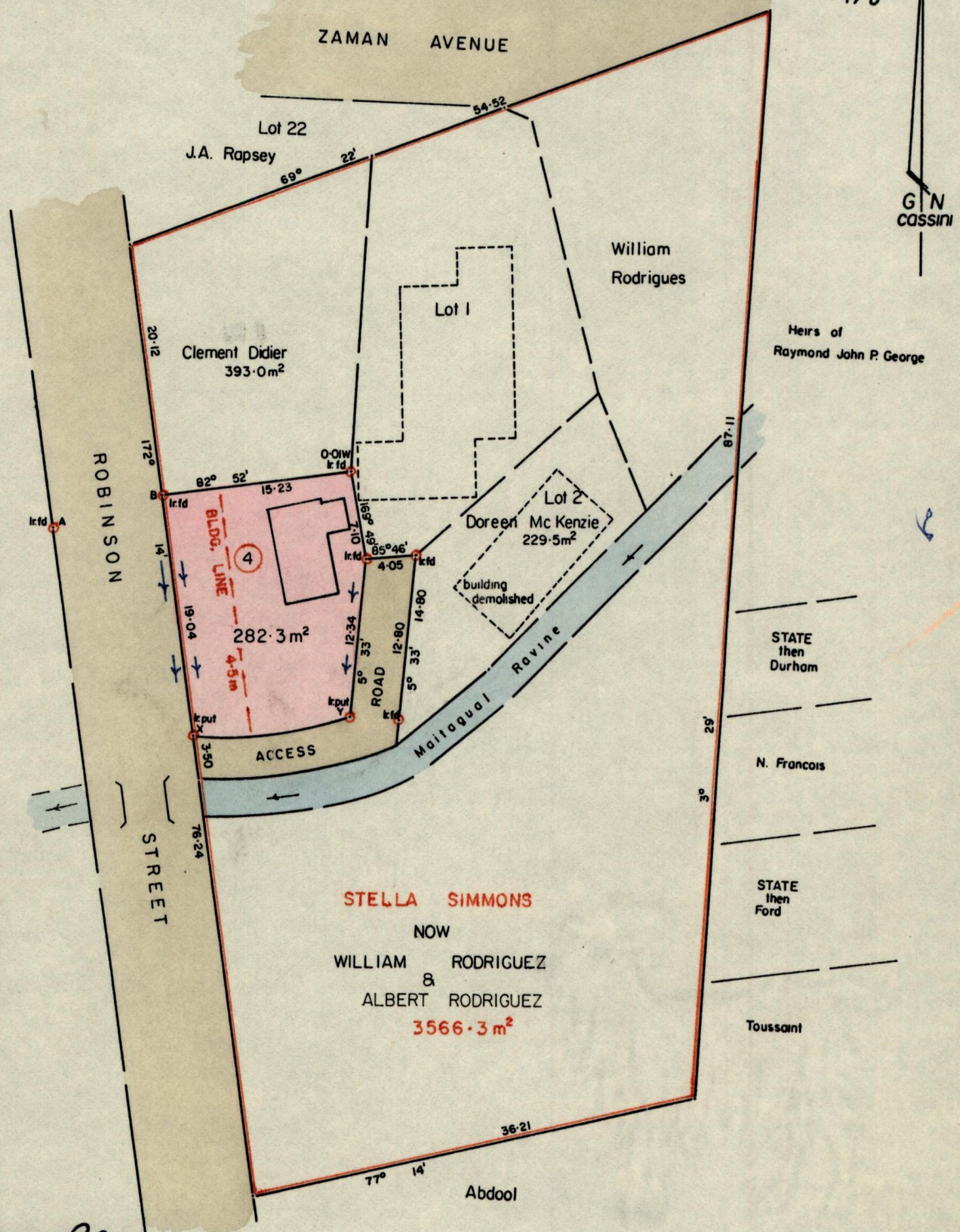
370

R.P.O. Vol. 405  
C.T. Vol. 1448

Fol. 289  
Fol. 401

Ward of St. Anns  
County of St. George  
Cadastral Sheet B.17.K.

23C  
1/b



Y	12.70	0
7	0.6	
0	0	
X	83° 16'	

A - B 73° 33' 9.09  
X - Y 83° 16' 12.70

Approved

*James Charles*  
Director of Surveys  
90-06-22

SCALE 1/500

Note: To obtain compass bearings add/subtract 1 minutes Distances are in metres

PLAN of a Parcel of land coloured pink in the Ward of St. Anns

Containing two hundred and eighty two point three square metres

Surveyed by me, with due authority, in November 1989

I certify that I have complied with rule 76 under Section 14 (2) (d) of the Land Surveyors' Ordinance 1952, and that this plan is correct.

Checked by *G. Ranchea* 25/11/90

*Leslie Hatfield*  
Land Surveyor, Trinidad 28th Nov. 1989

Entered.....