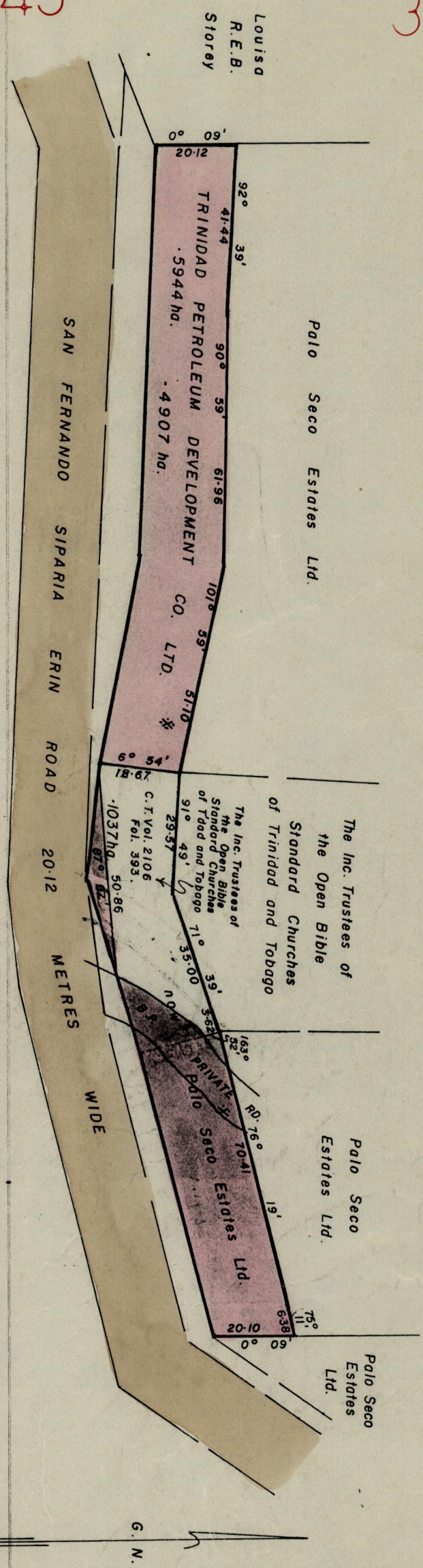


R. P. O. Vol. 692 Fol. 197  
C. T. Vol. Fol.

Ward of Erin  
County of St. Patrick  
Cadastral Sheet G.16.N. (72C).



Approved

*K. B. Jones*  
Director of Surveys  
84.2.03

Scale 1-1250  
Distances are in metres.

This is a true copy of a diagram of Point five nine four four hectares originally transferred to TRINIDAD PETROLEUM DEVELOPMENT CO. LTD, shewing a portion coloured pink and containing Point four nine zero seven hectares being the remainder after one previous transfer of another portion of the land, the dividing lines having been run in conformity with Rule 76 under Section 14 (2) (d) of the Land Surveyors' Ordinance 1952 and duly certified by the Director of Surveys.

Checked by *[Signature]*  
83.12.16

*[Signature]*  
Land Surveyor, Trinidad  
2nd February 1983

Entered on.....