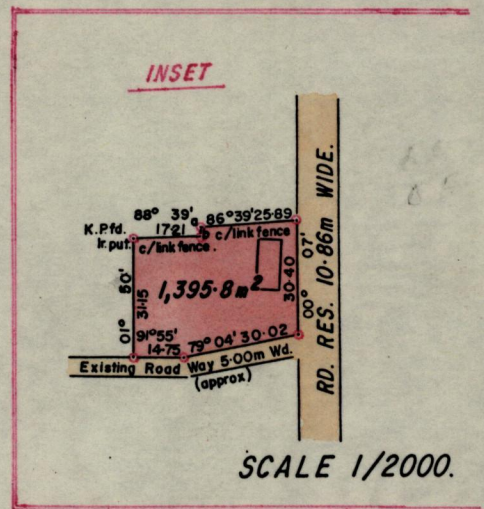
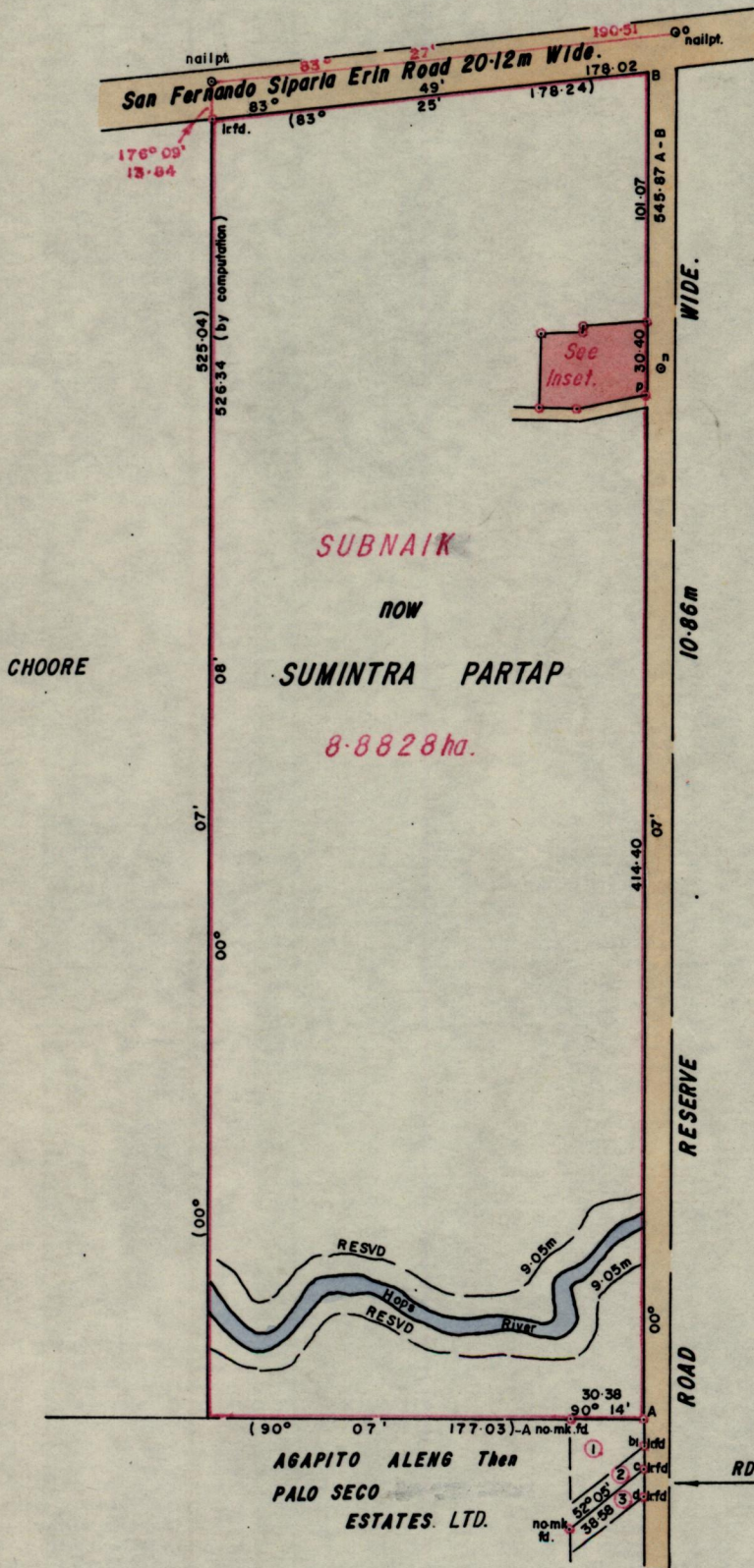


See Bk. 482 fol. 290



STA.	BEAR.	DIST.
b - a	05° 16'	2.53
p - n	29° 49'	12.29
n - o	02° 18'	137.30
b <sub>1</sub> - A	00° 07'	10.64
c - b <sub>1</sub>	00° 07'	9.68 (9.73)
d - c	00° 07'	10.95 (10.92)

Approved

*Jankaran Meeso*  
 Director of Surveys  
 90.06.26

• Denotes Iron put.

SCALE 1/3000.

Bearings are based on Solar Observations. (Cassini Grid.)  
 Note: To obtain compass bearings add/subtract 7 minutes

Distances are in metres

PLAN of a Parcel of land coloured Pink in the Ward of Erin.

Containing one thousand, three hundred and ninety five point eight square metres  
 Surveyed by me, with due authority, in July, 1989

I certify that I have complied with rule 76 under section 14(2)(d) of the  
 Land Surveyors' Ordinance 1952, and that this plan is correct.

Checked by *G. Ramchand*  
 12/6/90

*Jankaran Meeso*  
 Land Surveyor, Trinidad JAN 10<sup>th</sup> 1990

Entered