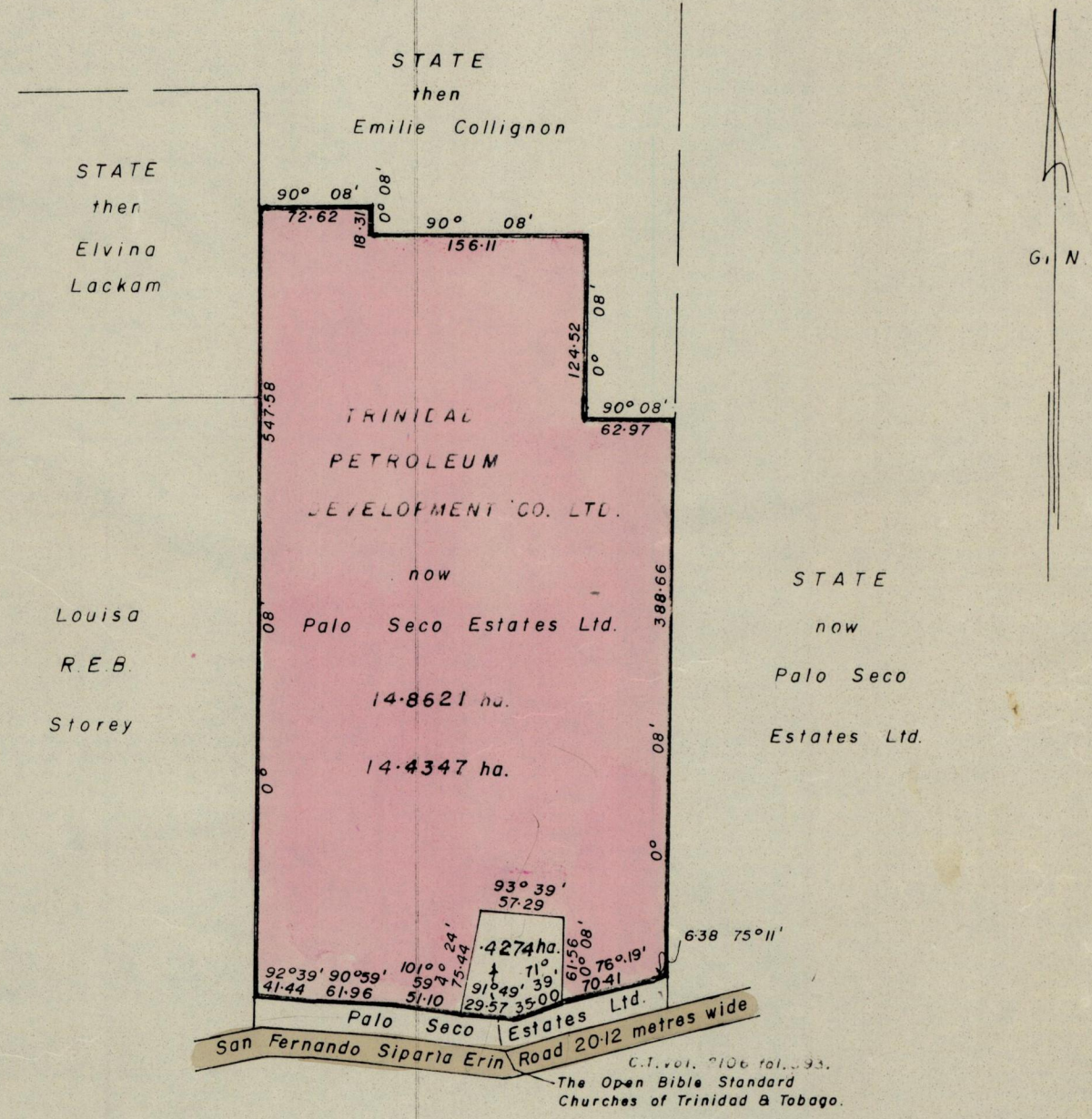


R.P.O. Vol. 118 Fol. 35
C. of T. Vol. 667 Vol. 257

Cadastral Sheet G. 16. N. (72C)
Ward of Erin
County of St. Patrick

1145

36



C.T. vol. 2106 fol. 293.
The Open Bible Standard Churches of Trinidad & Tobago.

Approved

H.B. Joseph
Director of Surveys
8.4.11

SCALE 1 - 4752.

Note: To obtain compass bearings ~~add~~ 8 minutes subtract

Distances are in metres.

This is a true copy of a diagram of Fourteen point eight six two one hectares originally transferred granted to TRINIDAD PETROLEUM DEVELOPMENT COMPANY LTD. , shewing a portion coloured pink and containing Fourteen point four three four seven hectares being the remainder after one previous transfer of another portion of the land. the dividing lines having been run in conformity with Rule 76 under Sec. 7(d) of Cap. 27. No. 2 and duly certified by the Director of Surveys.

Checked by *[Signature]*
Entered on

[Signature]
Land Surveyor, Trinidad, 1st November 1982