

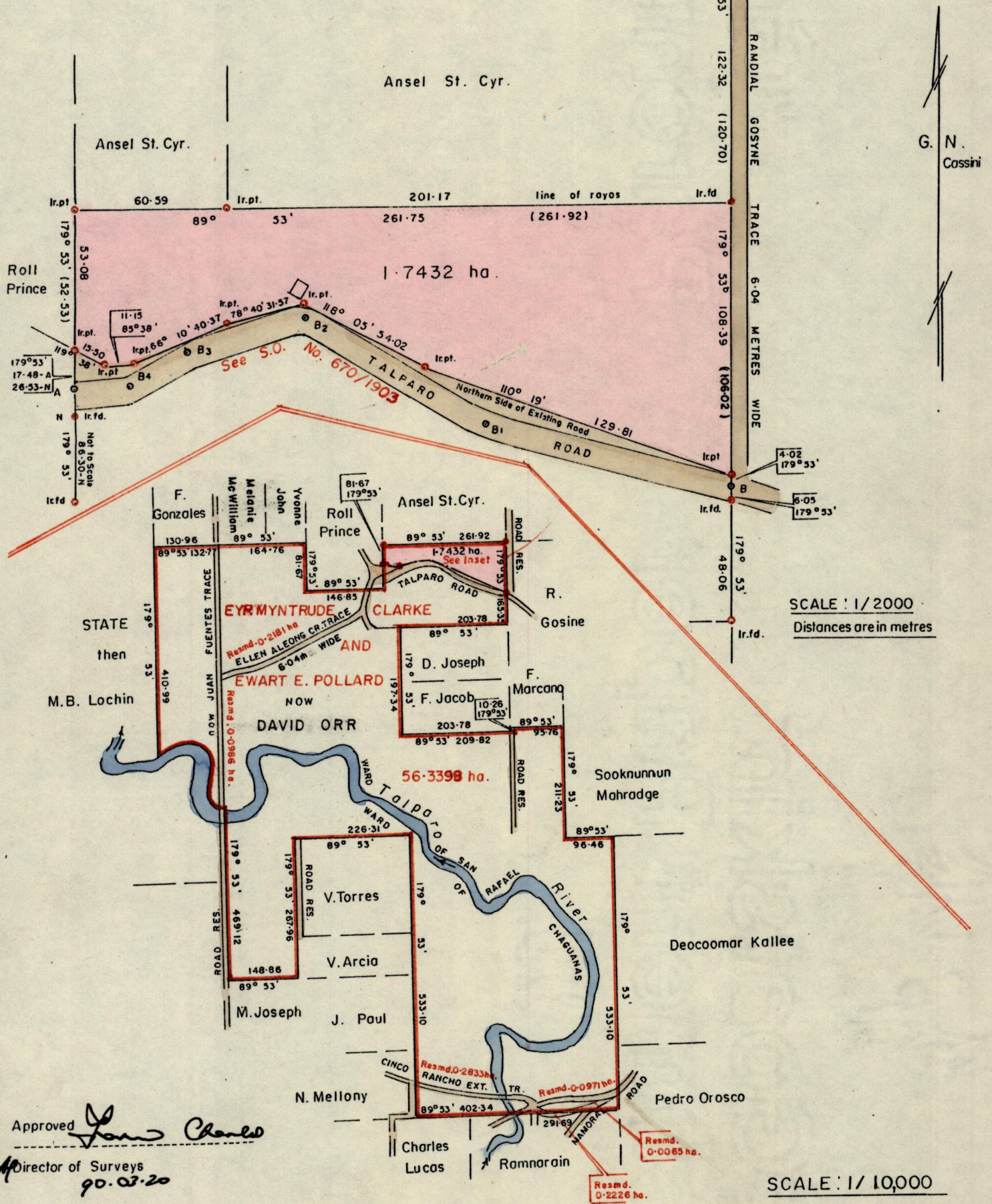
1145

Ally Hosein

Ward of San Rafael  
County of St. George

299

INSET



SCALE : 1/2000  
Distances are in metres

SCALE : 1/10,000  
Distances are in metres

Approved *[Signature]*

Director of Surveys  
90.03.20

To obtain compass bearings add 7 minutes

Plan of a parcel of land coloured pink in the Ward of San Rafael  
Containing one point seven four three two hectares.

Surveyed by me, with due authority in January and May 1989

I certify that I have complied with Rule 76 under Section 14 (2)(d) of the Land Surveyors' Ordinance 1952,  
and that this plan is correct.

Checked by *9216/3/90*

Entered

*Arnold A. F. Ramon* *[Signature]* ARIES.

Land Surveyor, Trinidad. 20th July 1989.