

1145

INSET

Henry Alfonso Orr

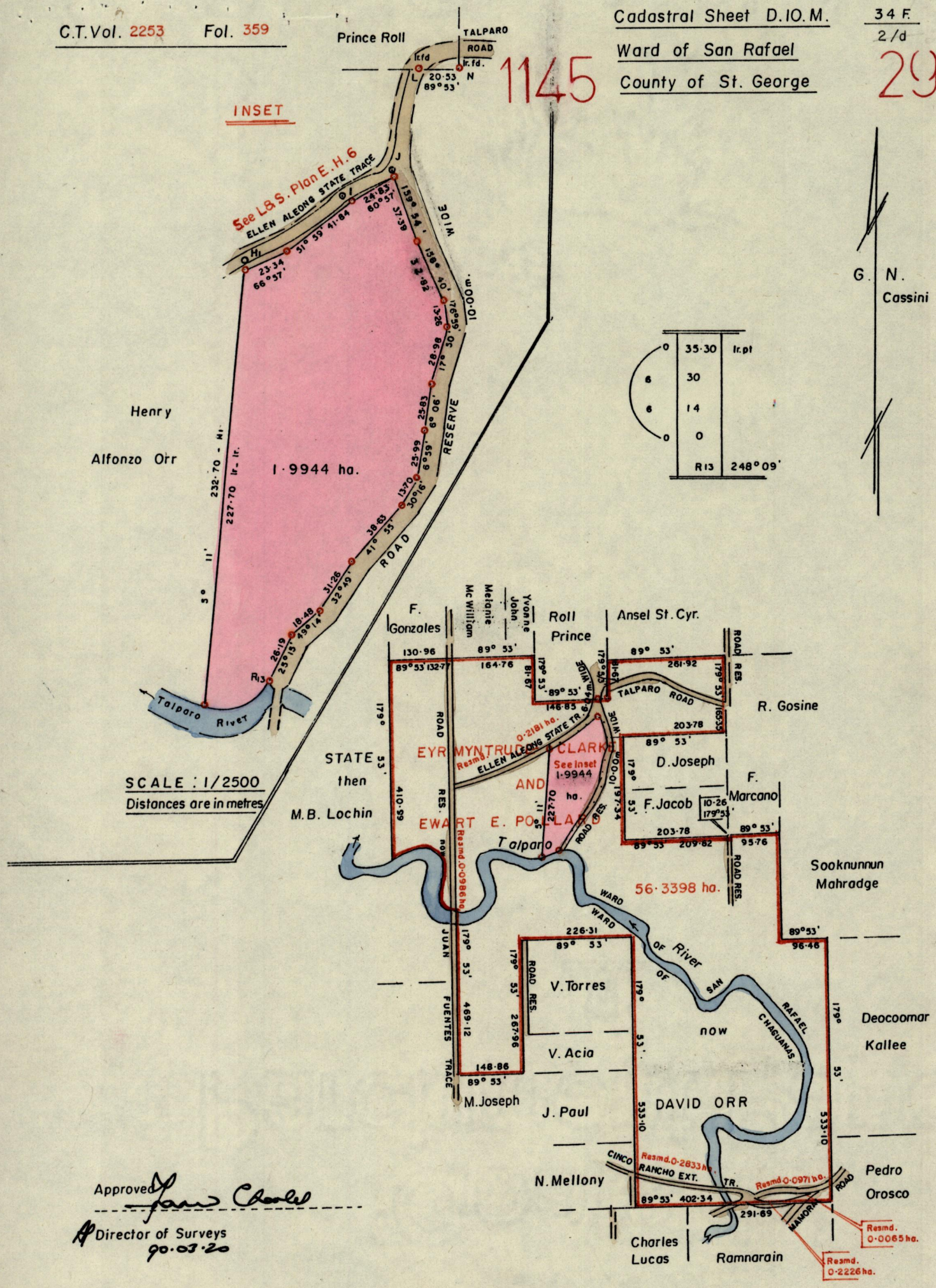
See L.S. Plan E.H. 6
ELLEN ALEONG STATE TRACE

1.9944 ha.

0	35.30	Ir. pt
6	30	
6	14	
0	0	
R13	248°09'	

G. N. Cassini

SCALE : 1/2500
Distances are in metres



Approved *[Signature]*
 Director of Surveys
 90.03.20

Iron put at each corner except where otherwise indicated
 To obtain compass bearings add 7 minutes

Plan of a parcel of land coloured pink in the Ward of San Rafael
 Containing one point nine nine four four hectares

Surveyed by me, with due authority in February and March 1989
 I certify that I have complied with Rule 76 under Section 14(2)(d) of the Land Surveyors' Ordinance 1952,
 and that this plan is correct.
 Checked by *SR 16/3/80*
 Entered _____

[Signature]
 Land Surveyor, Trinidad 20th July 1989

SCALE : 1/10,000
 Distances are in metres