

R.P.O. Vol. 129

Fol. 291

1145

Cadastral Sheet G.16.M 72F/1/b

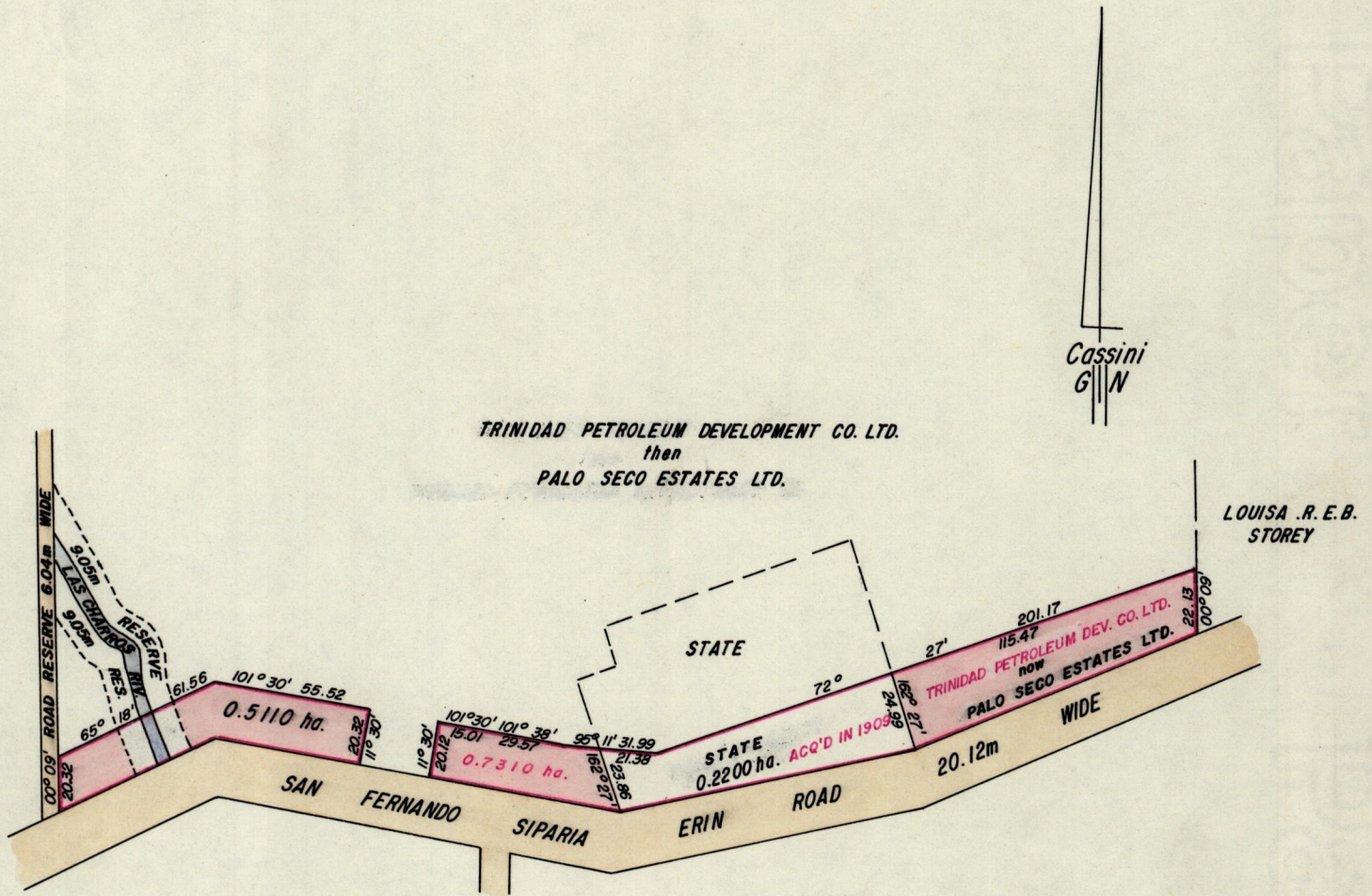
2831

C. of T. Vol. 648

Vol. 403

Ward of Erin

County of St. Patrick



Approved

John Chubb
 Director of Surveys
 90.01.20

SCALE 1:2500

Note: To obtain compass bearings ^{add} 9 minutes
 subtract

Distances are in Metres

This is a true copy of a diagram of zero point seven three one zero hectares originally transferred granted to Trinidad Petroleum Development Co. Ltd. , shewing a portion coloured pink and containing zero point five one one zero hectares being the remainder after one previous transfer of another portion of the land. the dividing lines having been run in conformity with Rule 76 under Sec. 14(2) (d) of the Land Surveyors Ordinance 1952 ~~7(a) of Chap. 27. No. 2~~ and duly certified by the Director of Surveys.

Checked by *GR 20/2/90*

Entered on

Jumark
 Land Surveyor, Trinidad, 21st October 1989