

1145

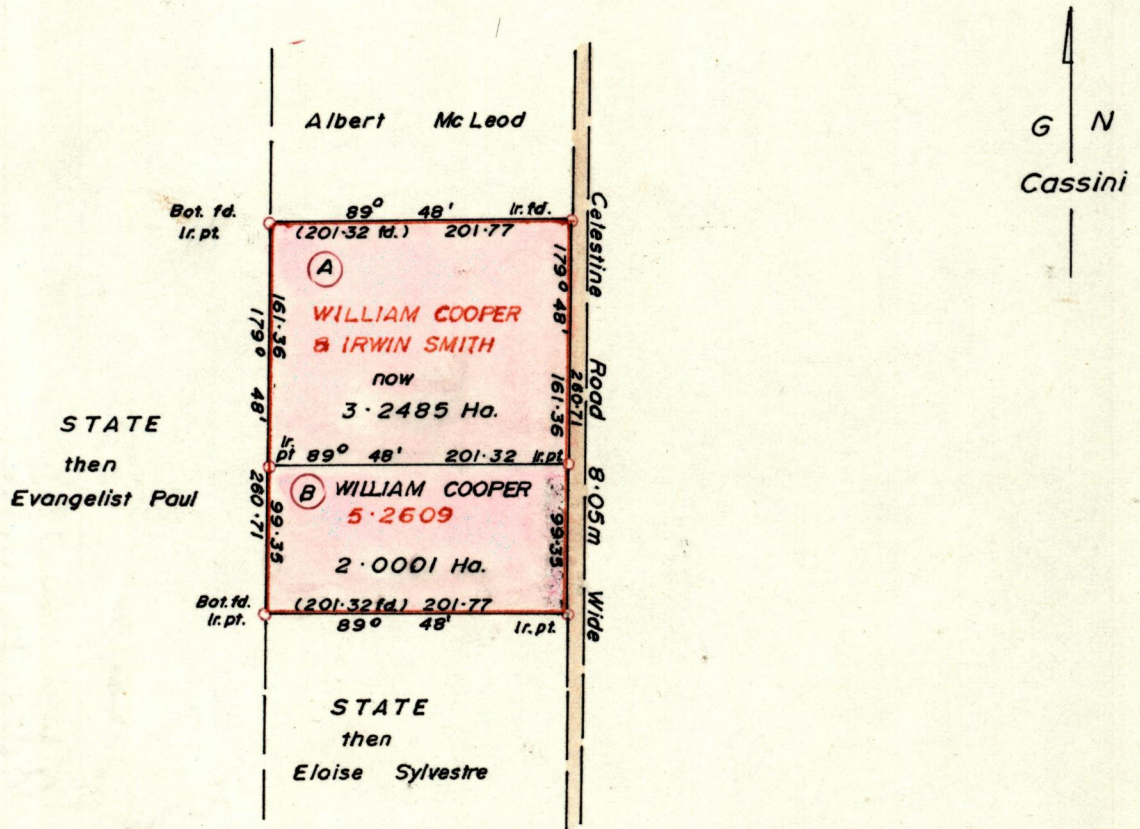
277

No 24224

R.P.O. Vol. 52  
C.T. Vol. 2708  
C.T. Vol. 5556

Fol. 93  
Fol. 485  
Fol. 389

Ward of Tamana  
County of St. Andrew  
Cadastral Sheet E. 6. N. <sup>35E</sup>/<sub>1/d</sub>



Approved Law Chole  
Director of Surveys  
90.02.12

SCALE 1:5000

Note: To obtain compass bearings add/subtract 12 minutes Distances are in metres

PLAN of 2 Parcelsof land coloured pink in the Ward of Tamana  
Containing together five point two four eight six hectares.

Surveyed by me, with due authority, in April, 1987

I certify that I have complied with rule 76 under section 14(2)(d) of the  
Land Surveyors' Ordinance 1952, and that this plan is correct.

Checked by 2/2/90 Dr. J. J. L. L.

Entered ..... Land Surveyor, Trinidad ..... 19 89

