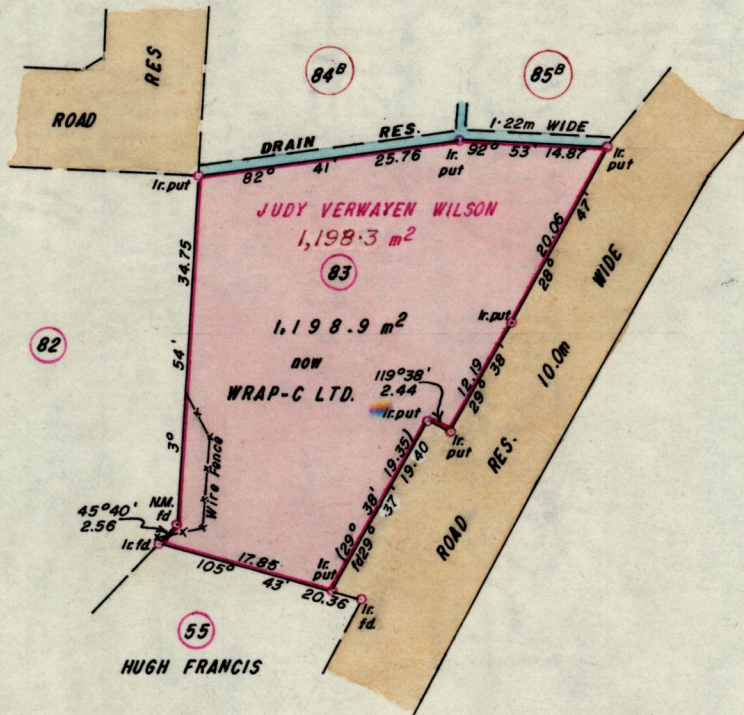


No 22501

R.P.O. Vol. 740
C.T. Vol. 2217

Fol. 235
Fol. 331

Ward of Diego Martin
County of St. George
Cadastral Sheet A.19.B. $\frac{12.F.}{1/d.}$



Approved

Jean Chelo
 Director of Surveys
 90-02-12

SCALE 1:750

Note: To obtain compass bearings add/subtract

minutes

Distances are in Metres

PLAN of a Parcel of land coloured pink in the Ward of Diego Martin
 Containing one thousand one hundred and ninety eight point nine square metres
 Surveyed by me, with due authority, in September 1989

I certify that I have complied with rule 76 under section 14(2)(d) of the
 Land Surveyors' Ordinance 1952, and that this plan is correct.

Checked by *M.A.* 2/2/90

Harold Somarsyl
 Land Surveyor, Trinidad 15th September 1989