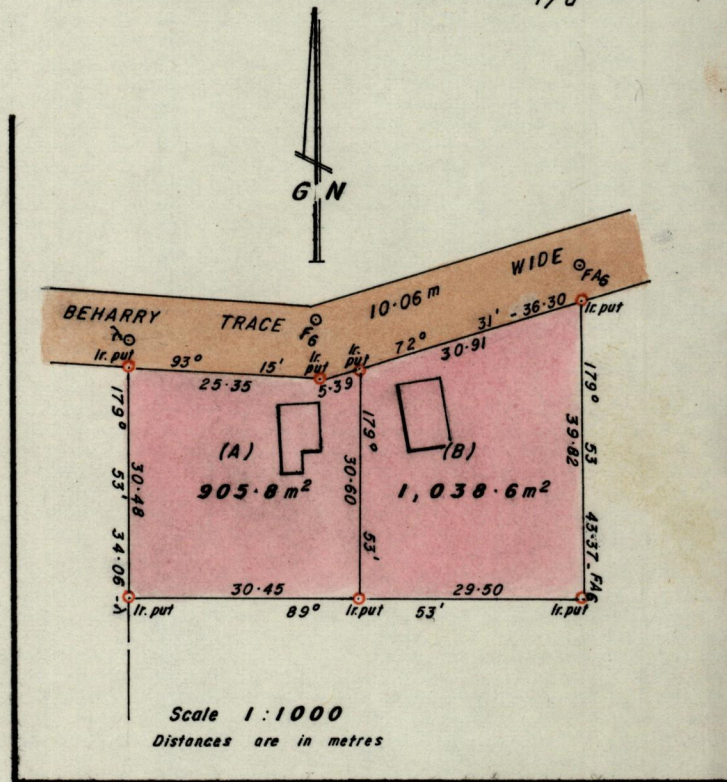
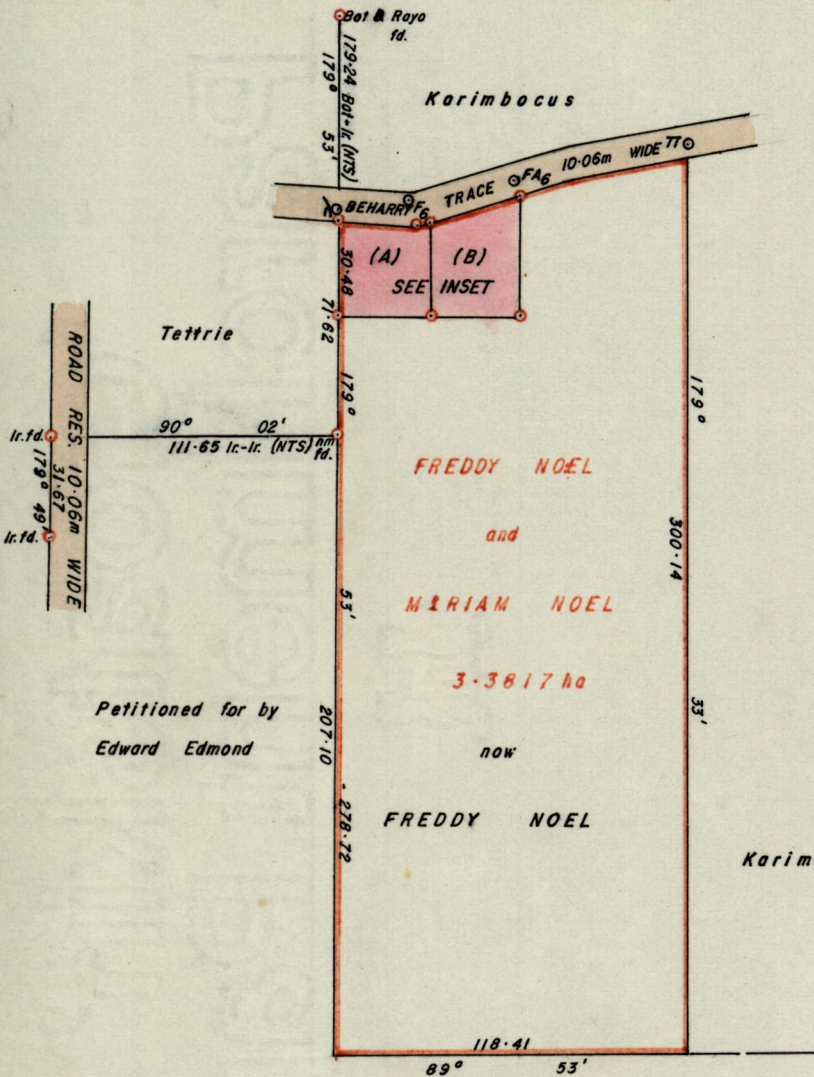


No 25484

R.P.O. Vol. 630
C.T. Vol. 1795

Fol. 129
Fol. 313

Ward of Choruma
County of Nariva
Cadastral Sheet (H.2.A.) $\frac{55E}{1/0}$



LEGEND

STA	BRG	DIST
A - F6	85° 23'	24.82
F6 - FA6	78° 04'	35.97
FA6 - TT	78° 04'	58.28

Petitioned for by
Edward Edmond

Approved
James Chole
Director of Surveys
30.02.12

SCALE 1:2500

Note: To obtain compass bearings add/subtract 10 minutes Distances are in metres

PLAN of 2 Parcels of land coloured pink in the Ward of Choruma
Containing together one thousand nine hundred and forty four point four square metres
Surveyed by me, with due authority, in October 1984

I certify that I have complied with rule 76 under section 14(2)(d) of the
Land Surveyors' Ordinance 1952, and that this plan is correct.

Checked by *[Signature]* 9/02/90
Entered *[Signature]* 7th December 1984
Land Surveyor, Trinidad and Tobago