

1161

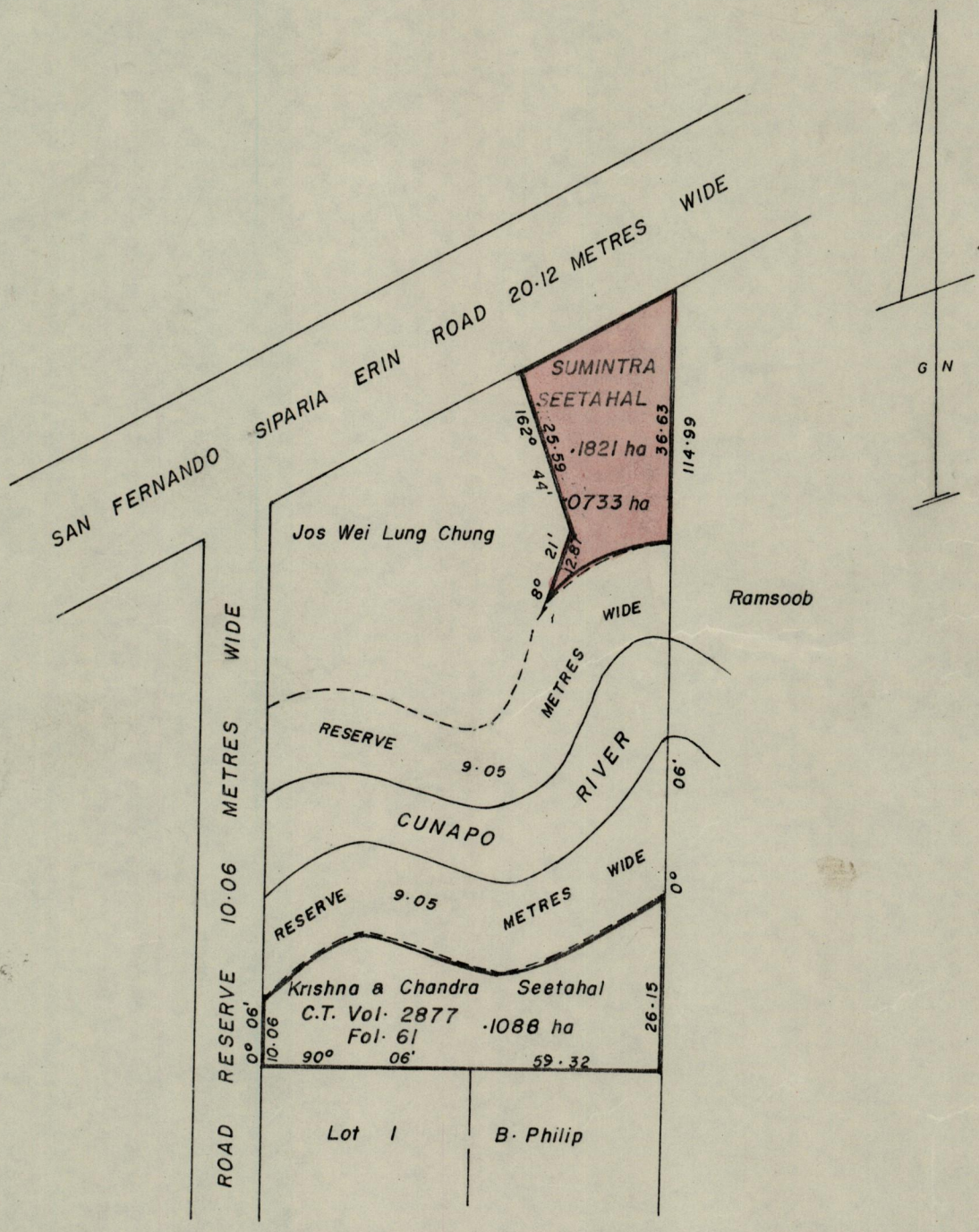
REMAINING PORTION

R.P.O. Vol. 148 Fol. 581
C. of T. Vol. 1941 Vol. 193

Cadastral Sheet G 17 A
Ward of Siparia
County of St Patrick

1145

26 26



Approved

K. B. Joseph
Director of Surveys

SCALE 1/1000

Note: To obtain compass bearings ^{add} 6 minutes _{subtract}

Distances are in metres

This is a true copy of a diagram of point one eight two one hectares originally transferred granted to SUMINTRA SEETAHAL, shewing a portion coloured pink and containing point zero seven three three hectares being the remainder after one previous transfer of another portion of the land. the dividing lines having been run in conformity with Rule 76 under Sec. 7(d) of Cap. 27, No. 2 and duly certified by the Director of Surveys.

Checked by *85/06/14*

Entered on

Albert Hayes
Land Surveyor, Trinidad, 3rd December 1984