

No 22494

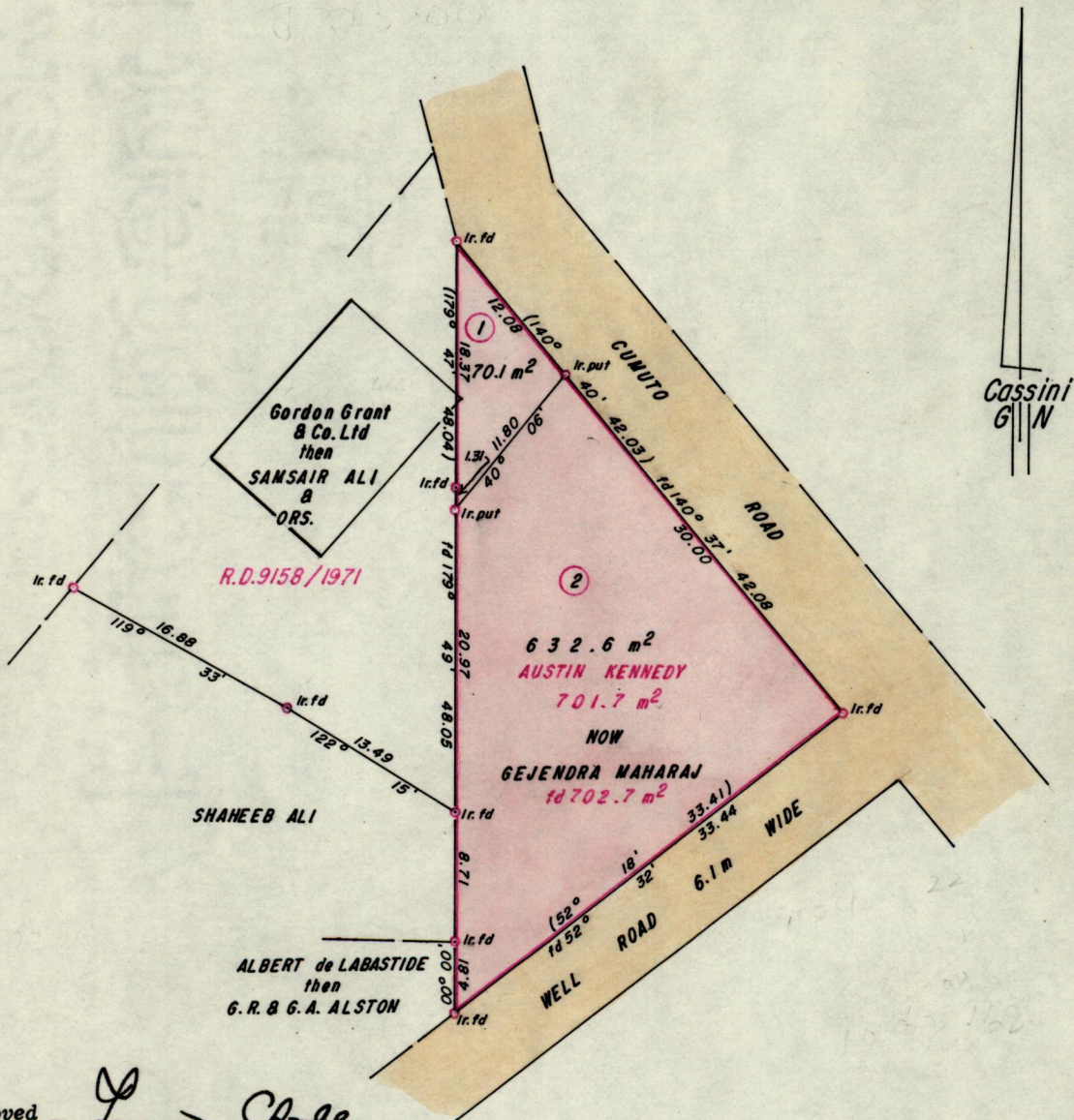
1145

239

R.P.O. Vol. 530
C.T. Vol. 2629

Fol. 251
Fol. 229

Ward of Tamana
County of St. Andrew
Cadastral Sheet C.21.M. $\frac{250}{27d}$



Approved *[Signature]*
Director of Surveys
Sp. 12-11

Bearings are based on solar observations

SCALE 1:500

Note: To obtain compass bearings add/subtract

minutes

Distances are in Metres

PLAN of 2 Parcel of land coloured pink in the Ward of Tamana
Containing together, seven hundred and two point seven square metres
Surveyed by me, with due authority, on the 18th March 1989

I certify that I have complied with rule 76 under section 14(2)(d) of the
Land Surveyors' Ordinance 1952, and that this plan is correct.

Checked by *[Signature]* 8/12/89

[Signature] Kamchar Ban
Land Surveyor, Trinidad 1/12/89

Entered

.....19.....