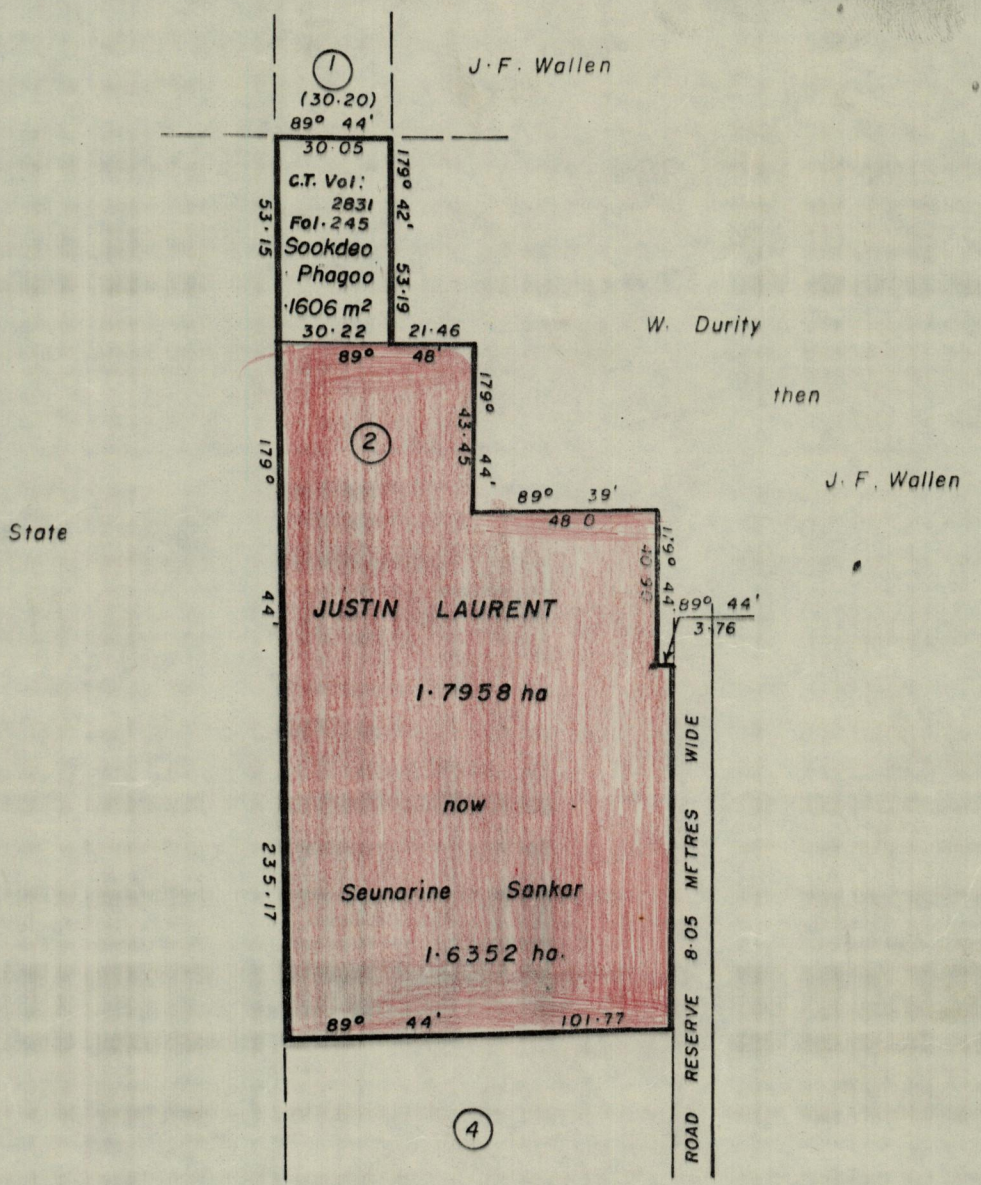


1145

23

23



Approved

K B Joubert
Director of Surveys

85.6.10

Note: To obtain compass bearings *add* 16 minutes *subtract*

SCALE 1:2000

Distances are in metres

This is a true copy of a diagram of one point seven nine five eight hectares originally granted to JUSTIN LAURENT, shewing a portion coloured pink and containing one point six three five two hectares being the remainder after one previous transfer of another portion of the land. the dividing lines having been run in conformity with Rule 76 under Sec. 14 (2)(d) of the Land Surveyors' Ordinance 1952 and duly certified by the Director of Surveys.

Checked by *HP* 85/06/10

Entered on

John T. Joubert

11-7-1984