

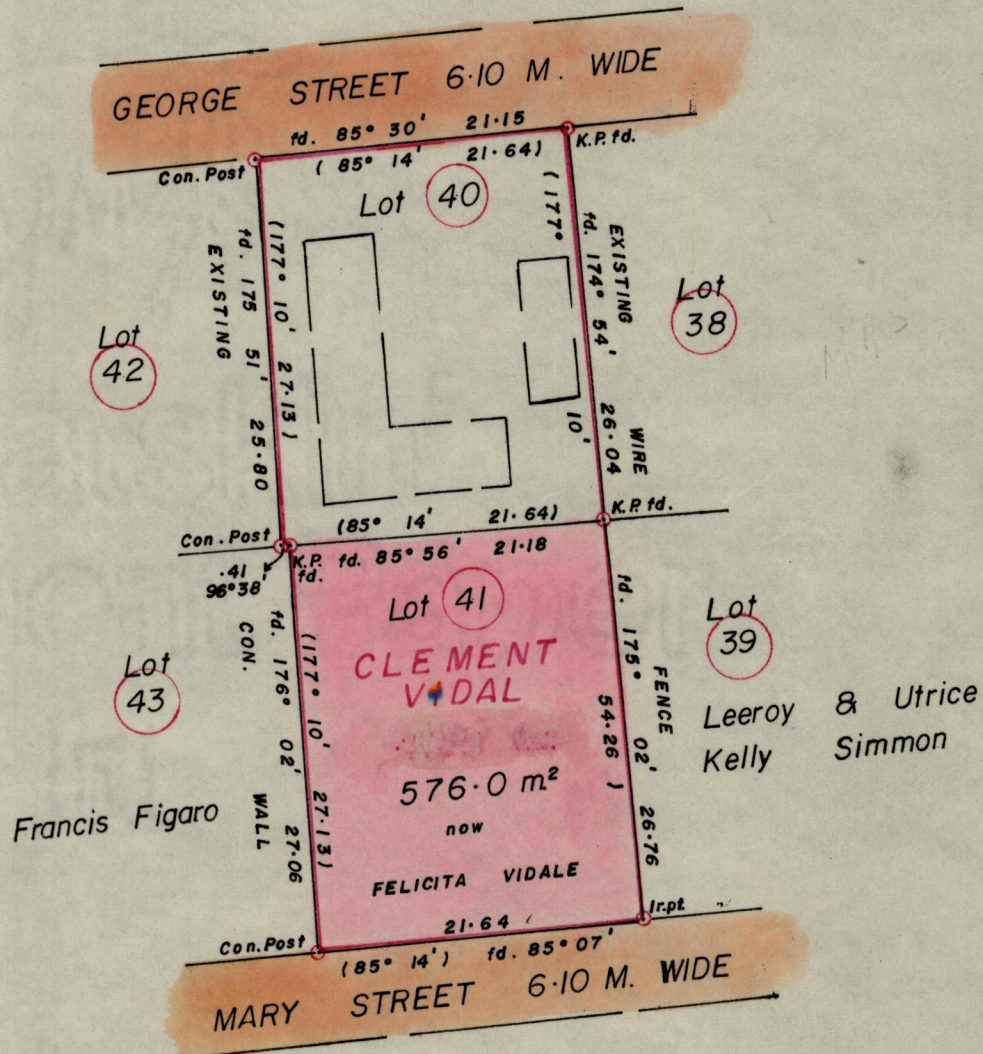
1145

1836

R.P.O. Vol. 18  
C.T. Vol. 2938

Fol. 379  
Fol. 127

Ward of Siparia.  
County of St. Patrick.  
Cadastral Sheet G. 17. C. 73B.  
1/a.



Approved

*James Charles*  
 Director of Surveys  
 89.10.04

SCALE 1:500.

Note: To obtain compass bearings ~~add~~/subtract 4 minutes Distances are in metres.

PLAN of a Parcel of land coloured pink in the Ward of Siparia.  
Containing five hundred and seventy six sq. metres.

Surveyed by me, with due authority, in May 1988.

I certify that I have complied with rule 76 under section 14(2)(d) of the  
Land Surveyors' Ordinance 1952, and that this plan is correct.

Checked by *GA 5/9/89.* *Winston Ramcharan*

Entered ..... Land Surveyor, Trinidad *24<sup>th</sup> May* 19.88.