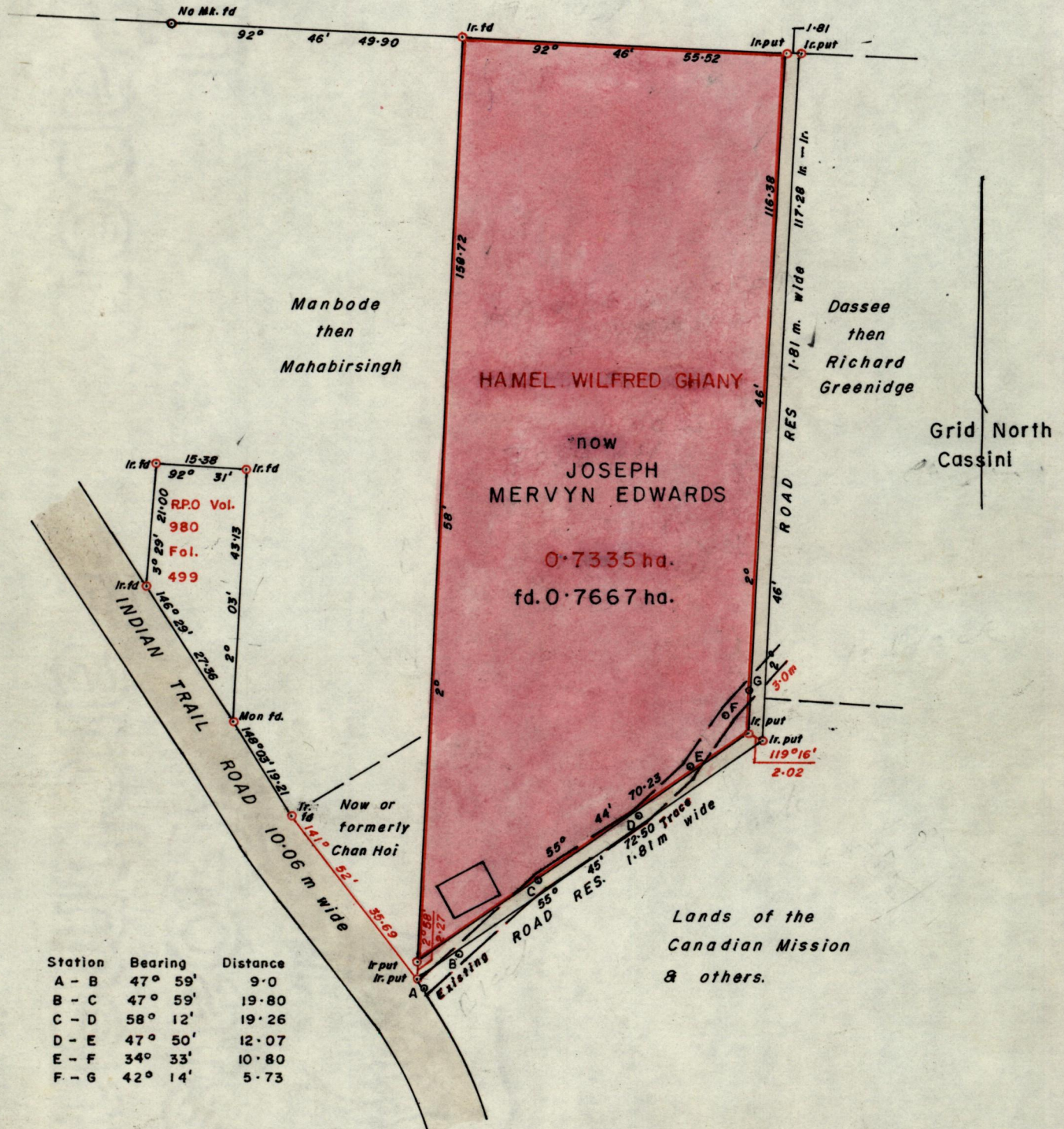


Jungary then Baptiste



Approved *Alwyn...*
Director of Surveys
89.07.25

SCALE 1/1000

Note: To obtain compass bearings add/subtract minutes Distances are in metres
PLAN of a Parcel of land coloured pink in the Ward of Montserrat
Containing point seven six six seven hectares

Surveyed by me, with due authority, in December 1988
I certify that I have complied with rule 76 under section 14(2)(d) of the
Land Surveyors' Ordinance 1952, and that this plan is correct

Checked by *SL 25/7/89* *Lawrence*
Entered *3rd July* Land Surveyor, Trinidad. 19.89

LAWRENCE CLARK
LAND SURVEYOR