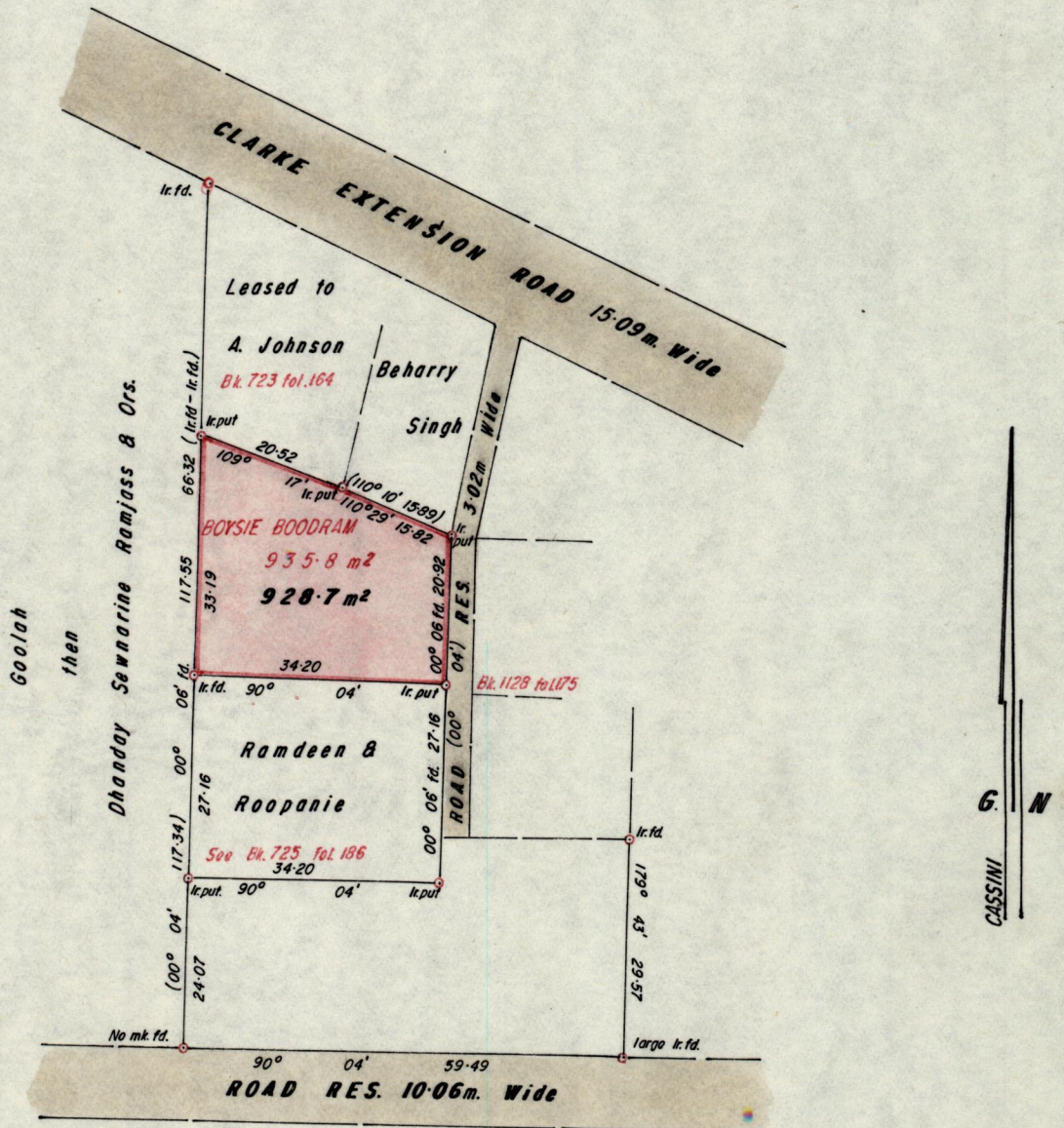


R.P.O. Vol. 241
C.T. Vol. 3286

Fol. 561
Fol. 359

1145 Ward of Siparia
County of St. Patrick
Cadastral Sheet G.13.K. 63.F. 4/a

132



See Bk. 725 fol. 185
Bk. 871 fol. 31

Approved

Alwyn Thib
Director of Surveys
89.06.12

Bearings are based on Solar Observations (Cassini Grid)
Note: To obtain compass bearings add/subtract

SCALE 1/1000
minutes

Distances are in Metres

PLAN of a Parcel of land coloured pink in the Ward of Siparia
Containing nine hundred and twenty eight point seven square metres
Surveyed by me, with due authority, in April 1989

I certify that I have complied with rule 76 under section 14(2)(d) of the
Land Surveyors' Ordinance 1952, and that this plan is correct.

Checked by *St 9/6/89* *Hep Somarsingh*

Entered Land Surveyor, Trinidad *27th May 1989*