

No 32488

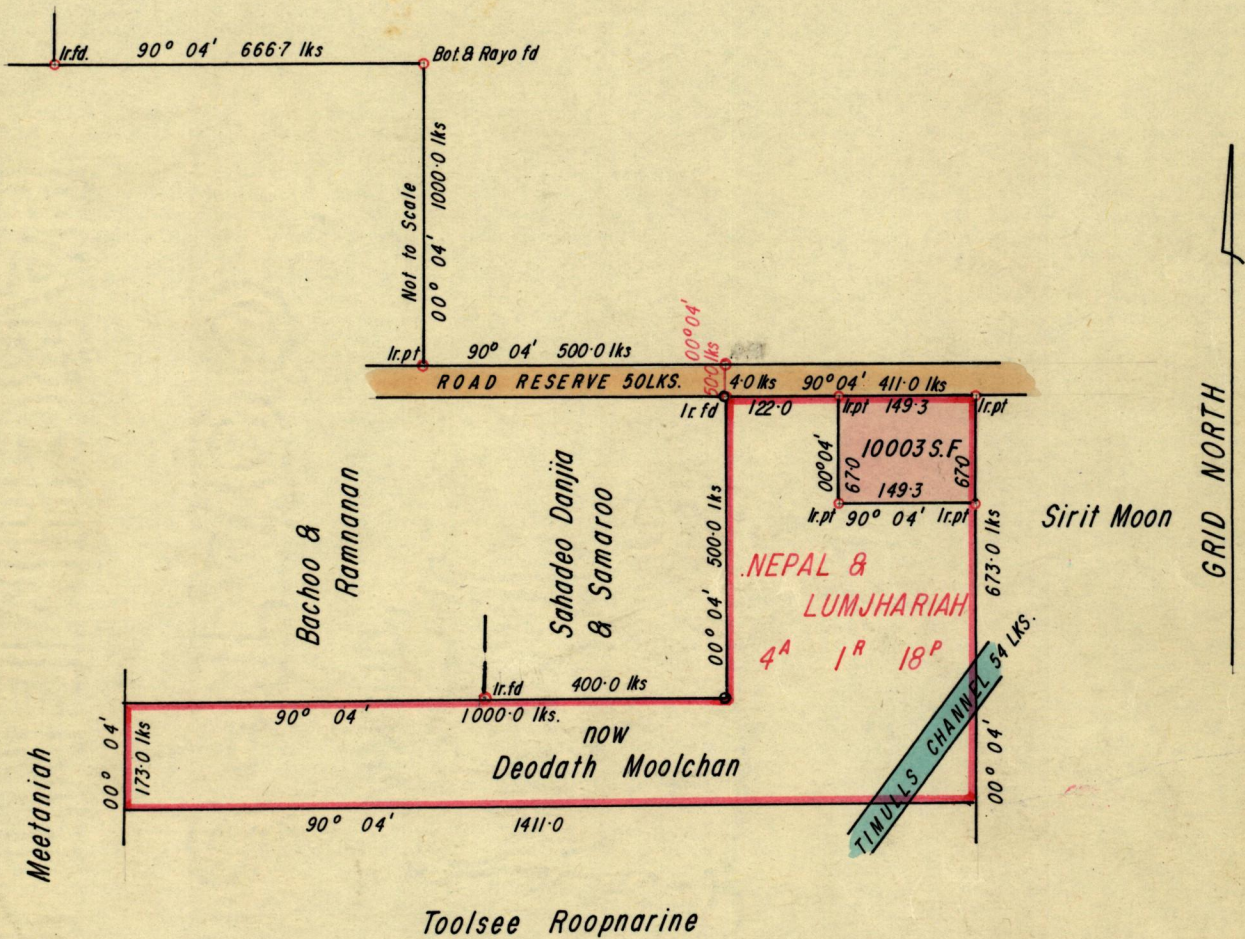
1053

96

R.P.O. Vol 502
C.T. Vol.

Fol. 291
Fol.

Ward of Siparia
County of St. Patrick
Cadastral Sheet G 12 H



Approved

R. H. Farrell

Director of Surveys
2. 2. 73

SCALE 1:2500

Note: To obtain compass bearings add/subtract 4

minutes

Distances are in feet

PLAN of a Parcel of land coloured pink in the Ward of Siparia

Containing Ten thousand and three square feet

Surveyed by me, with due authority, in August 1972

I certify that I have complied with rule 76 under Section 14 (2) (d) of the Land Surveyors' Ordinance 1952, and that this plan is correct.

Checked by *L. J. W. 29/1/73*

R. Pallicharan

Entered

Land Surveyor, Trinidad *20th Nov. 1972*

Original Survey Bk. 718 fol 19

1053

33188

Wm. H. ...
County of ...
State of ...

...
...

