

1053

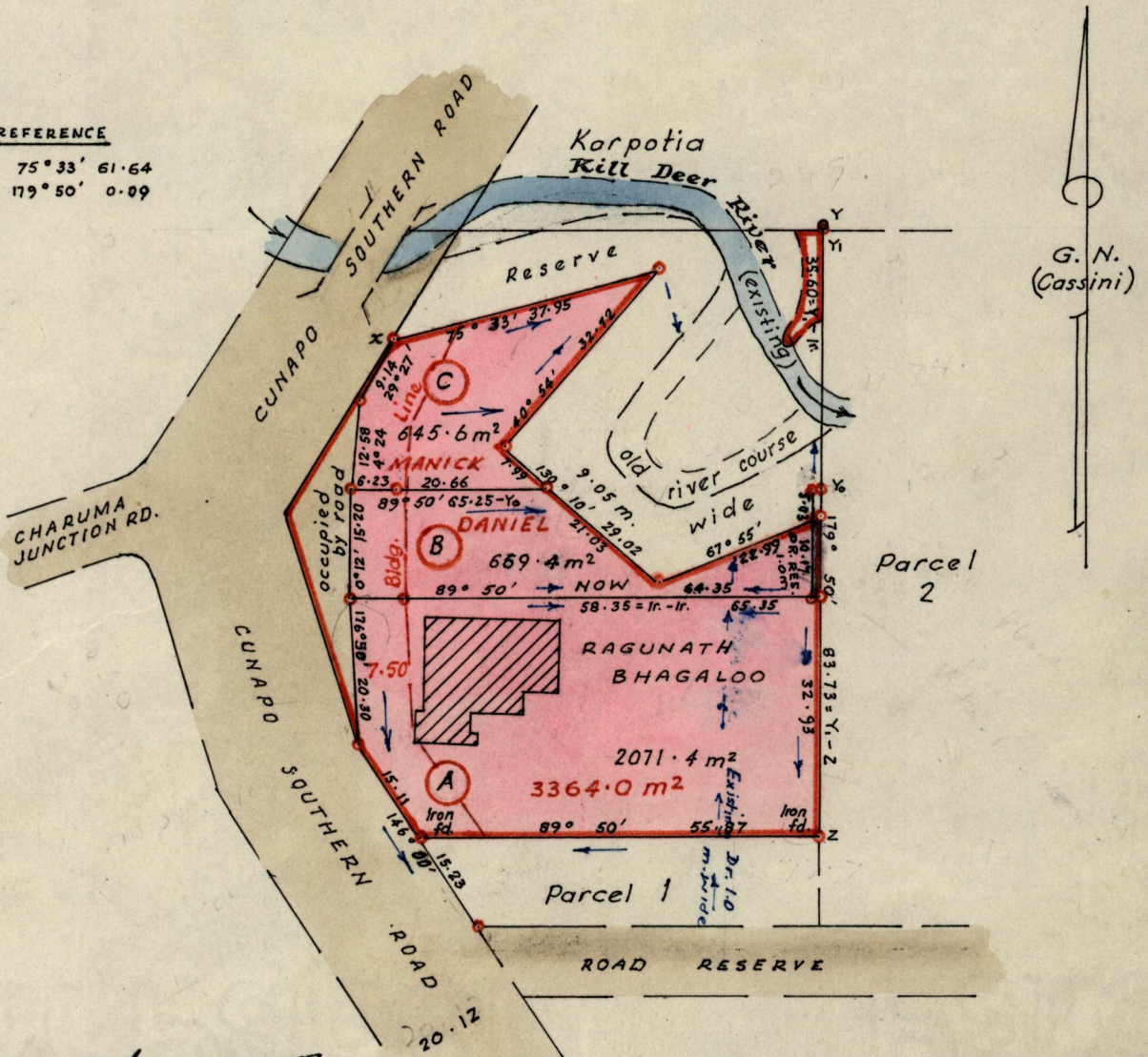
934

R.P.O. Vol. 235  
C.T. Vol. 2212

Fol. 201  
Fol. 369

Ward of Cocal  
County of Nariva  
Cadastral Sheet E. 21. F. (55 B / 1a)

REFERENCE  
X - Y = 75° 33' 61.64  
Y - Y1 = 179° 50' 0.09



Approved

*Alwyn R. R.*  
Director of Surveys  
29.02.14

Iron put at each corner except otherwise indicated.  
Blue arrows indicate direction of drainage.  
SCALE : 1/1000

Note: To obtain compass bearings add ~~minutes~~ 10 minutes Distances are in metres

PLAN of 3 Parcels of land coloured pink in the Ward of Cocal

~~Containing~~

Surveyed by me, with due authority, in June 1988.

I certify that I have complied with rule 76 under section 14(2)(d) of the Land Surveyors' Ordinance 1952, and that this plan is correct.

Checked by *J.R. 19/2/89*

*Bessie B. Spence*  
Land Surveyor, Trinidad 25<sup>th</sup> July 1988

Entered

Land Surveyor, Trinidad 25<sup>th</sup> July 1988

999 34

Orig Bk 993: 34

993

993

