

No 24288

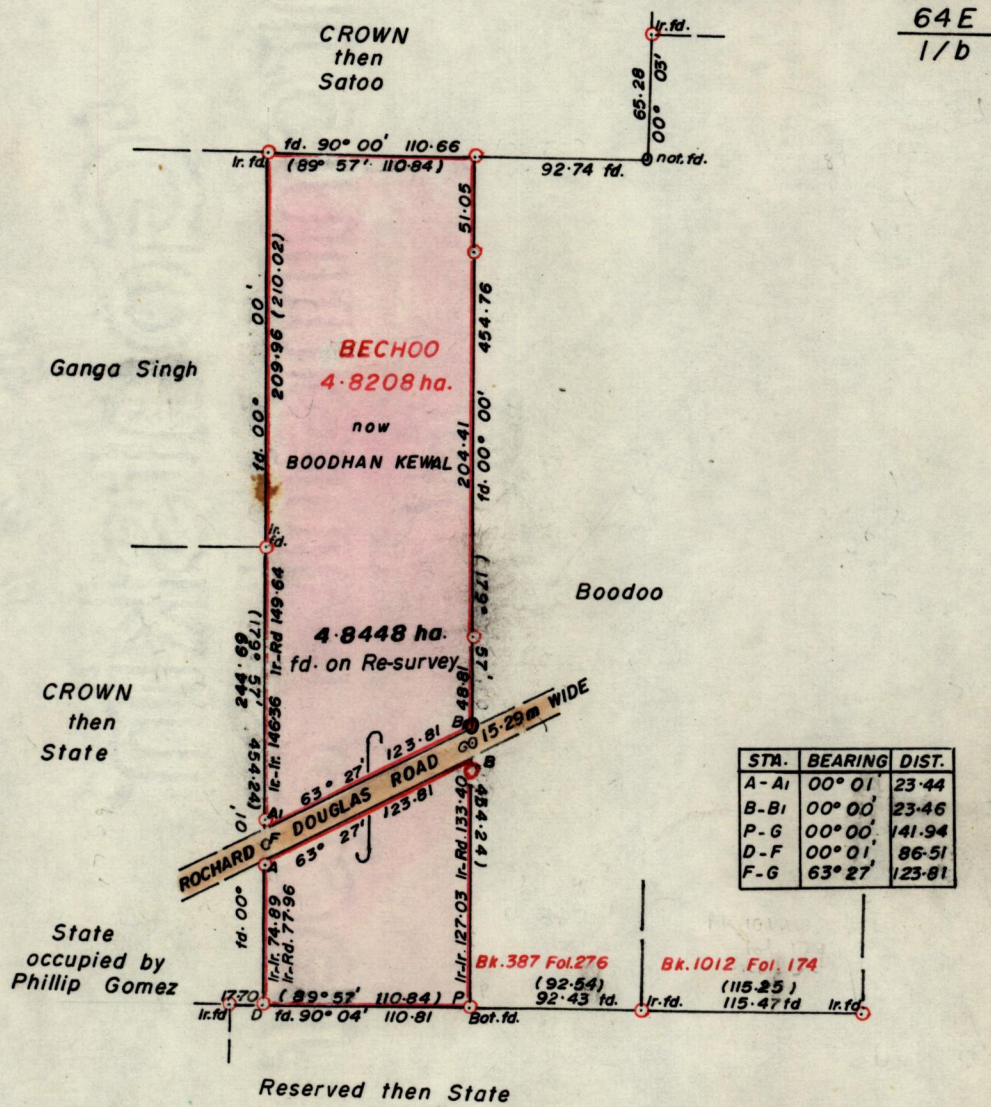
1053

933

R.P.O. Vol. 437  
C.T. Vol. 3183

Fol. 29  
Fol. 369

Ward of Savana Grande  
County of Victoria  
Cadastral Sheet G·15·A & G·10·M



Approved

*Alonso Thibault*  
Director of Surveys  
89.02.13

○ Denotes Iron put except stated otherwise.  
SCALE 1:4000

Note: To obtain compass bearings add/subtract 3 minutes Distances are in metres

PLAN of a Parcel of land coloured pink in the Ward of Savana Grande  
Containing four point eight four eight hectares  
Re-defined by me, with due authority, in June 1987

I certify that I have complied with rule 76 under section 14(2)(d) of the  
Land Surveyors' Ordinance 1952, and that this plan is correct.

Checked by *A. Gomez 13/2/89* *Alonso Thibault*

Entered ..... Land Surveyor, Trinidad ..... 8<sup>th</sup> July 1987



Books 387

Orig BK 387 : 270