

No

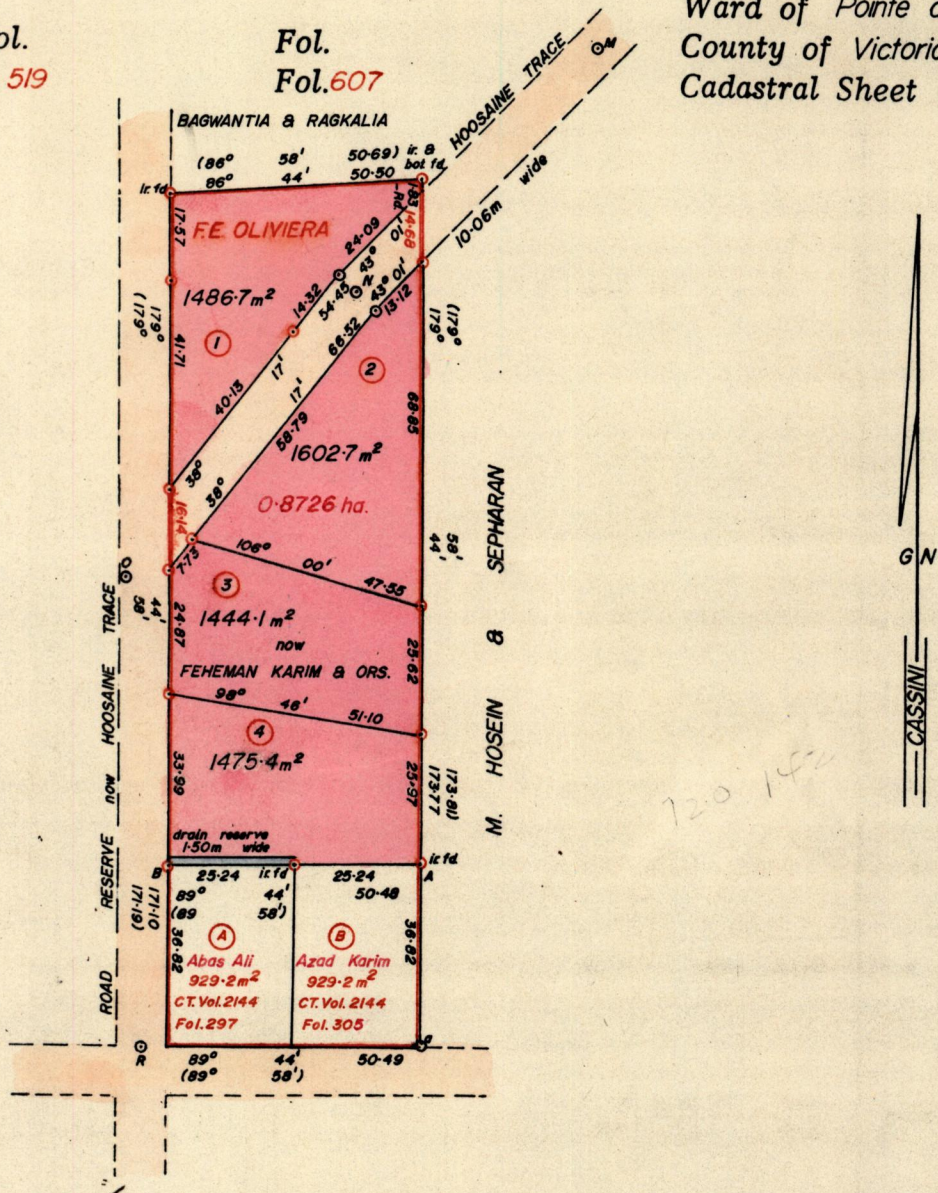
24157 1153

926

R.P.O. Vol.
C.T. Vol. 519

Fol.
Fol. 607

Ward of Pointe a Pierre
County of Victoria
Cadastral Sheet D.24.E. 54B
1/a



Approved

Abbas Ali
 Director of Surveys
 89-02-08

○ Denotes iron put except otherwise stated

Bearings are Cassini Grid based on solar observations.
Note: To obtain compass bearings add/subtract

SCALE 1 : 1500
minutes

Distances are in metres

PLAN of 4 Parcel of land coloured pink in the Ward of Pointe a Pierre
Containing together six thousand and eight point nine square metres.
Surveyed by me, with due authority, in September 1988.

I certify that I have complied with rule 76 under section 14(2)(d) of the
Land Surveyors' Ordinance 1952, and that this plan is correct.

Checked by *GR 3/2/89*

Entered Land Surveyor, Trinidad 29/11/1988

Original 720:142

