

1053

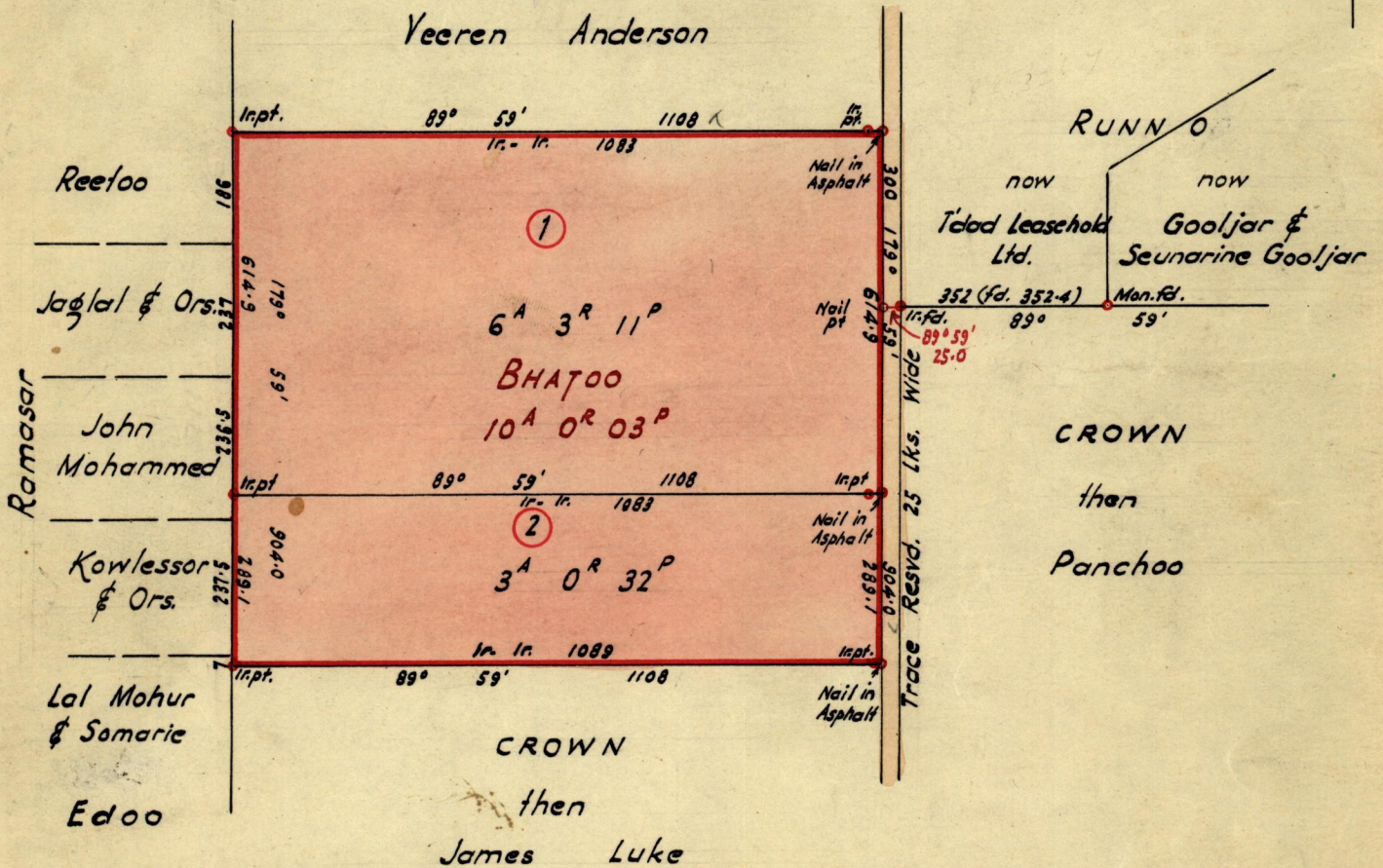
92

No 32144

R.P.O. Vol 12
C.T. Vol.

Fol. 367
Fol.

Ward of Savana Grande
County of Victoria
Cadastral Sheet G. 9.0



Bearings based on Solar Observation

Approved

R. H. G. Small

Director of Surveys

1.2.73

SCALE 1: 2500

Note: To obtain compass bearings add/subtract 1 minute

Distances are in Links

PLAN of ^{Two} Parcels of land coloured pink in the Ward of Savana Grande
Containing together Ten acres and three perches
Surveyed by me, with due authority, in Nov. 1972

I certify that I have complied with rule 76 under Section 14 (2) (d) of the Land
Surveyors' Ordinance 1952, and that this plan is correct.

Checked by *L. J. W. 1/2/73*

Land Surveyor, Trinidad

H. G. Small
18th November 1972

RPO Vol 12 Fol 367

C.L. STOUTE 2. print

Orig Survey Bk. 324 fol 96

Bhatoo

10-0-03.

186

237

236½

237½