

No

1153

367

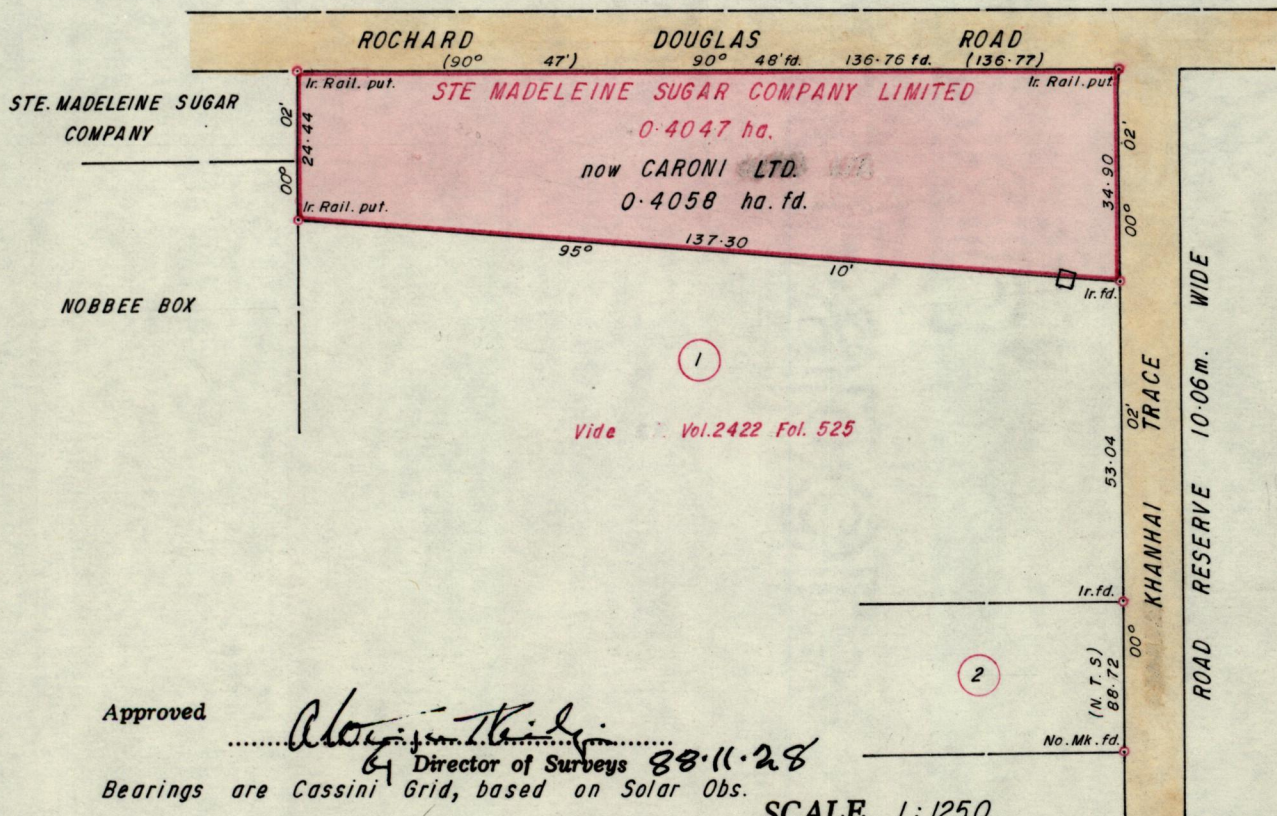
22086

R.P.O. Vol. 431
C.T. Vol. 602

Fol. 397
Fol. 19

Ward of Naparima.
County of Victoria. 64D
Cadastral Sheet G.14.F 2/a

To be returned to 3rd copy bk.



CASSINI G. N.

Approved *Alan J. Thibault*
Director of Surveys 88.11.28
Bearings are Cassini Grid, based on Solar Obs.

SCALE 1:1250

Note: To obtain compass bearings add/subtract minutes Distances are in metres.

PLAN of a Parcel of land coloured Pink in the Ward of Naparima.

Containing point four zero five eight hectares.

Surveyed by me, with due authority, in October 1988

I certify that I have complied with rule 76 under section 14(2)(d) of the Land Surveyors' Ordinance 1952, and that this plan is correct.

Checked by *GR 25/11/88*
Entered Land Surveyor, Trinidad *7th November 1988*

BK 722 :106

97

THE
GOSPEL
BY
THE
GOSPEL

