

No. 22084

1153

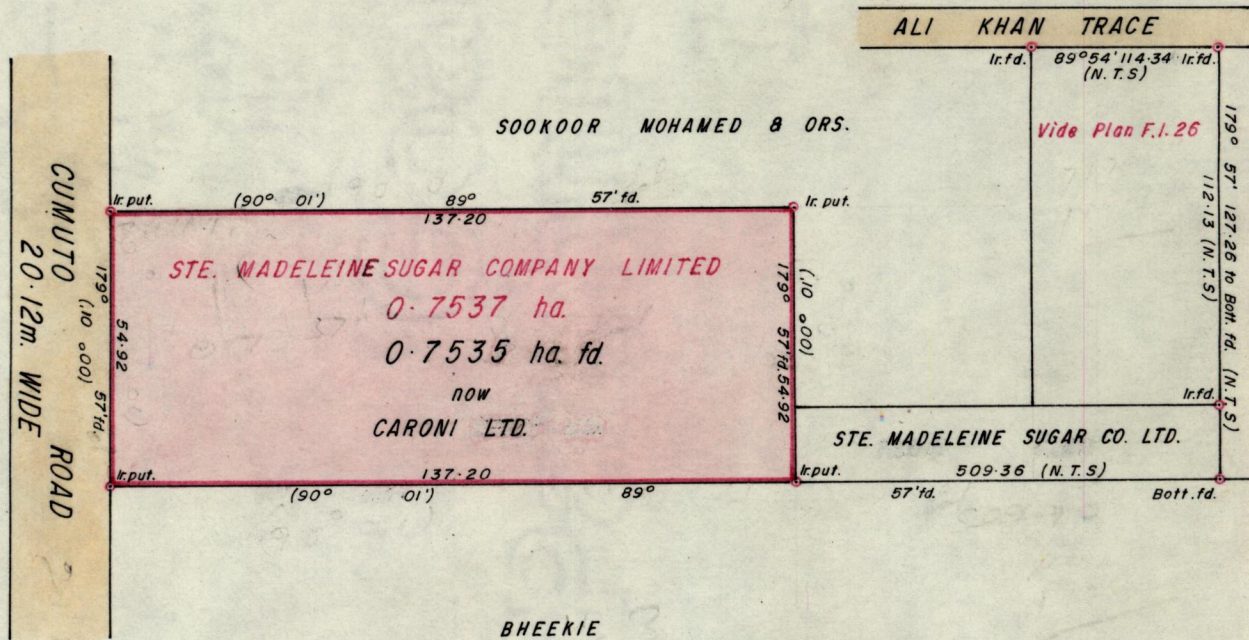
1165

R.P.O. Vol. 428  
C.T. Vol. 643

Fol. 601  
Fol. 75

Ward of Savana Grande  
County of Victoria. 64 E  
Cadastral Sheet G.14.D 1/a

CASSINI  
G. N.



Approved *Alonso Thiel*  
Director of Surveys 89.11.28  
Bearings are Cassini Grid, based on Solar Obs.

SCALE 1:1500

Note: To obtain compass bearings add/subtract minutes Distances are in metres.

PLAN of a Parcel of land coloured Pink in the Ward of Savana Grande.  
Containing point seven five three five hectares.

Surveyed by me, with due authority, in October 1988

I certify that I have complied with rule 76 under section 14(2)(d) of the  
Land Surveyors' Ordinance 1952, and that this plan is correct.

Checked by *CR 25/11/88*  
Entered ..... Land Surveyor, Trinidad ..... 7<sup>th</sup> November ..... 1988

Original 722. : 143