

No 22085

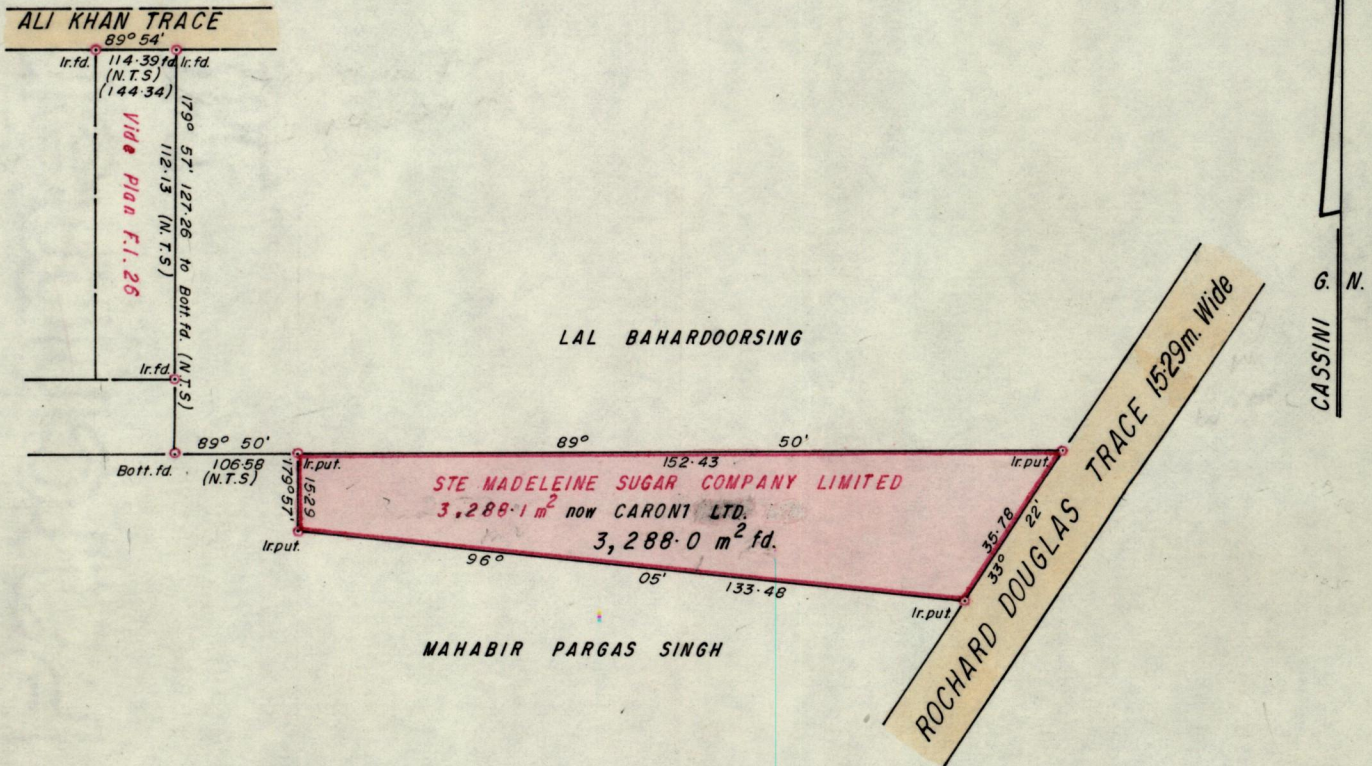
1053

864

R.P.O. Vol. 674
C.T. Vol. 949

Fol. 335
Fol. 303

Ward of Savana Grande
County of Victoria. 64 E.
Cadastral Sheet G.15.A 1/b



Approved Alouys Thibault
Director of Surveys 88.11.28
Bearings are Cassini Grid, based on Solar Obs.

SCALE 1:1500

Note: To obtain compass bearings add/subtract minutes Distances are in metres.

PLAN of a Parcel of land coloured Pink in the Ward of Savana Grande
Containing three thousand two hundred and eighty eight point zero square metres.
Surveyed by me, with due authority, in October 1988

I certify that I have complied with rule 76 under section 14(2)(d) of the
Land Surveyors' Ordinance 1952, and that this plan is correct.

Checked by GR 25/11/88 Juan
Entered Land Surveyor, Trinidad 7th November 1988

Original Survey Bk 780:71.

1023

804

