

No 18037

1053

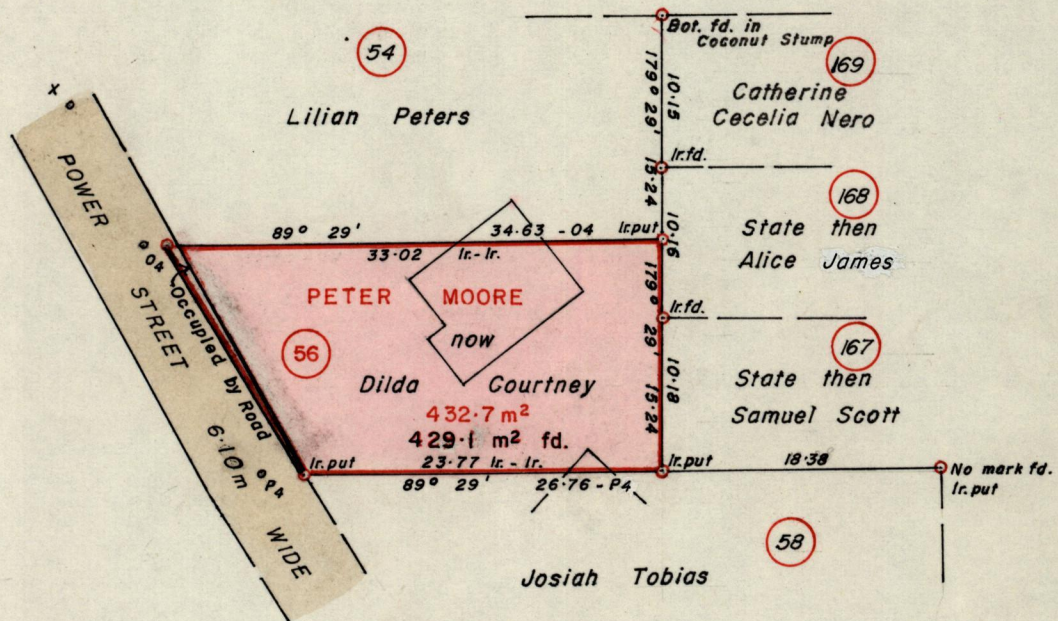
335

R.P.O. Vol. 541
C.T. Vol.

Fol. 89
Fol.

Ward of Toco
County of St. David
Cadastral Sheet C5E

PETIT TROU VILLAGE
PLAN L.B. 22



6.10m WIDE	47.82	= Q4	POWER STREET
	4.27	45.75 .83	
	2.44	30.69 = P4	
	2.44	30.48 3.66	
	2.07	13.56 = O4	
1.83	3.04 4.27		
	X	152° 50'	

Approved

Alonso Thiel
 Director of Surveys
 88.11.02

S.O. 22 / 54
F. Br. Vol. 52 Fol. 91

SCALE 1 - 500

Note: To obtain compass bearings add/~~subtract~~ 31 minutes Distances are in Metres

PLAN of a Parcel of land coloured pink in the Ward of Toco
 Containing four hundred and twenty nine point one square metres
 Surveyed by me, with due authority, in January 1985

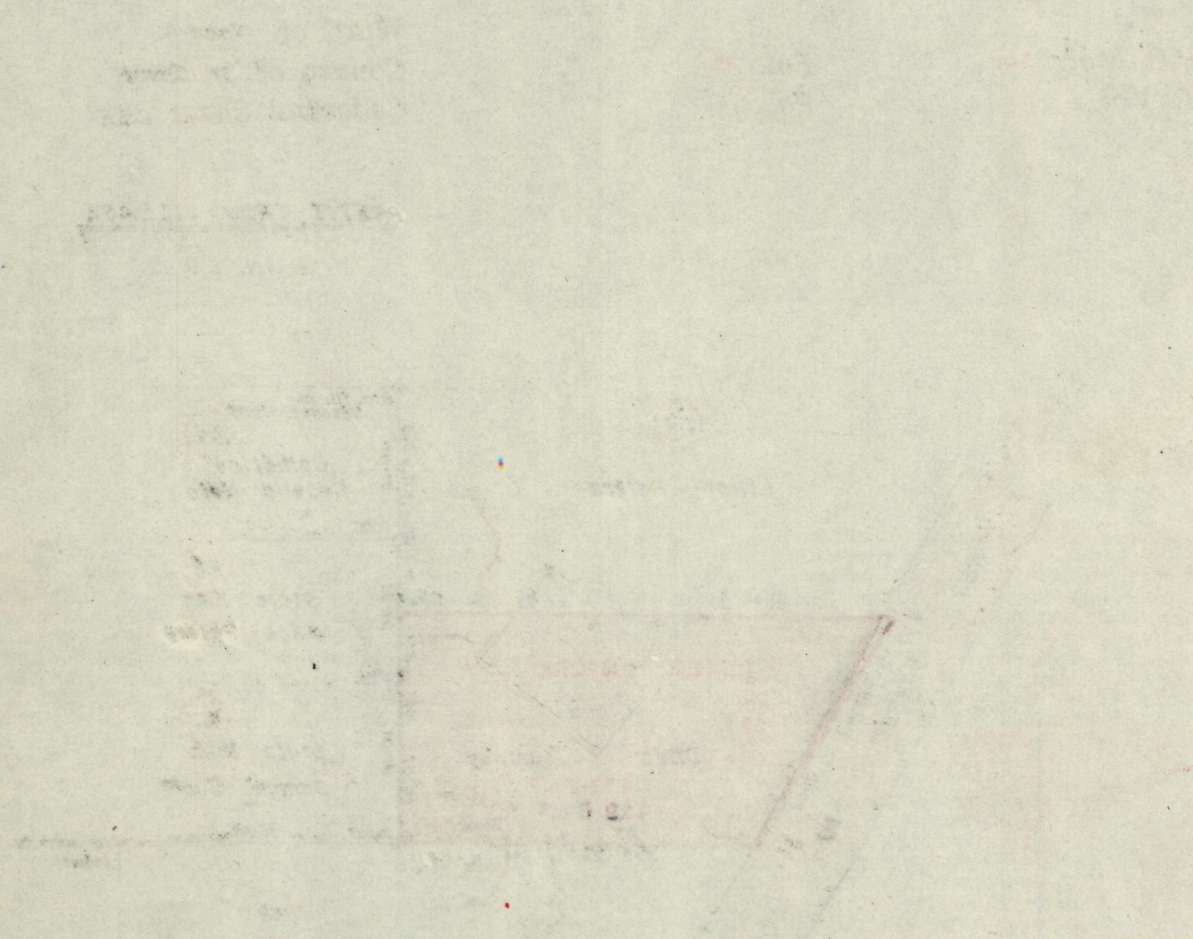
I certify that I have complied with rule 76 under section 14(2)(d) of the Land Surveyors' Ordinance 1952, and that this plan is correct.

Checked by *[Signature]* 25/10/88

Entered Land Surveyor, Trinidad 26th Sept. 1987

Original Survey Bk 582 Vol. 12

588



32.52 - Rd

32.52 - Rd