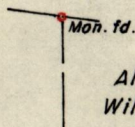
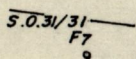
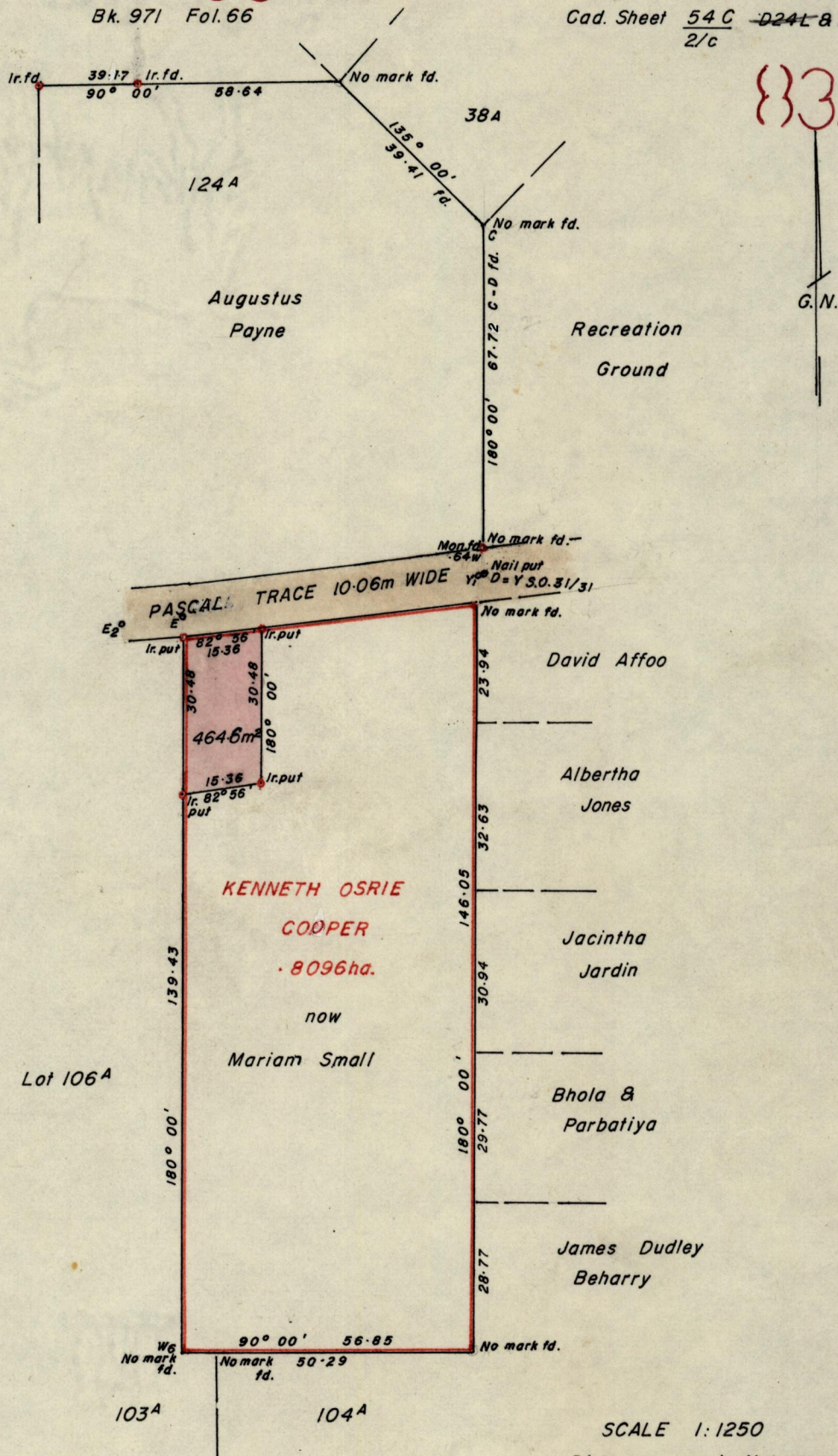


Bk. 971 Fol. 66

1053

332



E <sub>2</sub>	
70-32	= E <sub>2</sub> Nail put
58-55	= E
1.07	Y, S.O.31/31
D	260° 04'
D	
67.72	Nail put
63-61	.64 Mon. fd.
62-70	No mark fd.
C	180° 00'

E <sub>2</sub> -F <sub>7</sub>	275° 40'	102-63 (n.t.s)
F <sub>7</sub> -Mon.	185° 40'	5-09
W <sub>6</sub> -E	00° 00'	143-63

Approved

*Alouise Hill*  
Director of Surveys

88.11.02

SCALE 1:1250

Distances are in Metres

Note. To obtain compass bearings add 4 minutes.

Plan of a parcel of land coloured pink in the Ward of Charuma

Containing four hundred and sixty four point six square metres

Surveyed by me with due authority in December 1986

I certify that I have complied with rule 76 under section 14 (2)(d) of the Land Surveyors' Ordinance 1952, and that this plan is correct.

Checked by *[Signature]* 28/10/88

Entered on \_\_\_\_\_

*[Signature]*  
Land Surveyor, Trinidad

21<sup>st</sup> Jan. 1987

Original Survey Bk 671 Pl. 178

88

