

1053

760

No 41731

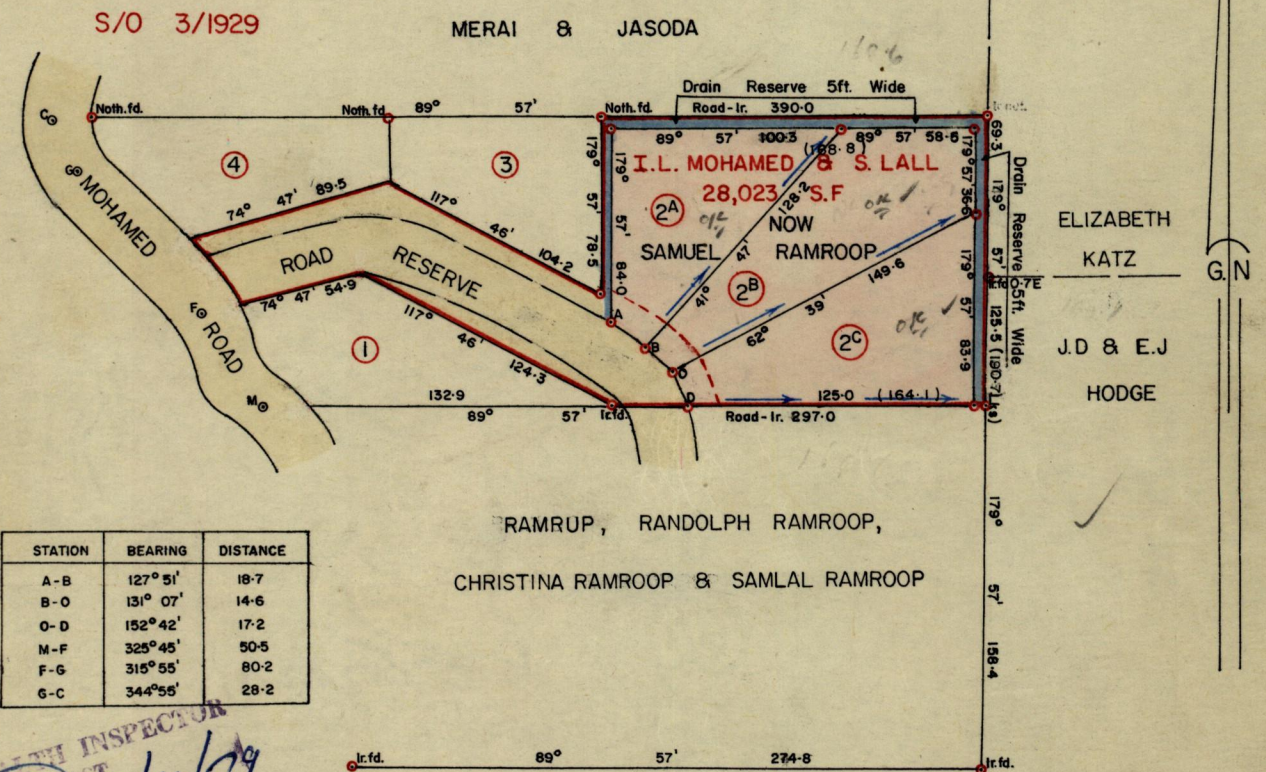
R.P.O. Vol. 679
C.T. Vol. 1234

Fol. 173
Fol. 131
BEFORE L. H. A., ST. GEORGE

Ward of Tacarigua
County of St. George
Cadastral Sheet B.18.I

APPROVED
SECRETARY TO THE CHIEF SURVEYOR'S OFFICE
L. H. A. ST. GEORGE
County Council, St. George

LOCAL HEALTH AUTHORITY
20/28
2 - NOV 1978
EAST ST. GEORGE



STATION	BEARING	DISTANCE
A - B	127° 51'	18-7
B - O	131° 07'	14-6
O - D	152° 42'	17-2
M - F	325° 45'	50-5
F - G	315° 55'	80-2
G - C	344° 55'	28-2

LOTS	AREA
2 ^A	5,411 S.F
2 ^B	6,438 S.F
2 ^C	6,532 S.F

SENIOR PUB HEALTH INSPECTOR
ST. GEORGE EAST
1/11/79

— Drainage Arrow
- - - 15ft. Building Line.

Approved

John Samuel
Director of Surveys

19.11.79
Denotes Iron put except where otherwise stated.

SCALE 1:1000

Note: To obtain compass bearings add/subtract 3 minutes Distances are in feet.

PLAN of 3 Parcelsof land coloured pink in the Ward of Tacarigua.

Containing together eighteen thousand, three hundred and eighty-one square feet.

Surveyed by me, with due authority, in July 1978

I certify that I have complied with rule 76 under Section 14 (2) (d) of the Land Surveyors' Ordinance 1952, and that this plan is correct.

Checked by *D. W. 16/11/79*

Hugo Somarsingh

Entered.....

Land Surveyor, Trinidad. 10th July 1979.

Original BK 641 fol. 122
See 903 fol. 102.