

11153

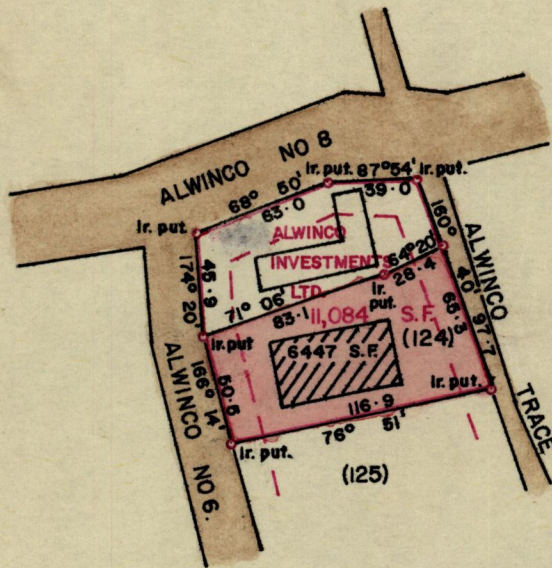
717

Nº 41275

R.P.O. Vol. 1415
C.T. Vol. 2276

Fol. 109
Fol. 157

Ward of St. Anns
County of St. George
Cadastral Sheet B.17.B&F



--- Building line 15' away from road.

Approved

John Samuel
Director of Surveys

14.9.75

SCALE 1:1000

Note: To obtain compass bearings add/subtract 1 minute Distances are in feet.

PLAN of a Parcel of land coloured pink in the Ward of St. Anns.

Containing six thousand four hundred and forty - seven square feet.

Surveyed by me, with due authority, in May and September 1975.

I certify that I have complied with rule 76 under Section 14 (2) (d) of the Land Surveyors' Ordinance 1952, and that this plan is correct.

Checked by *L.W. 13/9/75*

Paul Williams

Entered.....

Land Surveyor, Trinidad 22/6/1975

LANDS AND SURVEYS VAULT RECORDS

for original see plan ~~A.M. 61~~ 24/2/82

E H 1 0 6

