

No 40054

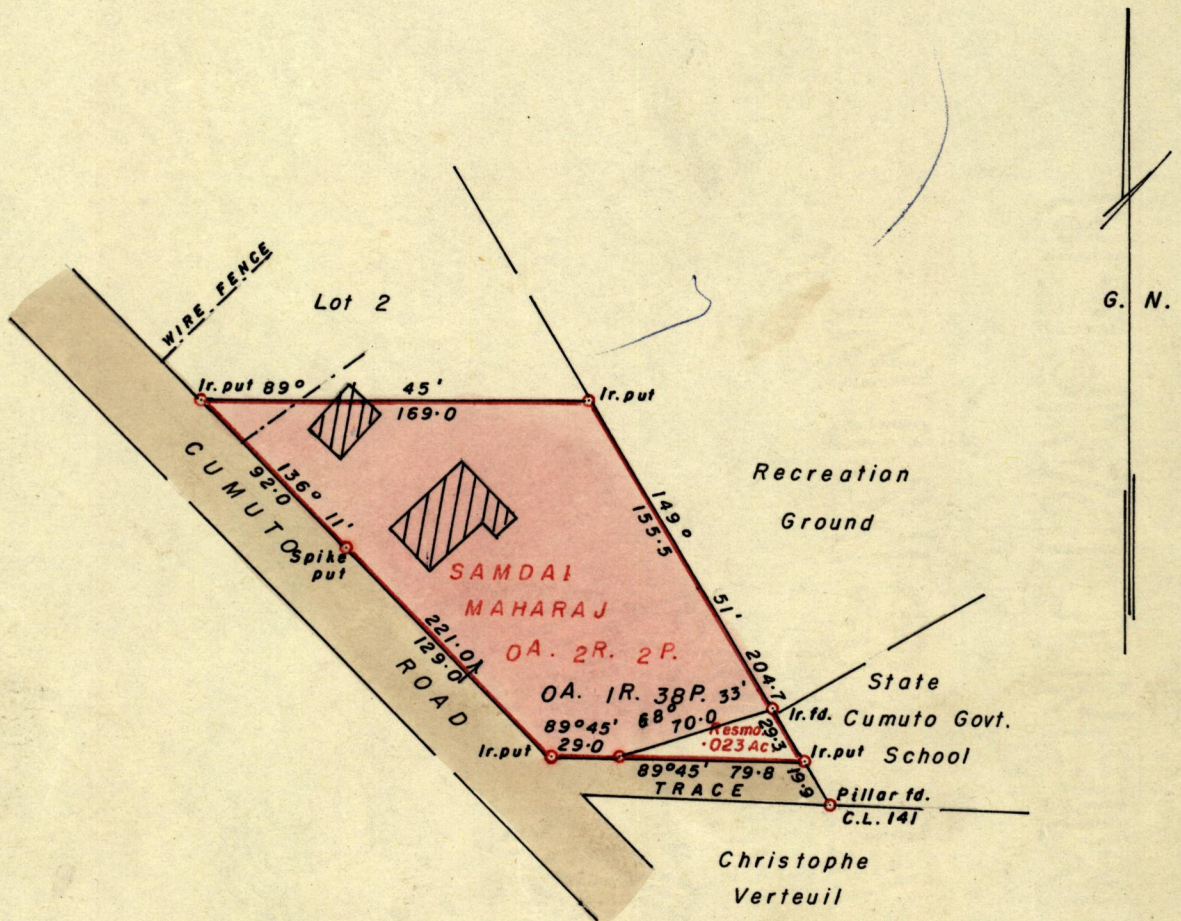
1053

613

R.P.O. Vol. 1  
C.T. Vol. 2175

Fol. 467.  
Fol. 33

Ward of Tamana  
County of St. Andrew  
Cadastral Sheet C.21.M.



Approved

*John Lawry*  
S.I.D. Director of Surveys

Bearings are based on solar observations. SCALE 1 - 1000.

Note: To obtain compass bearings add/subtract 15 minutes Distances are in feet.

PLAN of a Parcel of land coloured pink in the Ward of Tamana

Containing One rood and thirty-eight perches.

Surveyed by me, with due authority, in July 1978

I certify that I have complied with rule 76 under Section 14 (2) (d) of the Land Surveyors' Ordinance 1952, and that this plan is correct.

Checked by *R.F.W. 4/10/78*

*P. Douglas*

Entered.....

Land Surveyor, Trinidad. *Sep't 7<sup>th</sup> 19.78*



~~Sussex Bk.~~

Orig. Sleight. Bk. 166 fol 65

312

62

rusa

in

inde

mk