

11153

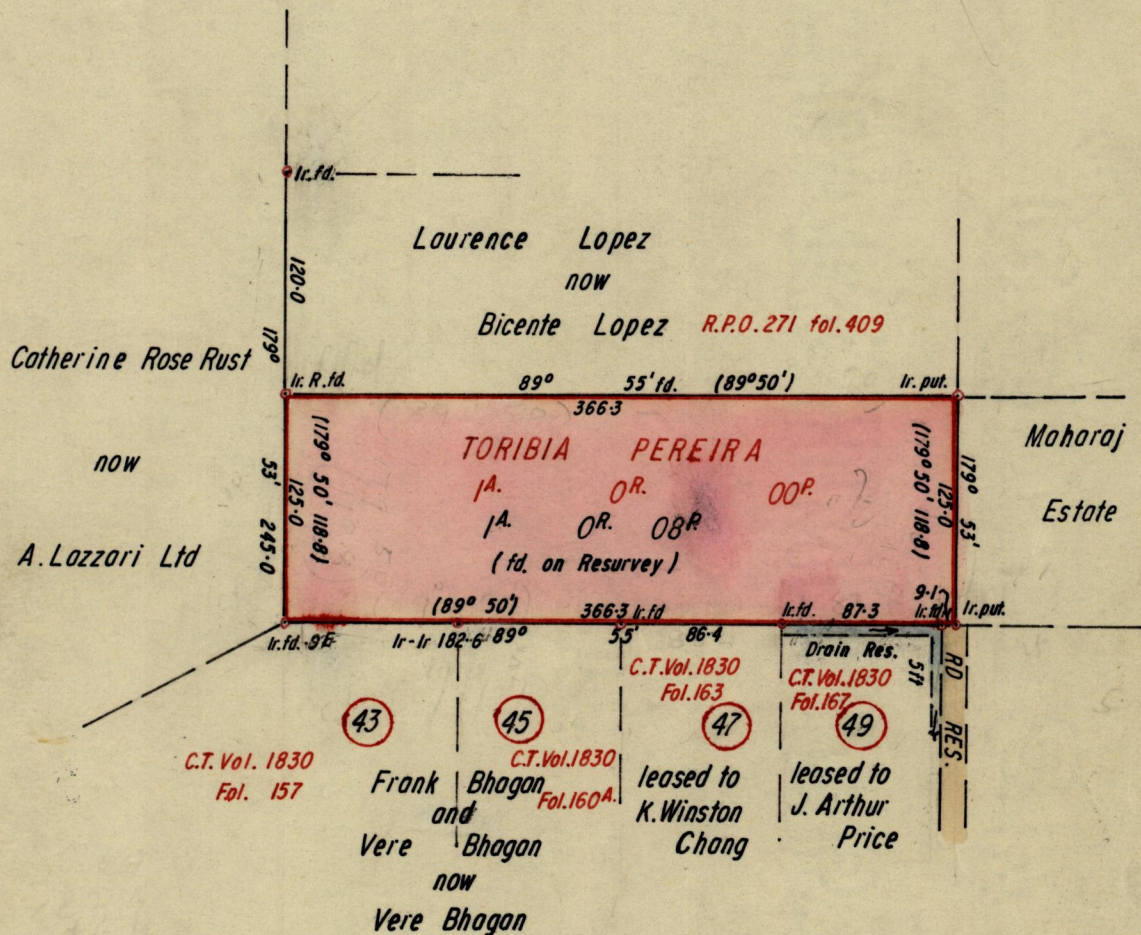
511

Nº 38244

R.P.O. Vol. 19
C.T. Vol.

Fol. 233
Fol.

Ward of Arima
County of St George
Cadastral Sheet B.19.P



Approved

[Signature]
Director of Surveys

SCALE 1:1250

Note: To obtain compass bearings add/subtract 10 minutes Distances are in feet
PLAN of a Parcel of land coloured pink in the Ward of Arima
Containing one acre and eight perches
Surveyed by me, with due authority, in June 1977

I certify that I have complied with rule 76 under Section 14 (2) (d) of the Land Surveyors' Ordinance 1952, and that this plan is correct.

Checked by A.L. 24.10.77

[Signature]
Land Surveyor, Trinidad July 18th 19.77

Entered

E. Travis ELOI

original sk 5:172

820

PAGE 71

