

10153

L. & S.—54

467

Nº 37178

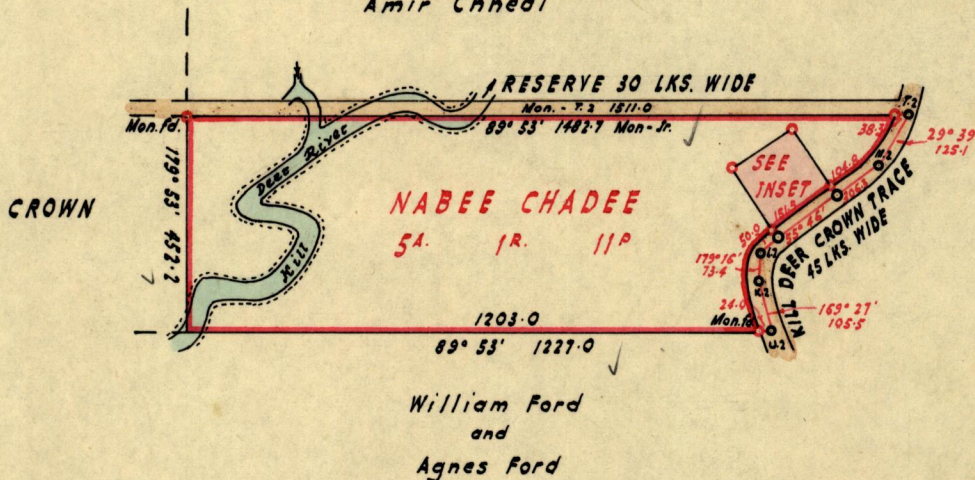
R.P.O. Vol. 693
C.T. Vol.

Fol. 251
Fol.

Ward of Charuma
County of Nariva
Cadastral Sheet E. 21, E & I

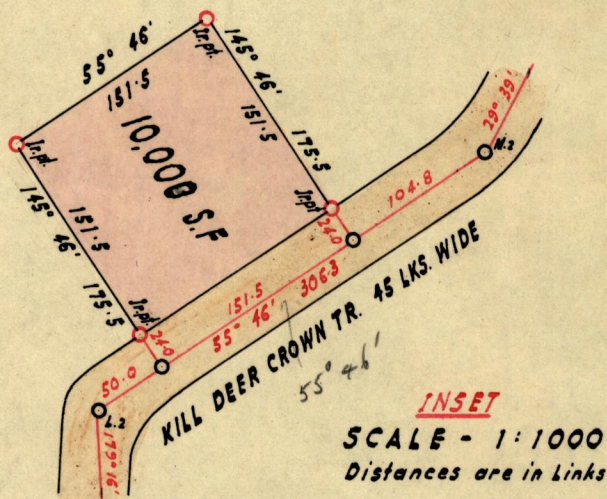
GN

Pet'd for by
Amir Chhedi



Nabee Chadee

Nabee Chadee



Approved

John Samuel
Director of Surveys

24. v. 77.

SCALE - 4 Chains = 1 Inch

Note: To obtain compass bearings add ~~subtract~~ 7 minutes Distances are in Links

PLAN of a Parcel of land coloured Pink in the Ward of Charuma

Containing Ten Thousand ~~10000~~ ~~34~~ ~~71~~

Surveyed by me, with due authority, in November 1976

I certify that I have complied with rule 76 under Section 14 (2) (d) of the Land Surveyors' Ordinance 1952, and that this plan is correct.

Checked by *L. V. U. 18/2/77*

S. Balliecharan

Entered.....

Land Surveyor, Trinidad..... 6/12/1976

2

Original bk. 632 fol. 174