

10153

L. & S.—54

449

No 35701

R.P.O. Vol.
C.T. Vol. 1054

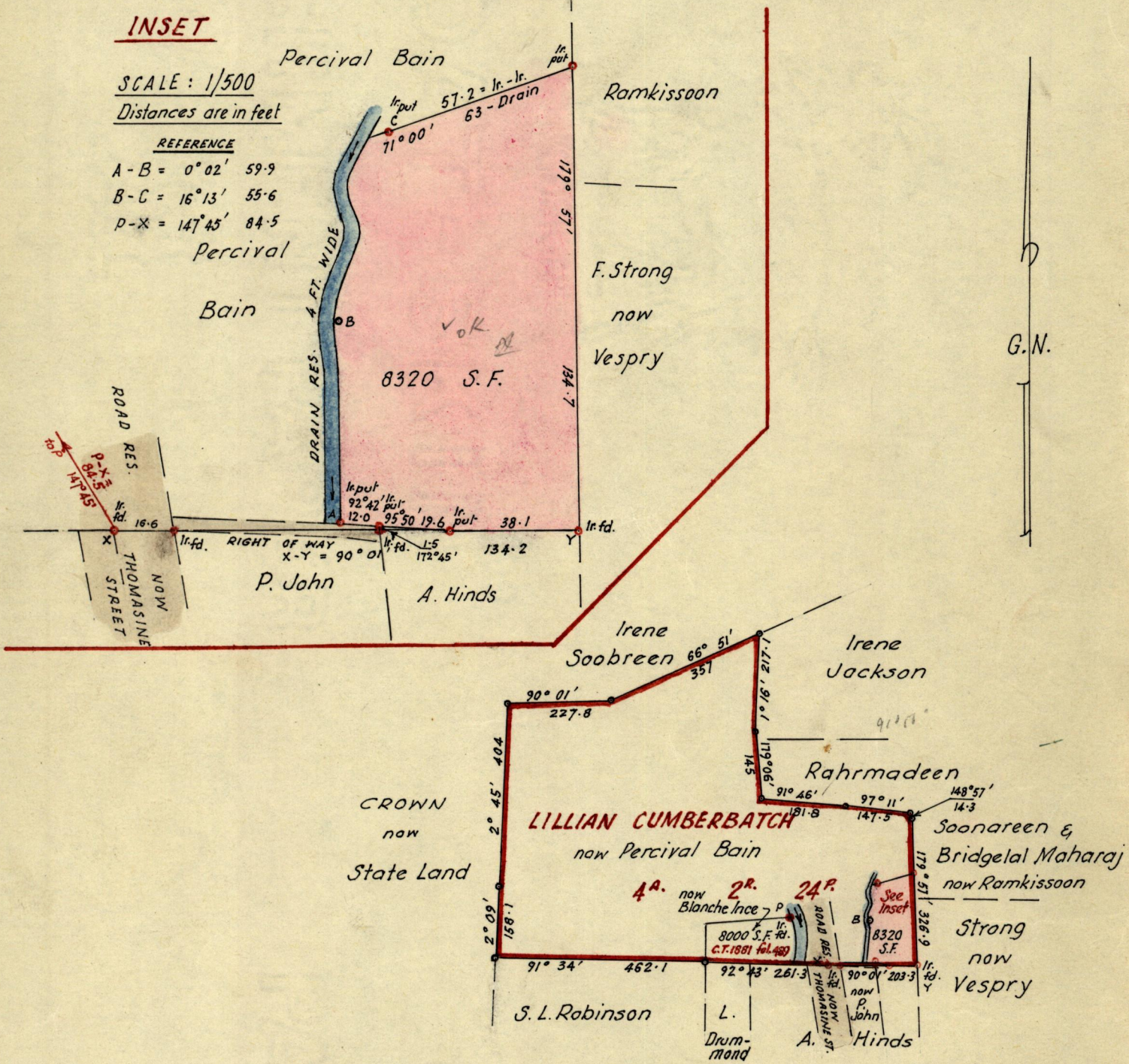
Fol. 119

Ward of St. Ann's
County of St. George
Cadastral Sheet A. 20. L.

INSET

SCALE: 1/500
Distances are in feet

REFERENCE	
A-B =	0° 02' 59.9
B-C =	16° 13' 55.6
P-X =	147° 45' 84.5



Approved

[Signature]
Director of Surveys

13.1.77.

SCALE: 1/2500

Note: To obtain compass bearings ~~add~~ subtract 1 minutes Distances are in links

PLAN of a Parcel of land coloured pink in the Ward of St. Ann's
Containing eight thousand, three hundred & twenty square feet
Surveyed by me, with due authority, in June 1972

I certify that I have complied with rule 76 under Section 14 (2) (d) of the Land
Surveyors' Ordinance 1952, and that this plan is correct.

Checked by *L.J.W. 13/1/76*

Entered.....

J.R. Gardine
Land Surveyor, Trinidad

31st Dec 1976

LANDS AND SURVEYS VAULT RECORDS

Original bk. 915 fol 467