

Nº 36684

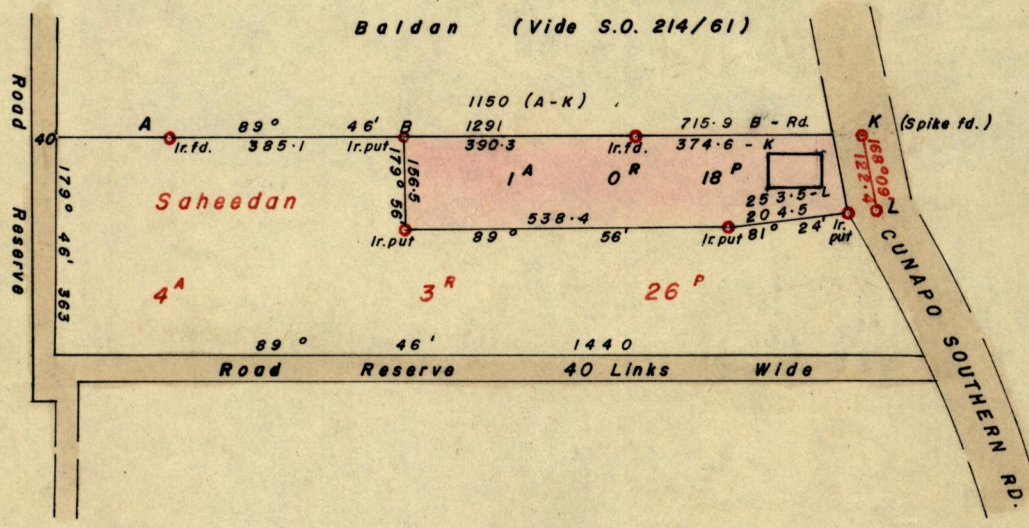
1053

447

R.P.O. Vol. 156
C.T. Vol. 1368

Fol. 285
Fol. 463

Ward of Turure
County of St. Andrew
Cadastral Sheet E. 12. F



Approved

Belmont Samms
Director of Surveys

12.1.77.

SCALE 1 / 2500

Note: To obtain compass bearings add ~~subtract~~ 14 minutes Distances are in links

PLAN of a Parcel of land coloured pink in the Ward of Turure

Containing one acre, eighteen perches.

Surveyed by me, with due authority, in December 1973

I certify that I have complied with rule 76 under Section 14 (2) (d) of the Land Surveyors' Ordinance 1952, and that this plan is correct.

Checked by *L.F.W. 12/1/77*

Cecil Herbert

Entered.....

Land Surveyor, Trinidad..... 12th January 1977.

Original Survey BK 187 folio 19

380

38