

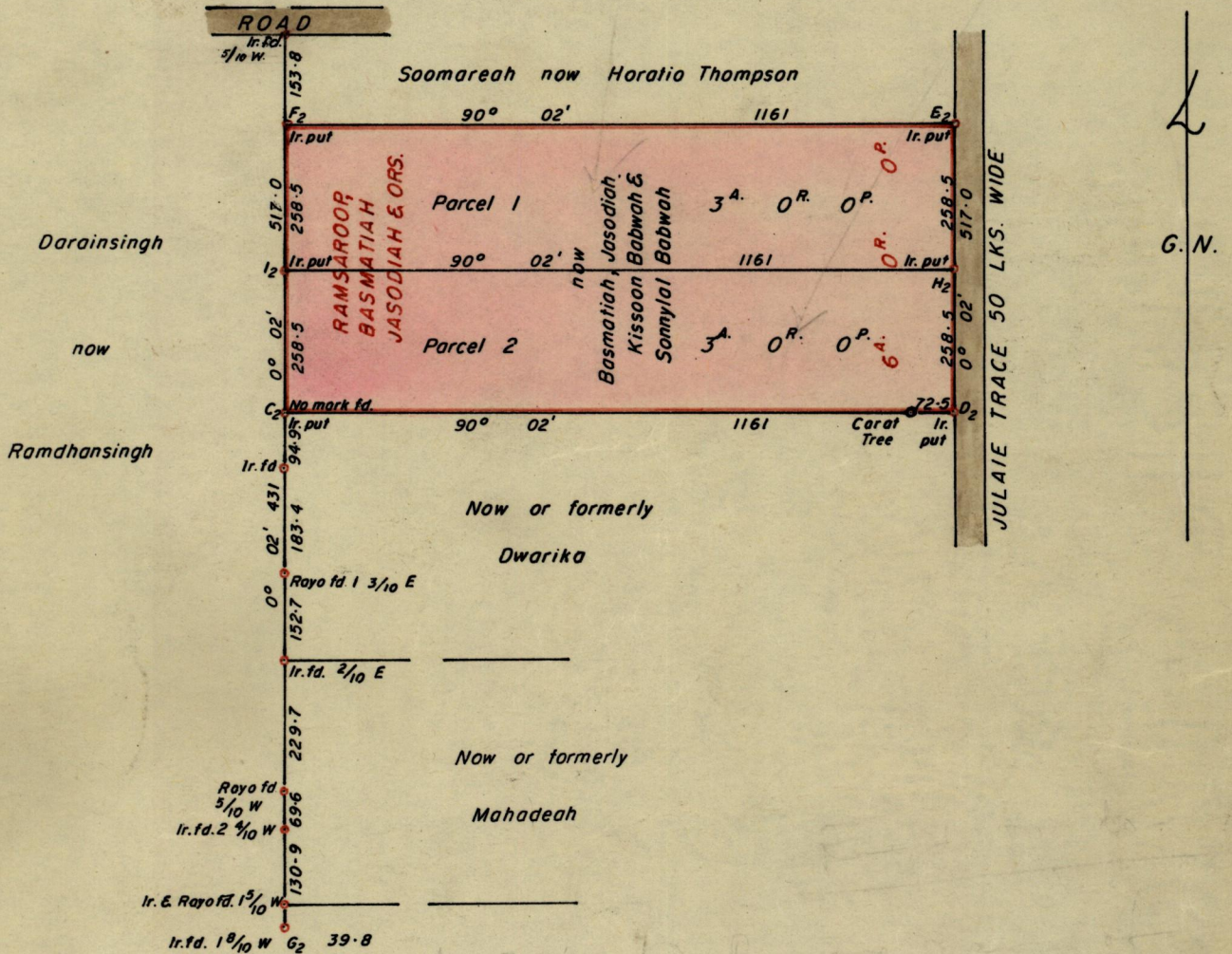
No 33390

1053

R.P.O. Vol. 196
C.T. Vol. 1506

Fol. 499
Fol. 461

Ward of Siparia
County of St. Patrick
Cadastral Sheet G. 18. C.



Approved

[Signature]
Director of Surveys
J. V. 75

SCALE 1 - 2500

Note: To obtain compass bearings ~~add~~/subtract 2 minutes Distances are in links
PLAN of a Parcel of land coloured pink in the Ward of Siparia
Containing together Six acres

Surveyed by me, with due authority, in August 1971

I certify that I have complied with rule 76 under Section 14 (2) (d) of the Land Surveyors' Ordinance 1952, and that this plan is correct.

Checked by *[Signature]*

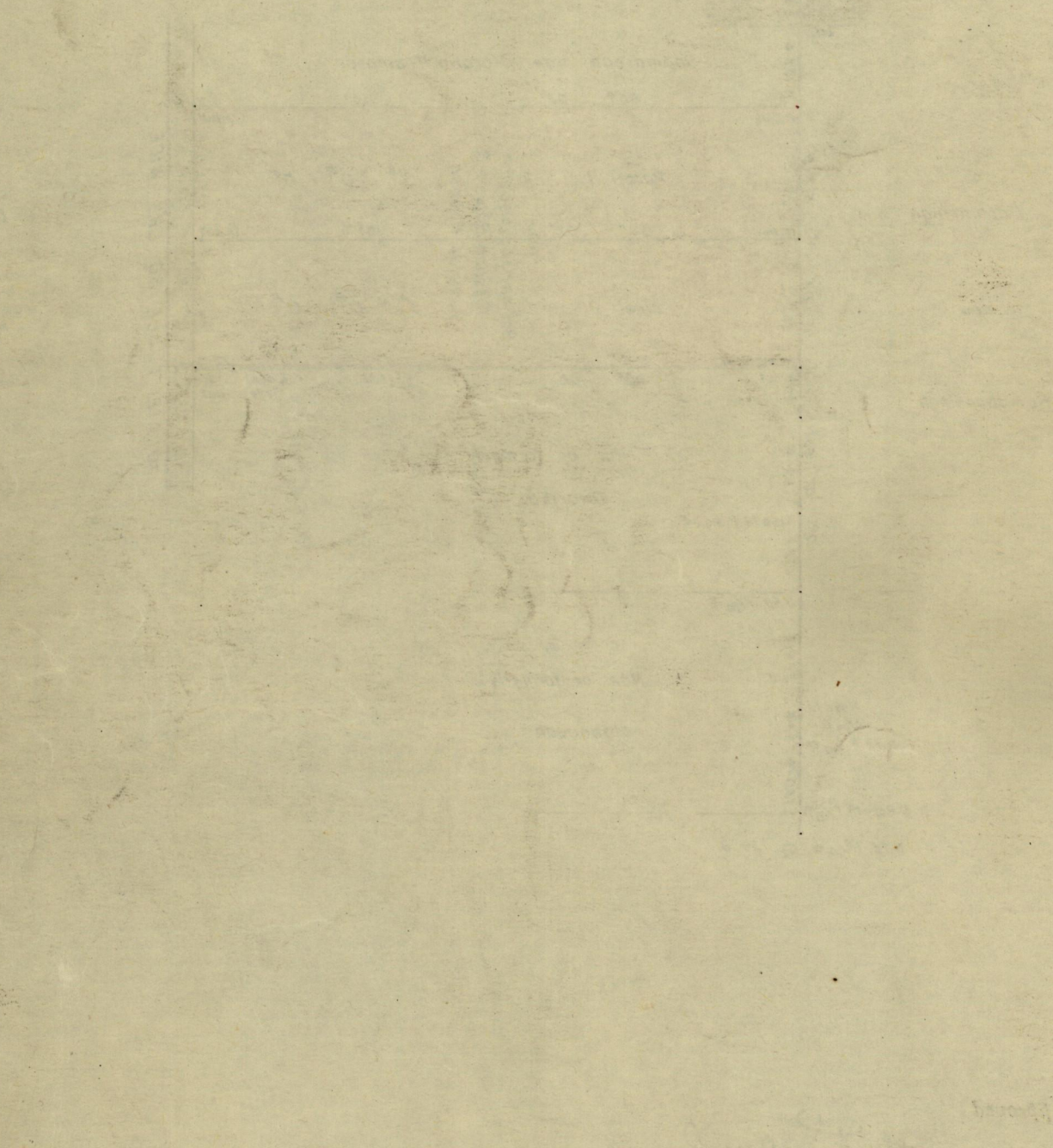
Entered

[Signature]
Land Surveyor, Trinidad 14 Jan'y, 1975

Original Survey Bk. 408 fol 219

33300

Word of
County of
Circuit Court
R.P.O. Vol
C.T. Vol



SCALE
The Word of
The Word of
The Word of
The Word of
The Word of