

287

L. and S.—53

10153

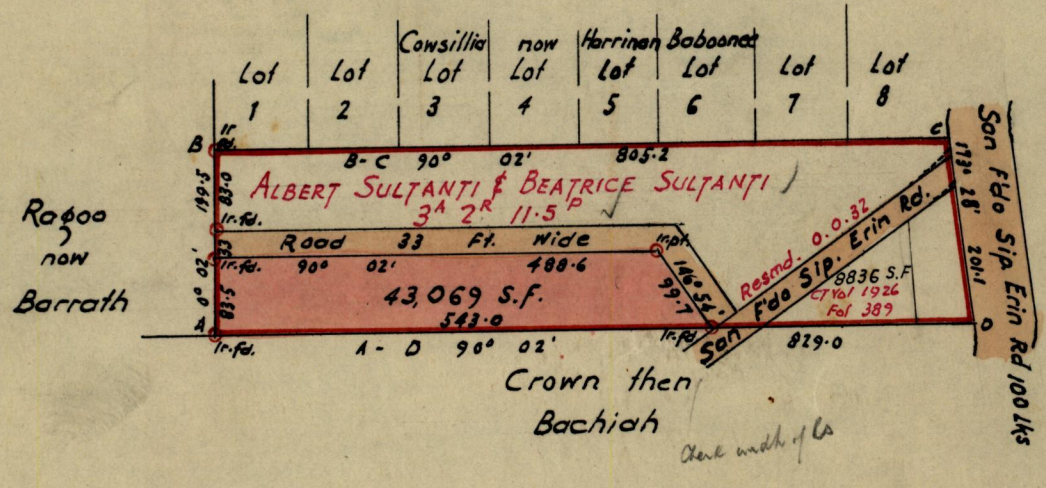
No 56217

Cadastral Sheet G. 13. F.

Ward of Siparia

County of St. Patrick

R.P.O Vol. 63 ✓ Fol. 343 ✓
C.T. Vol. 1073 ✓ Fol. 435 ✓



Approved

John Samuel
Director of Surveys
16.12.74.

SCALE 1:2500

Note: To obtain compass bearing subtract 2 minutes Distances are in Ft

PLAN of a Parcel of land coloured pink in the Ward of Siparia
Containing Forty three thousand and sixty nine sq ft.
Surveyed by me, with the authority, in July 1974 for
I certify that I have complied with Rule 76 under Sec. 14(2)(d) of the Land
Surveyors Ord. 1952, and that this plan is correct.

Checked: *L.H. 16/12/74* *R. Alliecharam*

Land Surveyor, Trinidad 20th August 1974

G.P., Tr./To.—2378—10,000—10/72

LANDS AND SURVEYS VAULT RECORDS

585

(2)

Original bk. 856 fol. 93

1001

