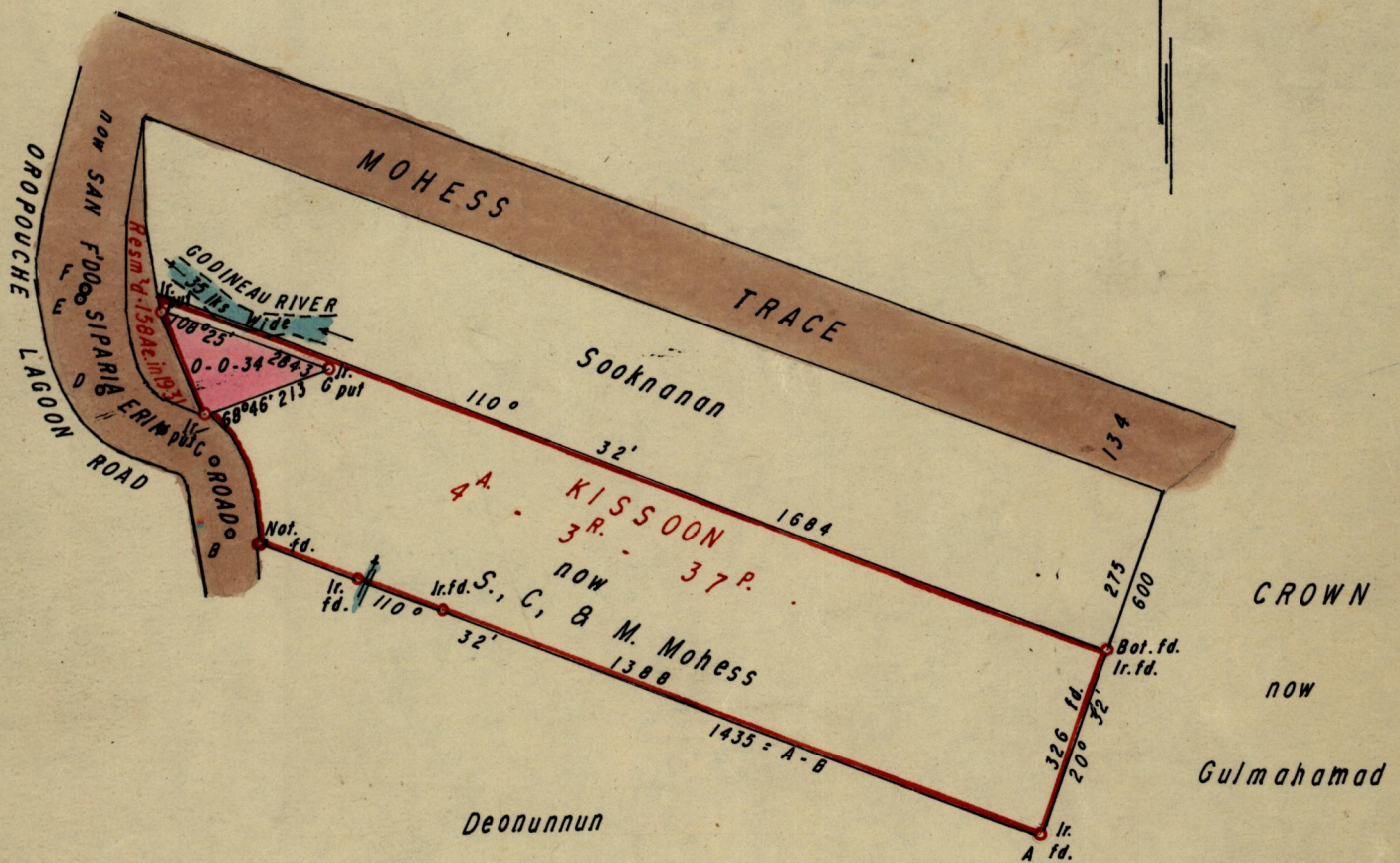


R.P.O. Vol. 59 Fol. 527

C.T. Vol. 2019 Fol. 95

1053

G. N.



Approved

*L. W. F. and*

Director of Surveys

31.7.74

Note: To obtain compass bearings  $\frac{744}{\text{subtract}}$  2 minutes

SCALE: 1 / 2500  
Distances are in links

PLAN of a Parcel of Land coloured Pink in the Ward of Siparia  
Containing Thirty - Four Perches

Surveyed by me, with due authority, in December 1949

I certify that I have complied with Rule 76 under Sec. 14 (2)(d) of the Land Surveyors Ordinance 1952, and that this plan is correct.

Checked by *L. W. F. 26/7/74*

*Lance Pierre*

Entered on

Land Surveyor, Trinidad 3rd February 1950

G.P., Tr./To.

Original bk 892 fol. 29