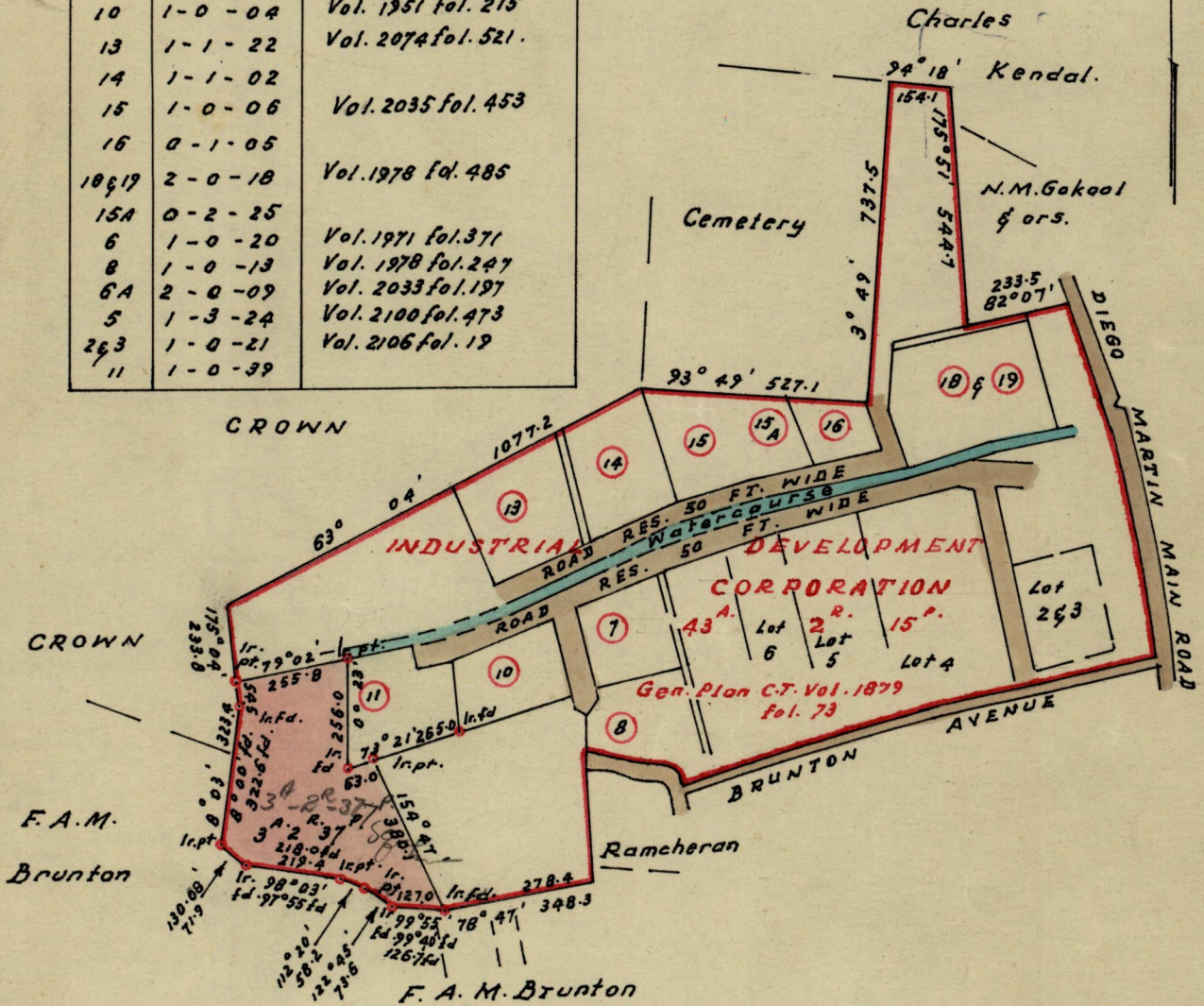


No 34544

R.P.O. Vol. 1822 Fol. 309
C.T. Vol. Fol.

Ward of Diego Martin
County of St. George
Cadastral Sheet A.14.G & K.

Lots	REFERENCE	
	Acreege	Certificate of Title
7	0-3-30	Vol. 2039 fol. 231
10	1-0-04	Vol. 1951 fol. 215
13	1-1-22	Vol. 2074 fol. 521
14	1-1-02	
15	1-0-06	Vol. 2035 fol. 453
16	0-1-05	
18 & 19	2-0-18	Vol. 1978 fol. 485
15A	0-2-25	
6	1-0-20	Vol. 1971 fol. 371
8	1-0-13	Vol. 1978 fol. 247
6A	2-0-09	Vol. 2033 fol. 197
5	1-3-24	Vol. 2100 fol. 473
2 & 3	1-0-21	Vol. 2106 fol. 19
11	1-0-39	



Approved

L. H. Farrell

Director of Surveys

16. 7. 74

SCALE ~ 1:5000

Note: To obtain compass bearings ~~add~~/subtract 4 minutes Distances are in feet.

PLAN of a Parcel of land coloured pink in the Ward of Diego Martin
Containing three acres two roods and thirty seven perches
Surveyed by me, with due authority, in June 1974

I certify that I have complied with rule 76 under Section 14 (2) (d) of the Land
Surveyors' Ordinance 1952, and that this plan is correct.

Checked by *L. H. Farrell*

J. P. Gardiner
Land Surveyor, Trinidad 24th June 1974

Entered

18-2-21

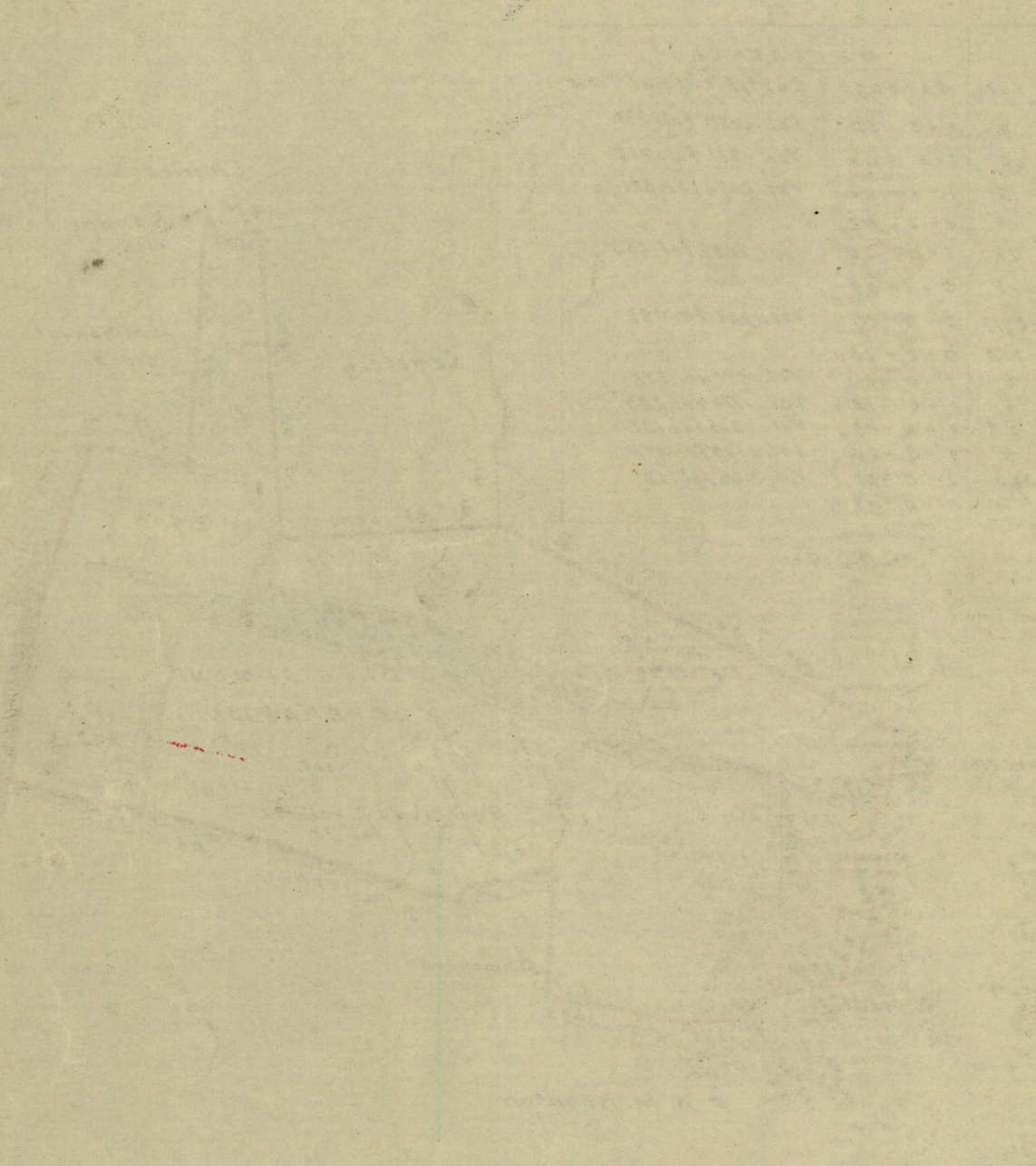
1000

1825

Ward of
County of
Dublin

Vol.
Vol.

R.O. Vol.
C.T. Vol.



This is a plan of a portion of land situated in the Ward of ...
 containing ...
 The land is bounded by ...
 and is divided into ...
 The plan is drawn to a scale of ...
 and is intended to show the boundaries and divisions of the land.
 The plan is drawn by ...
 and is intended to show the boundaries and divisions of the land.
 The plan is drawn to a scale of ...
 and is intended to show the boundaries and divisions of the land.