

145

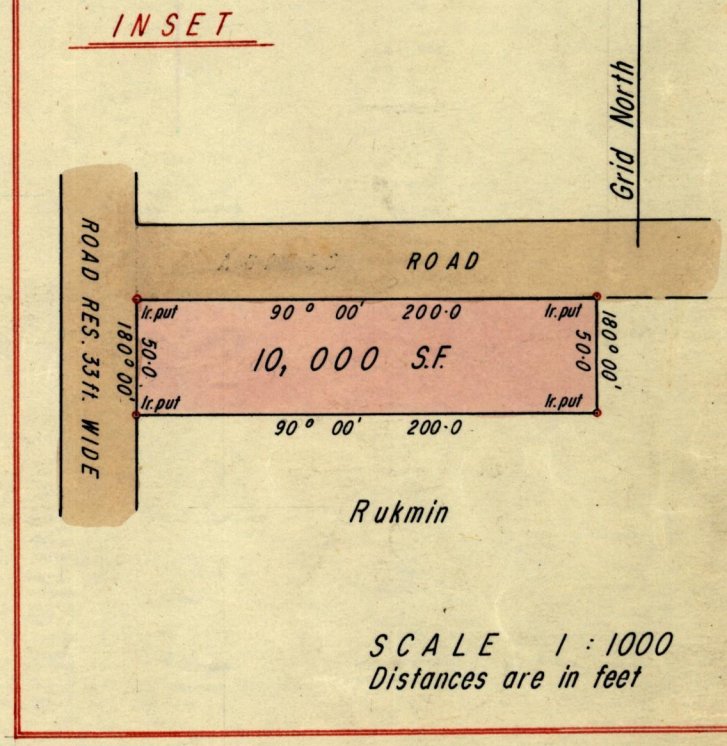
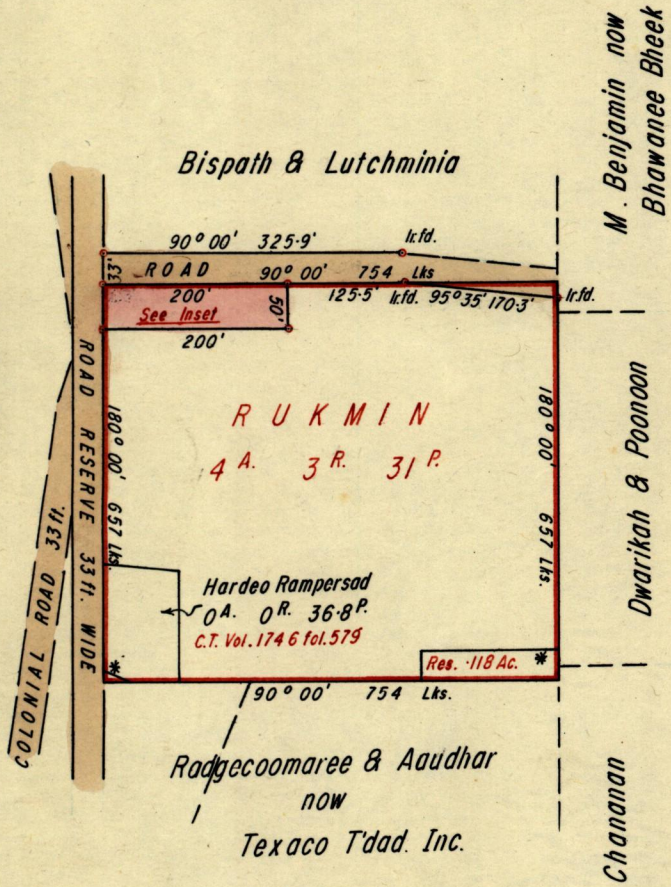
No 33433

1053

R.P.O. Vol. 131
C.T. Vol. 1430

Fol. 85
Fol. 315

Ward of Naparima
County of Victoria
Cadastral Sheet G.14.A & B



SCALE 1 : 1000
Distances are in feet

Approved

P.A. Ganell

Director of Surveys
5.7.73

SCALE 1 : 2500

Note : To obtain compass bearings add/subtract 0 minutes Distances are in links & feet
PLAN of a Parcel of land coloured pink in the Ward of Naparima
Containing ten thousand sq. feet

Surveyed by me, with due authority, in Dec. 1972

I certify that I have complied with rule 76 under Section 14 (2) (d) of the Land Surveyors' Ordinance 1952, and that this plan is correct.

Checked by *L.W. 3/7/73*

P. Alliecharan

Entered

Land Surveyor, Trinidad *2nd June 1973*

Original bk 892 fol 116

Word of
Count of
County of

Vol
Vol

Vol
Vol