

No 32503

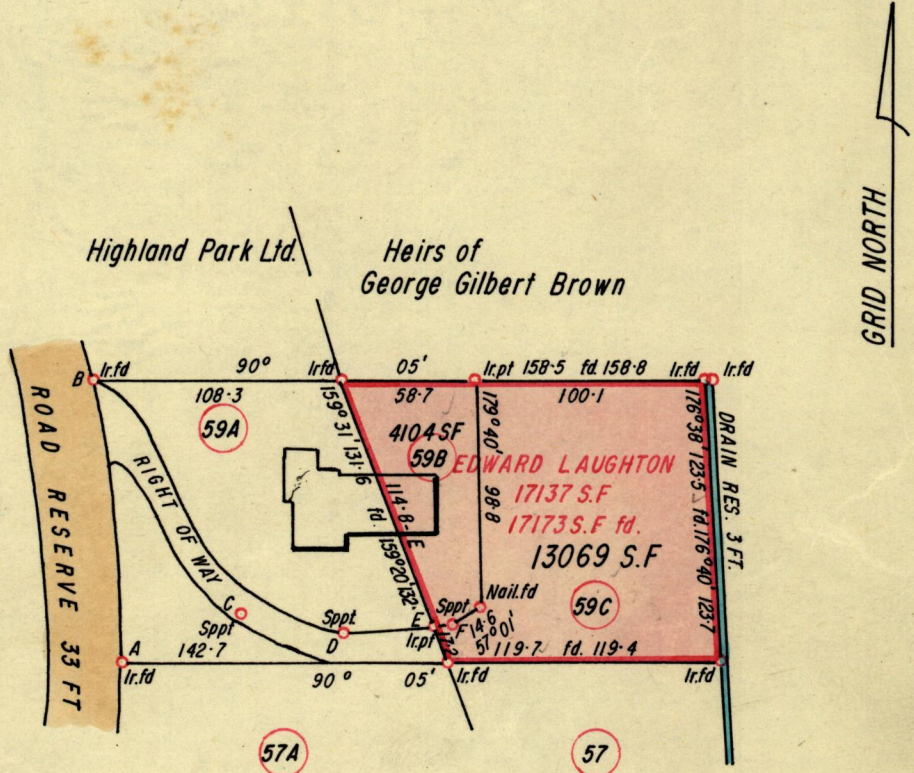
11153

102

R.P.O. Vol
C.T. Vol. 1983

Fol.
Fol. 43

Ward of Diego Martin
County of St. George
Cadastral Sheet A 19 C



STA	BEARING	DIST
A - B	354° 22'	124.3
B - C	147° 50'	121.3
C - D	101° 32'	45.6
D - E	84° 34'	39.9
E - F	84° 34'	6.6

Approved

L. J. Daniel

Director of Surveys
2.3.73

SCALE 1:1000

Note: To obtain compass bearings ~~add~~ subtract 5

minutes

Distances are in feet

PLAN of 2 Parcelsof land coloured pink in the Ward of Diego Martin

Containing together Seventeen thousand one hundred and seventy three square feet

Surveyed by me, with due authority, in February 1973

I certify that I have complied with rule 76 under Section 14 (2) (d) of the Land Surveyors' Ordinance 1952, and that this plan is correct.

Checked by *L. J. D. 2/4/73*

E. Laughton

Entered

Land Surveyor, Trinidad

26.2.1973

4 prints Hand

EDWARD LAUGHTON

1053

22-8288-57

W. H. ...
City of ...
Central ...

101
102

101
102

