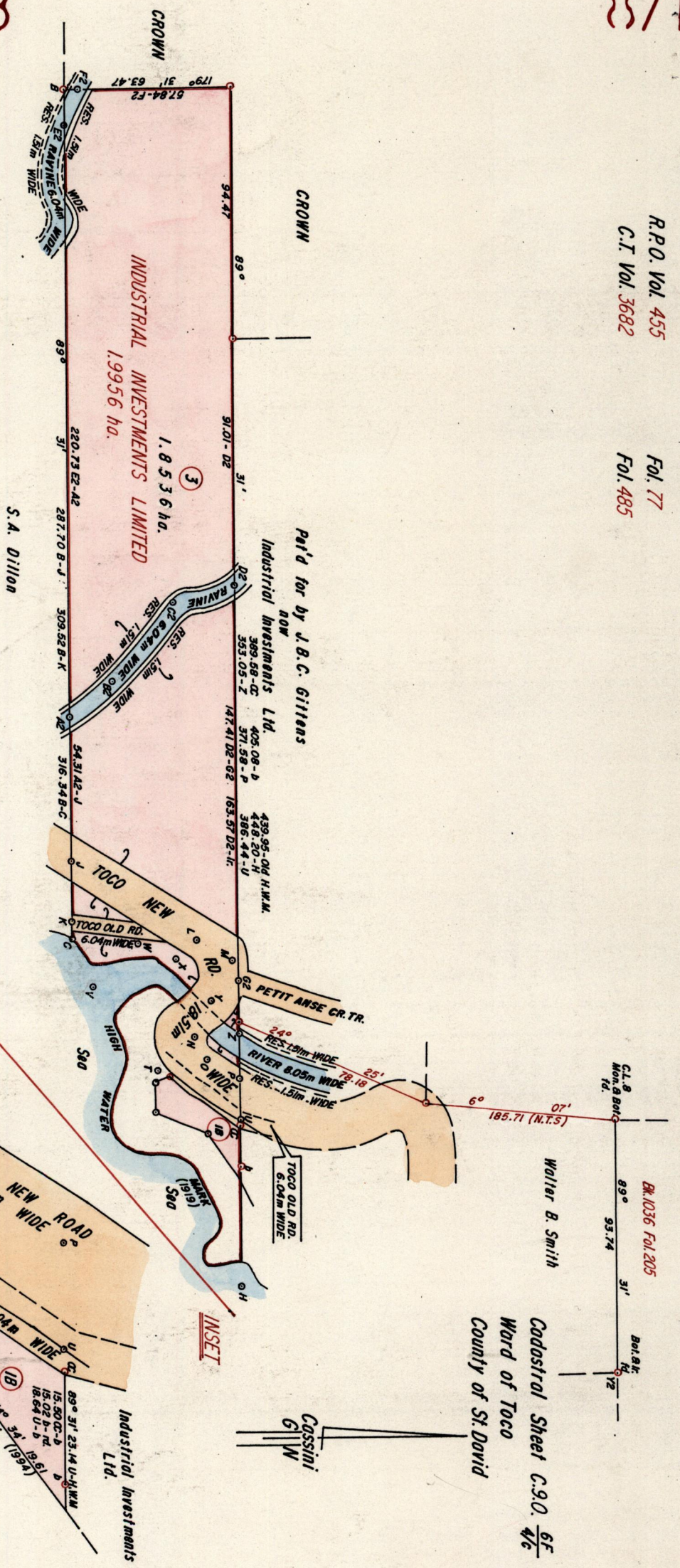


Cadastral Sheet C.9.0. $\frac{6F}{4c}$
Ward of Toco
County of St David



Approved *S.A. Dillon*
Director of Surveys

Bearings are based on solar observations
Distances are in Metres
Denotes Iron put except otherwise stated

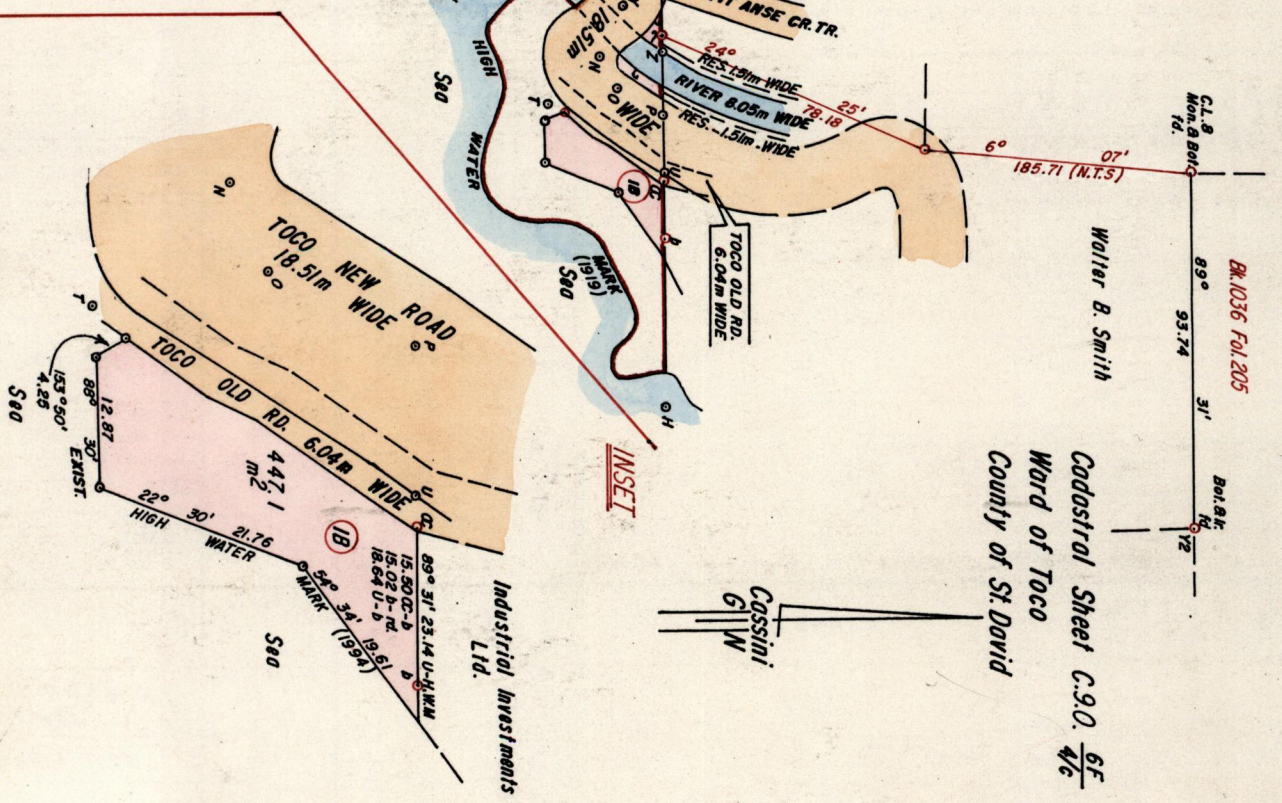
SCALE 1/2000

PLAN of 2 Parcels of land coloured pink in the Ward of Toco
Containing together one point eight nine eight three hectares
Surveyed by me with due authority in July 1994

I certify that I have complied with rule 76 under section 14(2)(d) of the
Land Surveys Ordinance 1952 and that this plan is correct.

Checked by *S.A. Dillon* 1/1/96
S.A. Dillon

Entered . . . Land Surveyor, Trinidad & Tobago. 25/5/95 19



SCALE 1/750
Distances are in Metres

