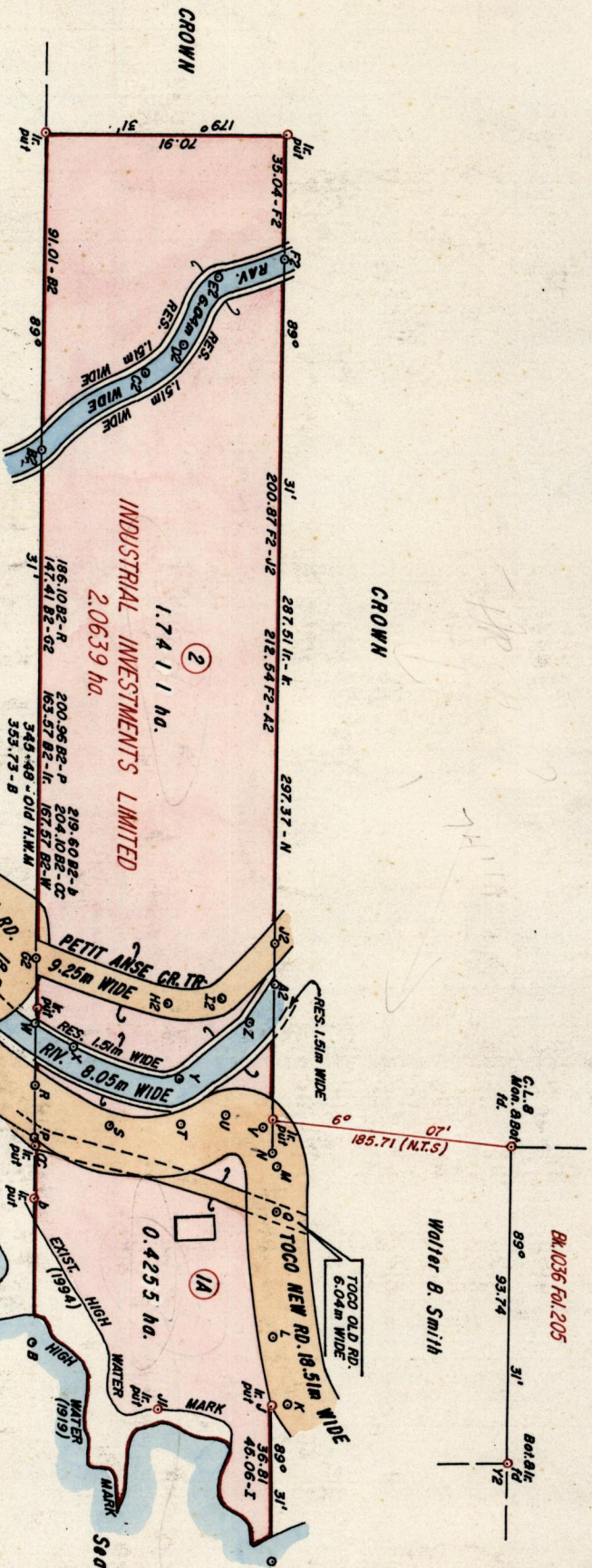


R.P.O. Vol. 460
C.T. Vol. 3682

Fol. 303
Fol. 473

Cadastral Sheet C.9.0. 6/E
Ward of Toco
County of St. David



S. A. Howard
Industrial Investments Ltd.
C.T. 3682 Fol. 485

Approved
Director of Surveys
Bearings are based on solar observations

SCALE 1:2000
Distances are in Metres

Plan of 2 Parcels of land coloured pink in the Ward of Toco
Containing together two point one six six six hectares
Surveyed by me with due authority in July 1994

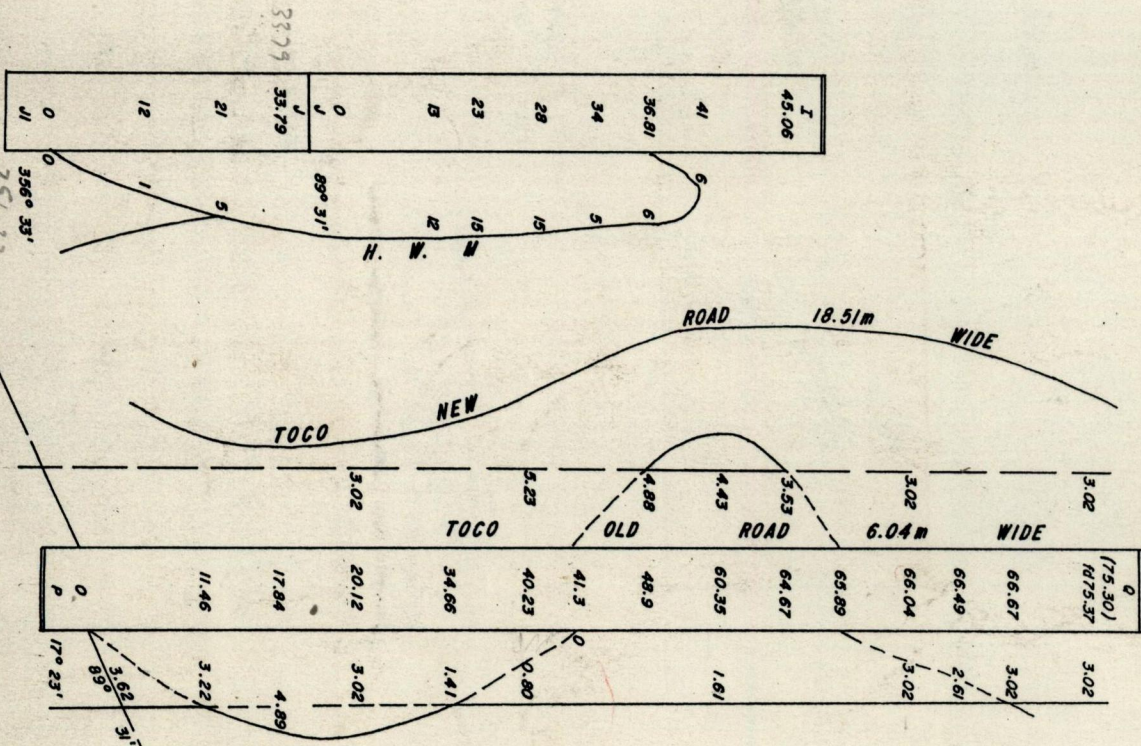
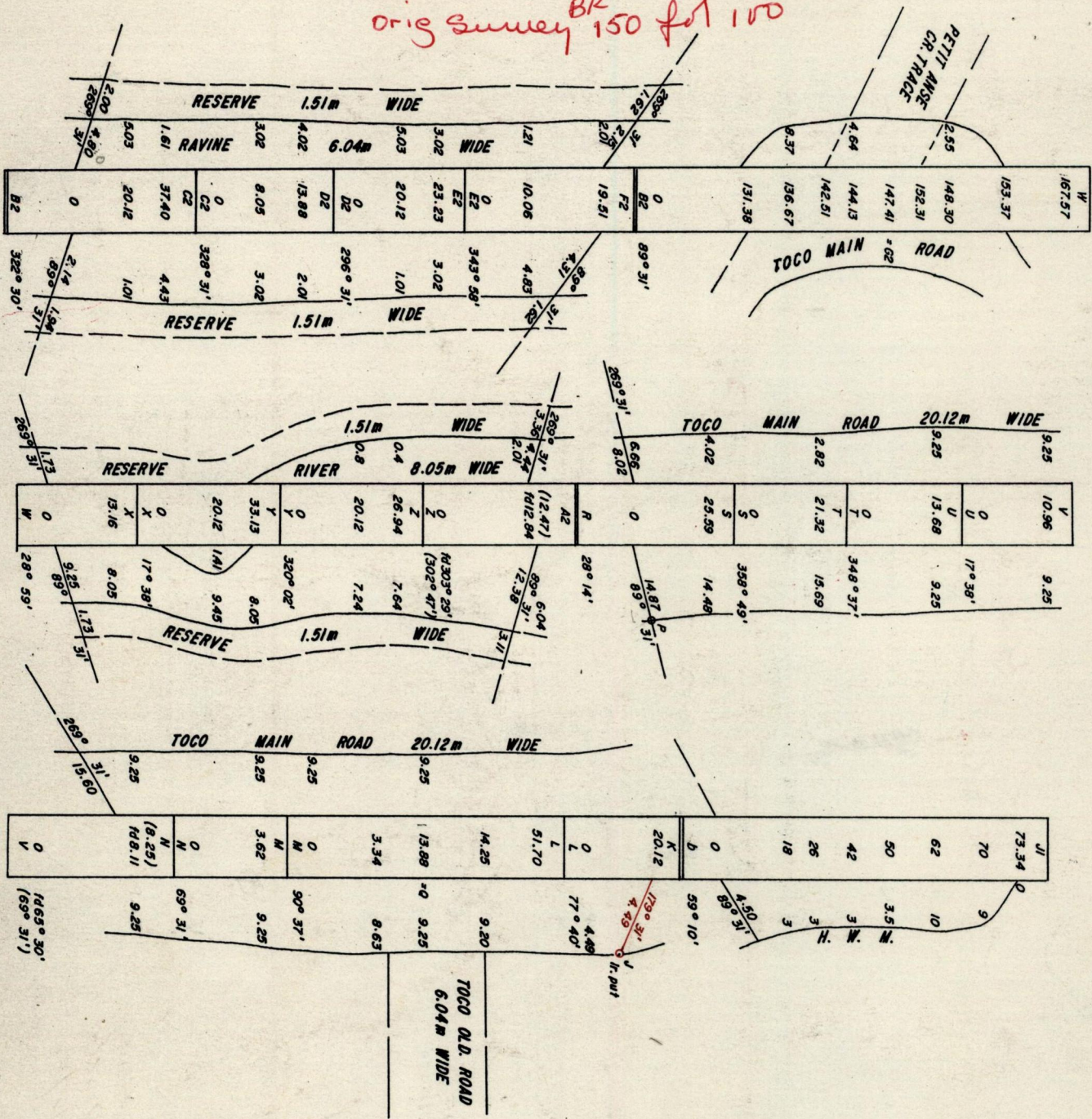
I certify that I have complied with rule 76 under section 14(2)(d) of the
Land Surveyors Ordinance 1952 and that this plan is correct.

Checked by *[Signature]*
Entered *[Signature]* Land Surveyor, Trinidad & Tobago. 25/5/95 19.

NOTE: LINE G2, H2, I2, J2 REPRESENTS CENTER LINE OF TRACE

G2 - H2	18°	41'	41.92
H2 - I2	356°	23'	15.09
I2 - J2	143/16° (316°)	11'	22.46 (22.53)

orig survey BK 150 fol 100



356 33

3379

023

820