

1052 Vol 2

812

L. & S.—54

1153

112

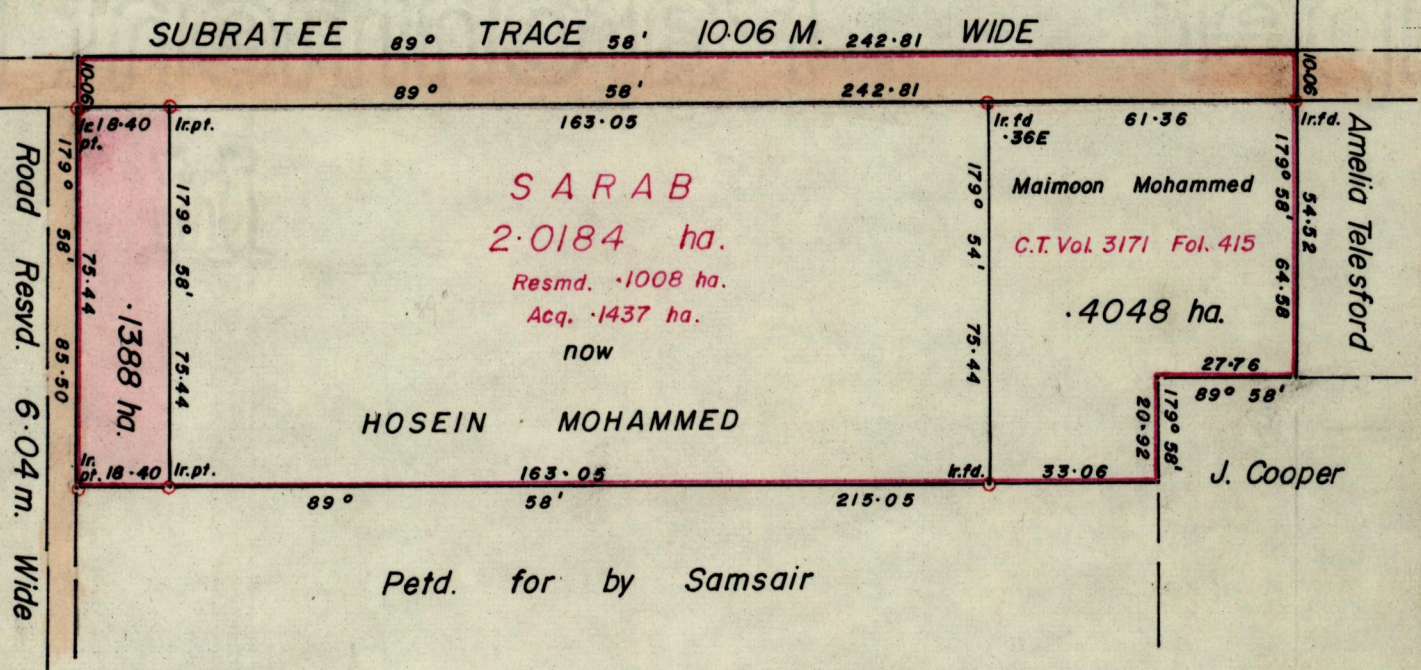
R.P.O. Vol. 423
C.T. Vol.

Fol. 225
Fol.

Ward of Savana Grande.
County of Victoria.
Cadastral Sheet G. 14. D.
64. E.
1/a.

GN
CASINI

Backtoolah



Approved

Frank Cole
Director of Surveys
90-10-22

SCALE 1:1500.

Note: To obtain compass bearings add/~~subtract~~ 2 minutes Distances are in metres.

PLAN of a Parcel of land coloured pink in the Ward of Savana Grande.
Containing point one three eight eight hectare.
Surveyed by me, with due authority, in February 1990.

I certify that I have complied with rule 76 under section 14(2)(d) of the
Land Surveyors' Ordinance 1952, and that this plan is correct.

Checked by *F. Ramcharan*
17/10/90

S. Ramcharan
Land Surveyor, Trinidad & Tobago
30/3/1990

Entered