

1053

782
782

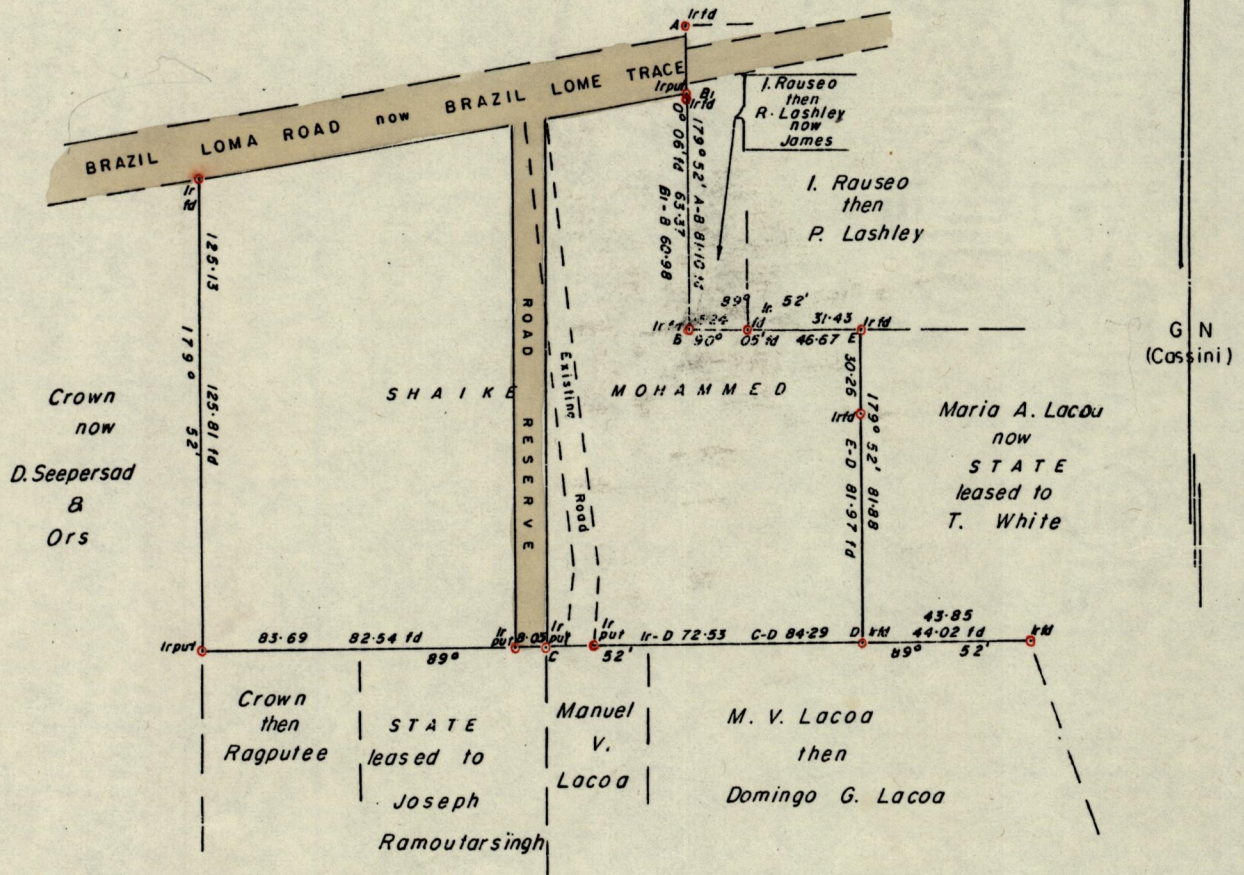
No 17000

R.P.O. Vol. 329
C.T. Vol. 3208

Fol. 151
Fol. 33

Ward of San Rafael
County of St George
Cadastral Sheet D.5.E.81

24 F
4/c



Approved

Alonso Kelly
Director of Surveys
88.04.26

SCALE 1:2000

Note: To obtain compass bearings add/subtract minutes Distances are in metres

PLAN showing certain Boundary lines in the Ward of San Rafael

Redefined by me, with due authority, in January 1988 for Shaik Mohammed
I certify that I have complied with rule 76 under section 14(2)(d) of the
Land Surveyors' Ordinance 1952, and that this plan is correct.

Checked by *25/2/88*

Entered

J. P. Gardner
Land Surveyor, Trinidad 11/2/1988