

No 23006

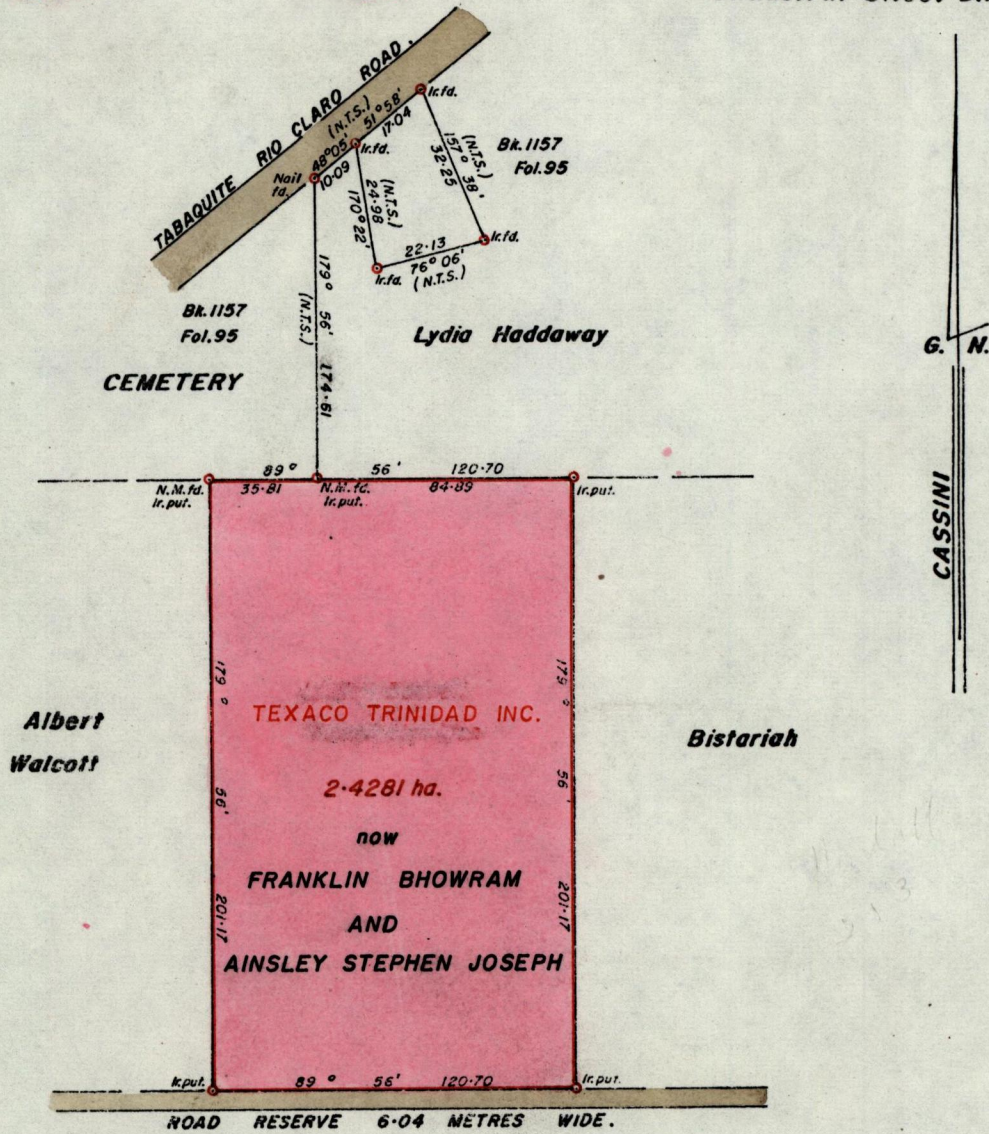
1053

730

R.P.O. Vol. 8  
C.T. Vol. 2443

Fol. 139  
Fol 273

Ward of **Montserrat**  
County of **Caroni**  
Cadastral Sheet **D.19.L 44F**  
1/c



Approved

*Alonso Philis*  
Director of Surveys  
88.04.26

SCALE 1/2500

Note: To obtain compass bearings add/subtract minutes Distances are in Metres

PLAN of a Parcel of land coloured pink in the Ward of **Montserrat**  
Containing two point four two eight one hectares.

Surveyed by me, with due authority, in **December, 1987**

I certify that I have complied with rule 76 under section 14(2)(d) of the  
Land Surveyors' Ordinance 1952, and that this plan is correct.

Checked by *[Signature]* 25/1/88

Entered ..... Land Surveyor, Trinidad *[Signature]* 29<sup>th</sup> January 1988