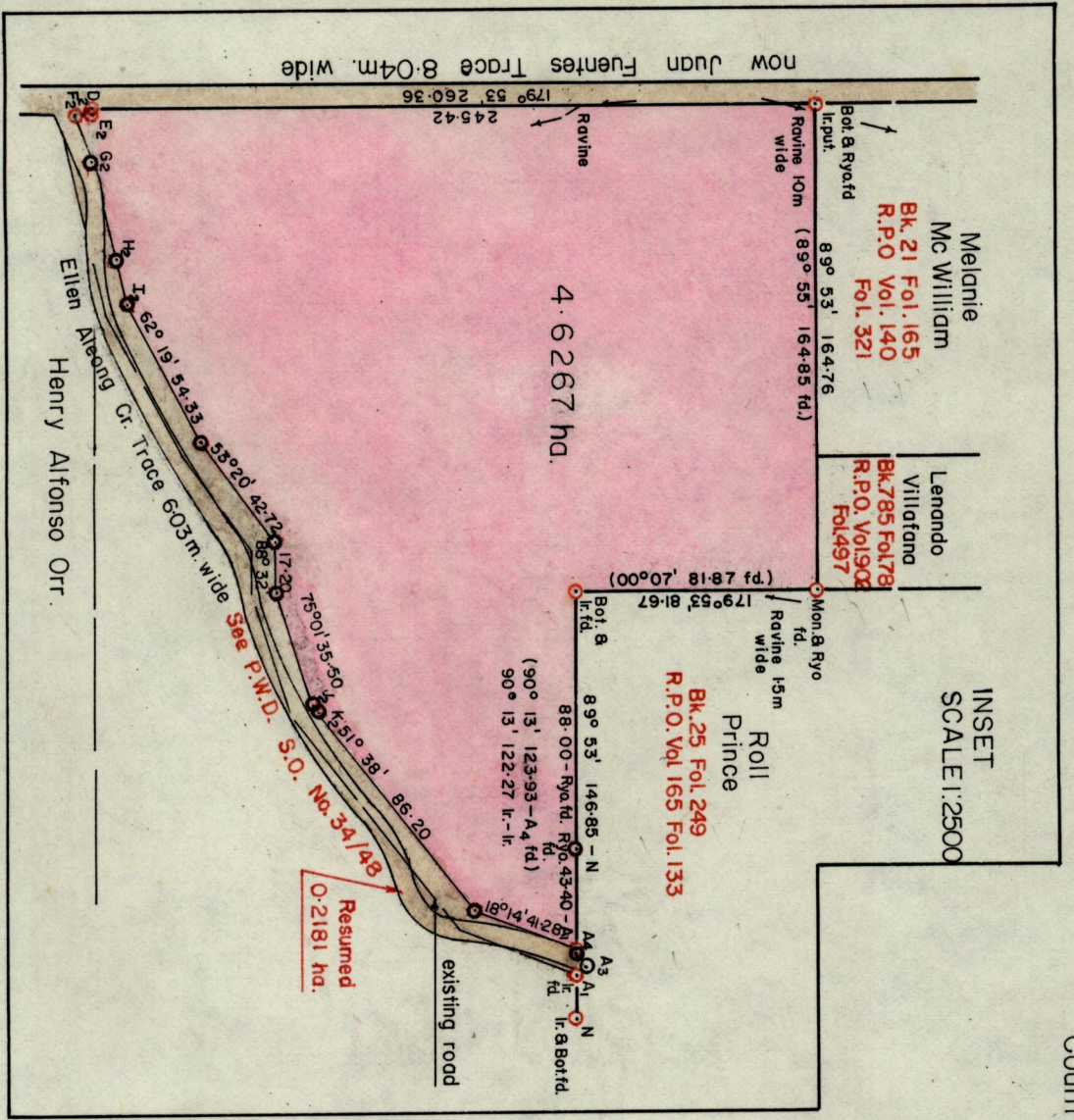
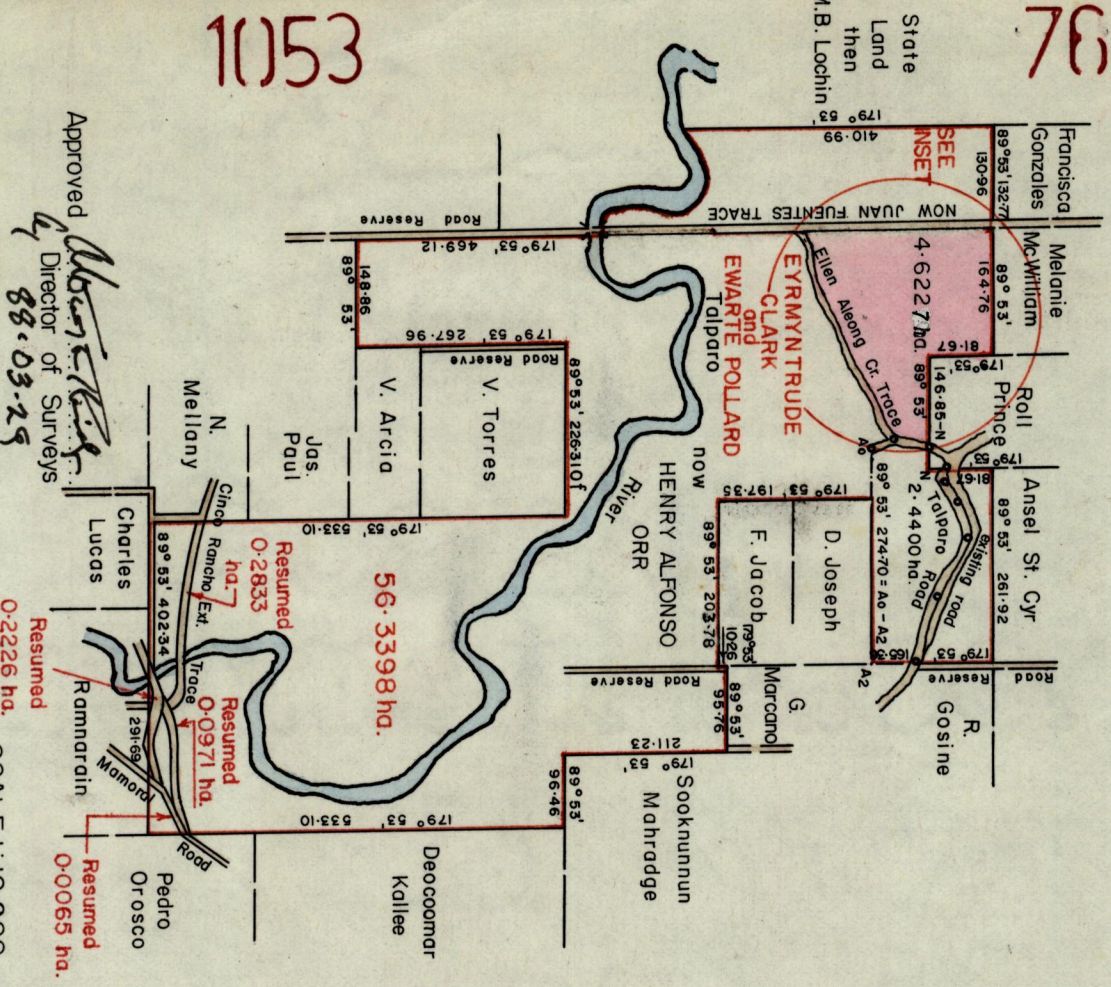


760

1053



Legend

N - A <sub>1</sub>	270°05'	15.91
A <sub>1</sub> - A <sub>3</sub>	323°27'	3.23
A <sub>3</sub> - A <sub>4</sub>	250°31'	7.68
D <sub>2</sub> - E <sub>2</sub>	89°53'	2.01
E <sub>2</sub> - F <sub>2</sub>	179°53'	13.90
F <sub>2</sub> - G <sub>2</sub>	62°26'	22.58
G <sub>2</sub> - H <sub>2</sub>	76°12'	34.54
H <sub>2</sub> - I <sub>2</sub>	76°59'	16.13
I <sub>2</sub> - K <sub>2</sub>	53°13'	3.06

To obtain compass bearings add 7 minutes.

Distances are in METRES

○ Denotes iron put unless otherwise stated.

Plan of a parcel of land coloured pink in the Ward of San Rafael  
Containing four point six two six seven hectares.

Surveyed by me, with due authority, in July 1986, for Woolcombe Harris.

I certify that I have complied with rule 76 under section 14(2) (d) of the Land Surveyor's Ordinance 1952, and that this plan is correct.

Checked by *SA 23/3/88*

*Arthur Boyd*

Entered on ...

Land Surveyor, Trinidad 12<sup>th</sup> August 1986

Approved  
*Alfonso Orr*  
Director of Surveys  
88-03-29

SCALE 1:10 000

INSET  
SCALE 1:2500

GN (Cassini)

160