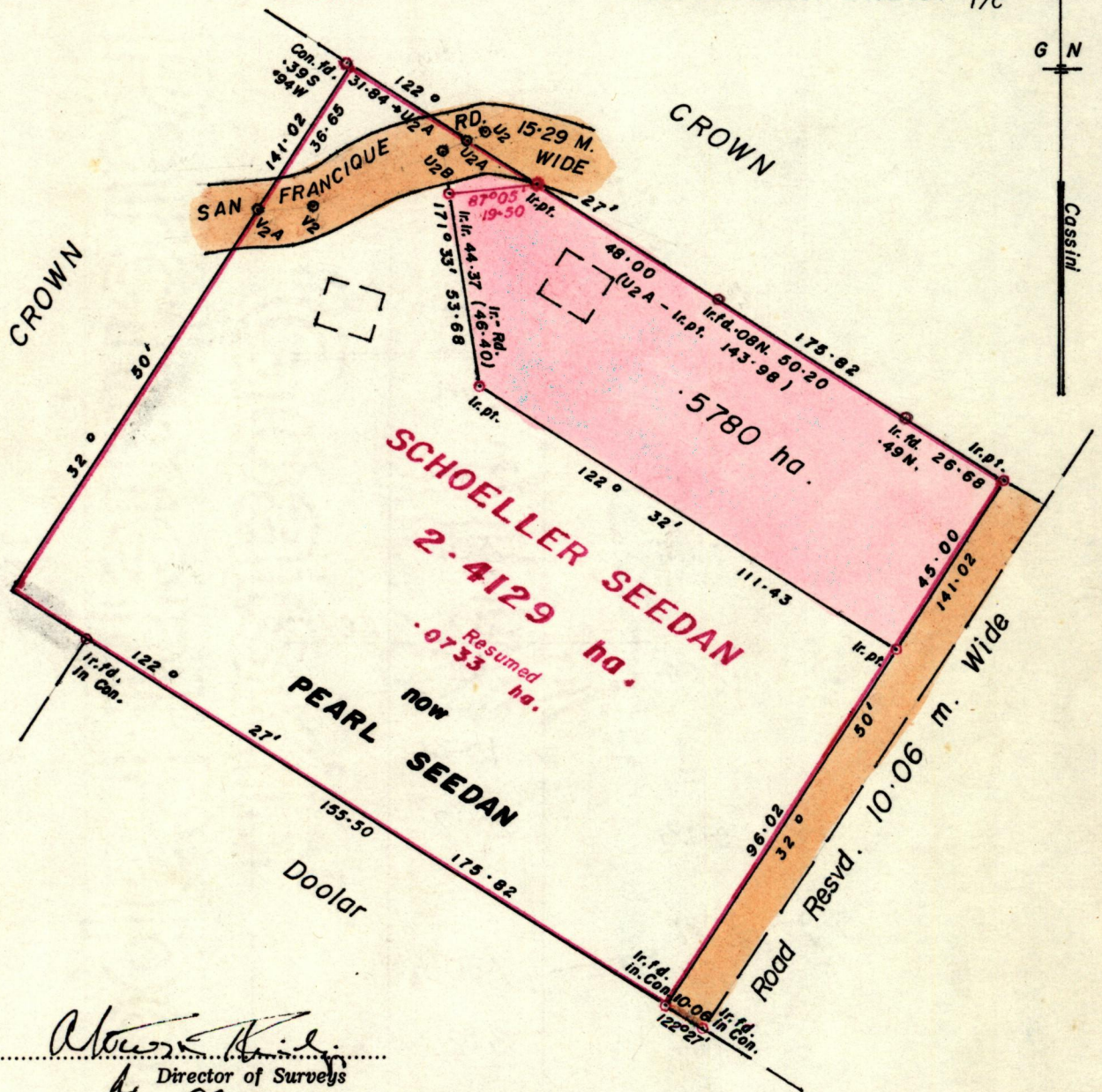


No 19504

R.P.O. Vol. 81
C.T. Vol. 1859

Fol. 137
Fol. 213

Ward of Siparia.
County of St. Patrick.
Cadastral Sheet G.12.G. $\frac{63E}{1/C}$



Approved

Alvina K. ...
 Director of Surveys
 88.03.14

SCALE 1:1500 . SEE BACK OF PLAN

Note: To obtain compass bearings ~~add~~/subtract 5 minutes Distances are in metres .

PLAN of a Parcel of land coloured pink in the Ward of Siparia .
Containing point five seven eight zero hectare .

Surveyed by me, with due authority, in Oct. 1986 .

I certify that I have complied with rule 76 under section 14(2)(d) of the
Land Surveyors' Ordinance 1952, and that this plan is correct.

Checked by *GR 11/3/88*

Calliecharam

Entered

Land Surveyor, Trinidad *12/12/1986*

Original Survey Bk 465 Vol. 73

